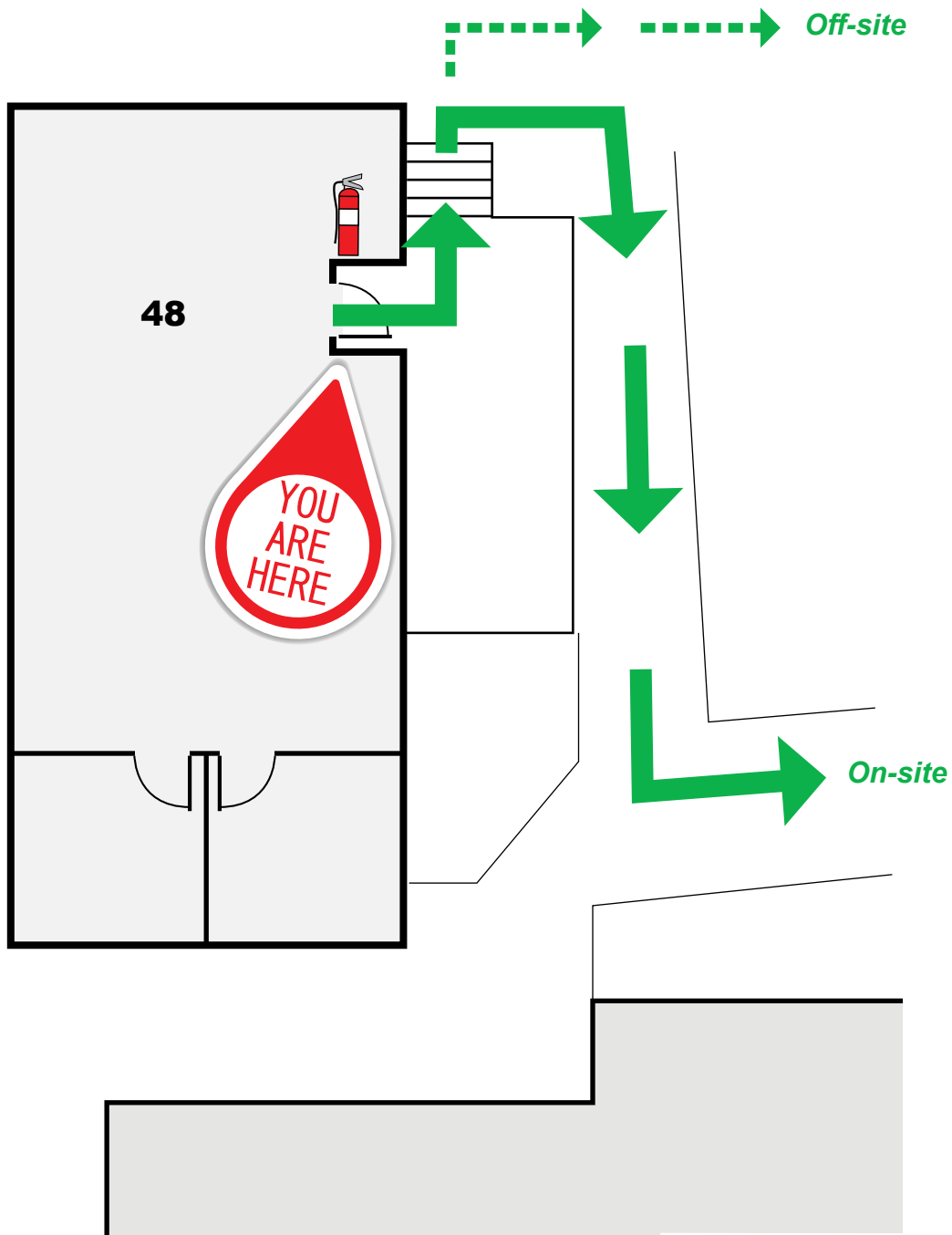


EVACUATION DIAGRAM

MUSIC ROOM



TEMPLETON
MELBOURNE, AUSTRALIA

TEMPLETON PRIMARY SCHOOL
1 CRESTDALE RD, WANTIRNA 3152



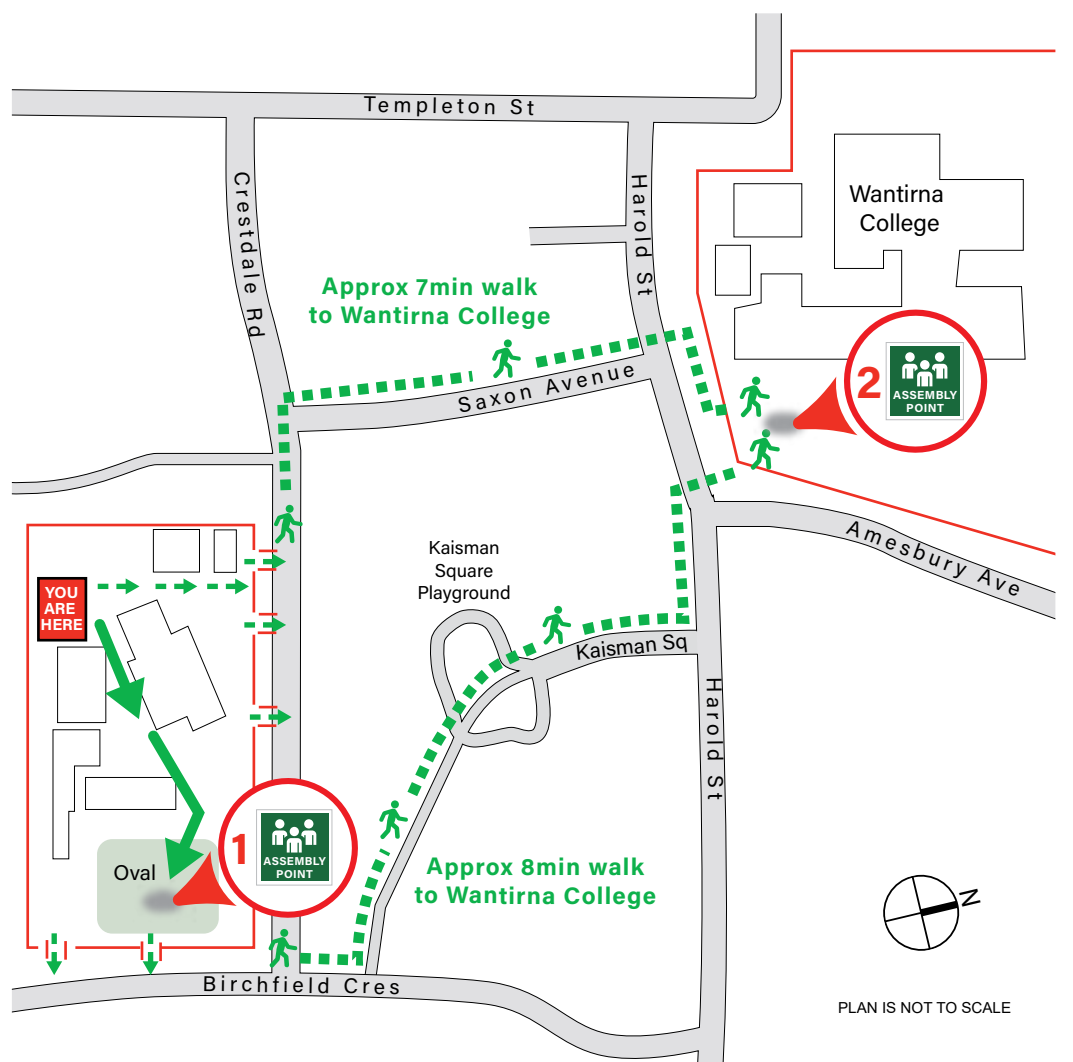
- 1 PRIMARY ASSEMBLY POINT**
(On-site) - School Oval
- 2 SECONDARY ASSEMBLY POINT**
(Off-site) - Wantirna College

EVACUATION PROCEDURES

1. When the alert to Evacuate sounds, leave immediately by the nearest exit. Assist any person/s in immediate danger *(if safe to do so)*.
2. Proceed in an orderly manner to Assembly Point.
3. Remain at assembly point until all occupants are accounted for. Do not leave until the all-clear is given.

BLOCK C

ASSEMBLY AREAS

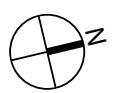


FIRE MARSHALL
FIRE PROTECTION CONSULTANTS
(03) 9775 0913

Date: FEB 2023
Valid until: FEB 2028

LEGEND

- | | | | |
|--|---------------------------|--|-----------------|
| | Dry Chemical Extinguisher | | Primary Route |
| | Hose reel | | Alternate Route |
| | First Aid Kit | | Emergency Exit |
| | | | Assembly Area |



PLAN IS NOT TO SCALE