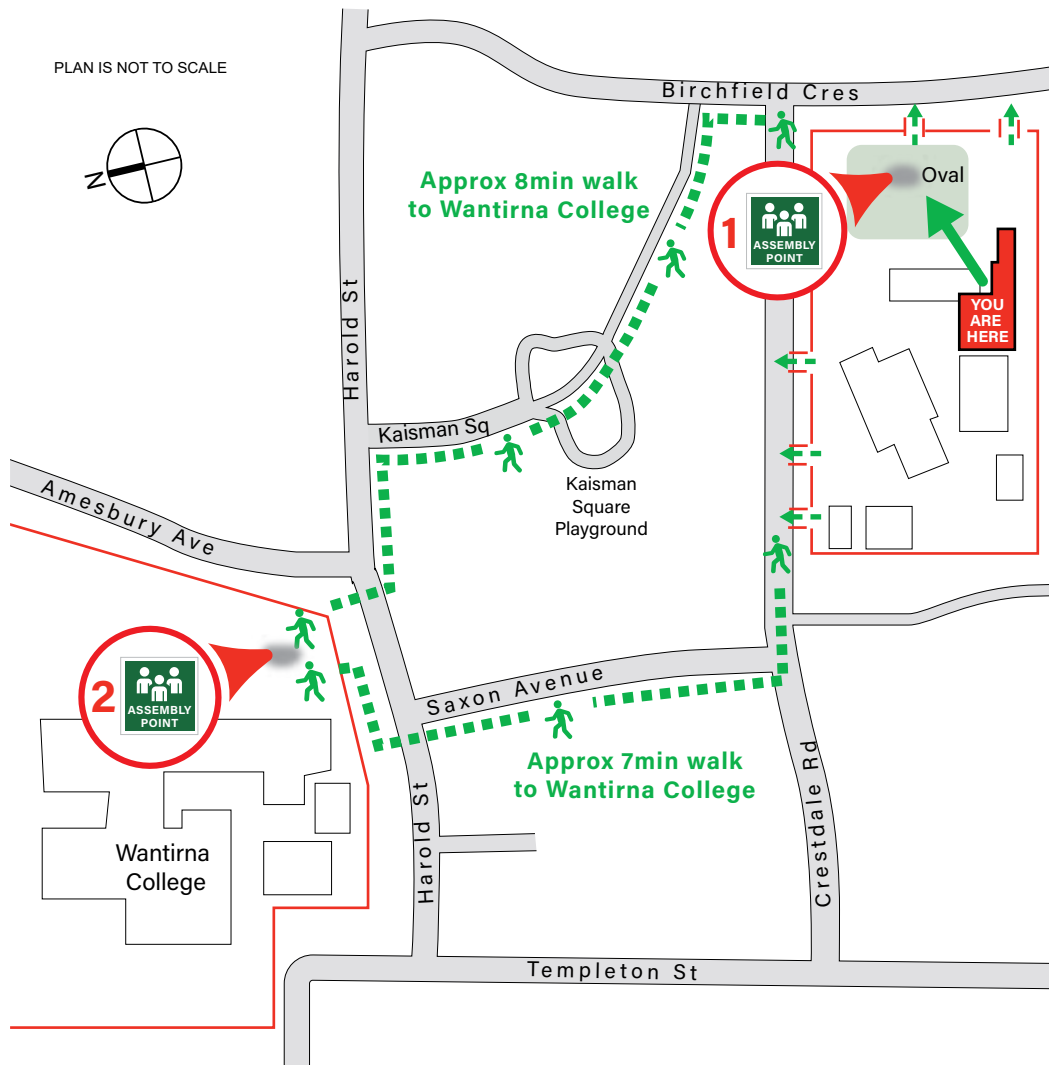


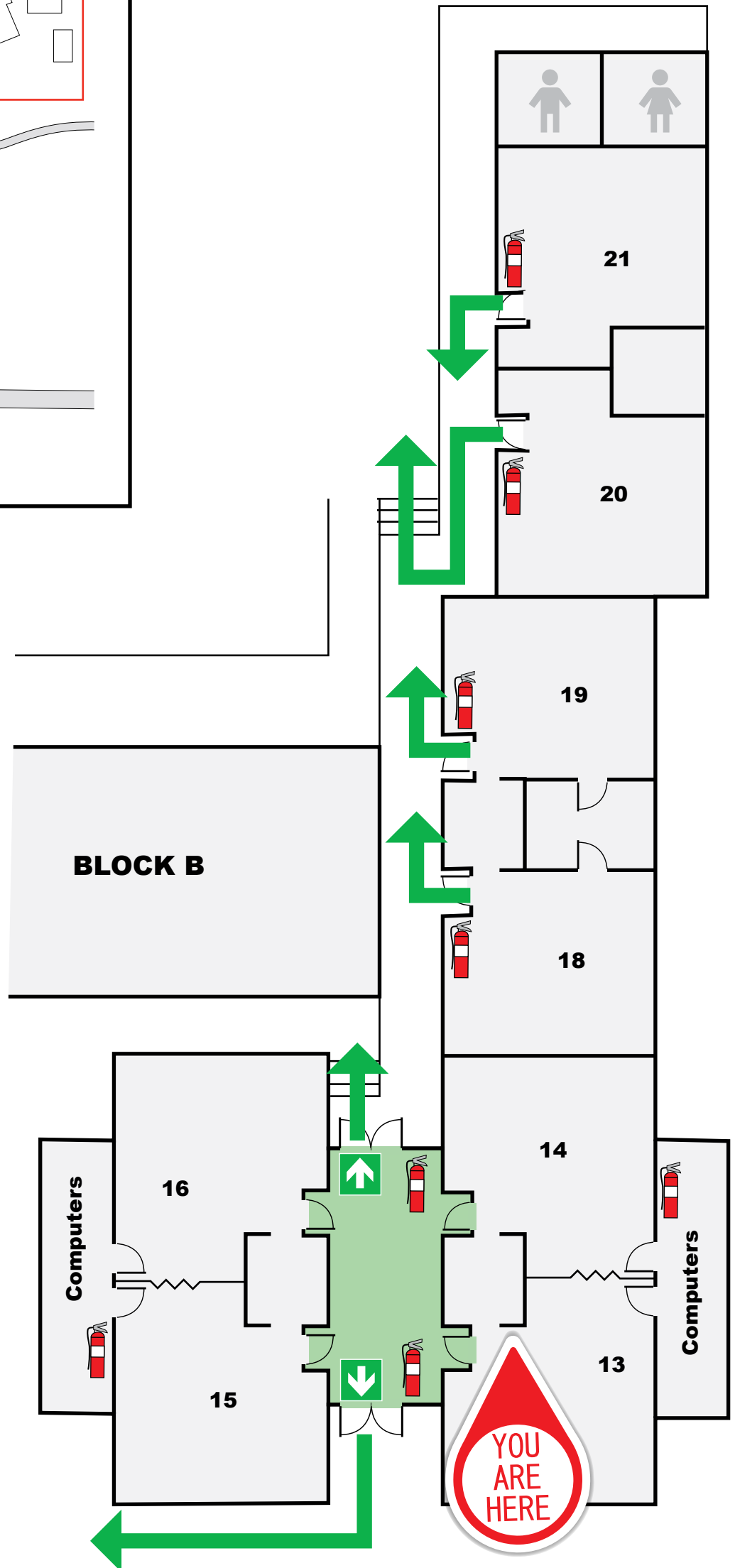
# EVACUATION DIAGRAM

## ASSEMBLY AREAS



TEMPLETON PRIMARY SCHOOL  
1 CRESDALE RD, WANTIRNA 3152

## BLOCK E



- 1 PRIMARY ASSEMBLY POINT**  
(On-site) - School Oval
- 2 SECONDARY ASSEMBLY POINT**  
(Off-site) - Wantirna College

## EVACUATION PROCEDURE

- When the alert to Evacuate sounds, leave immediately by the nearest exit. Assist any person/s in immediate danger *(if safe to do so)*.
- Proceed in an orderly manner to Assembly Point.
- Remain at assembly point until all occupants are accounted for. Do not leave until the all-clear is given.

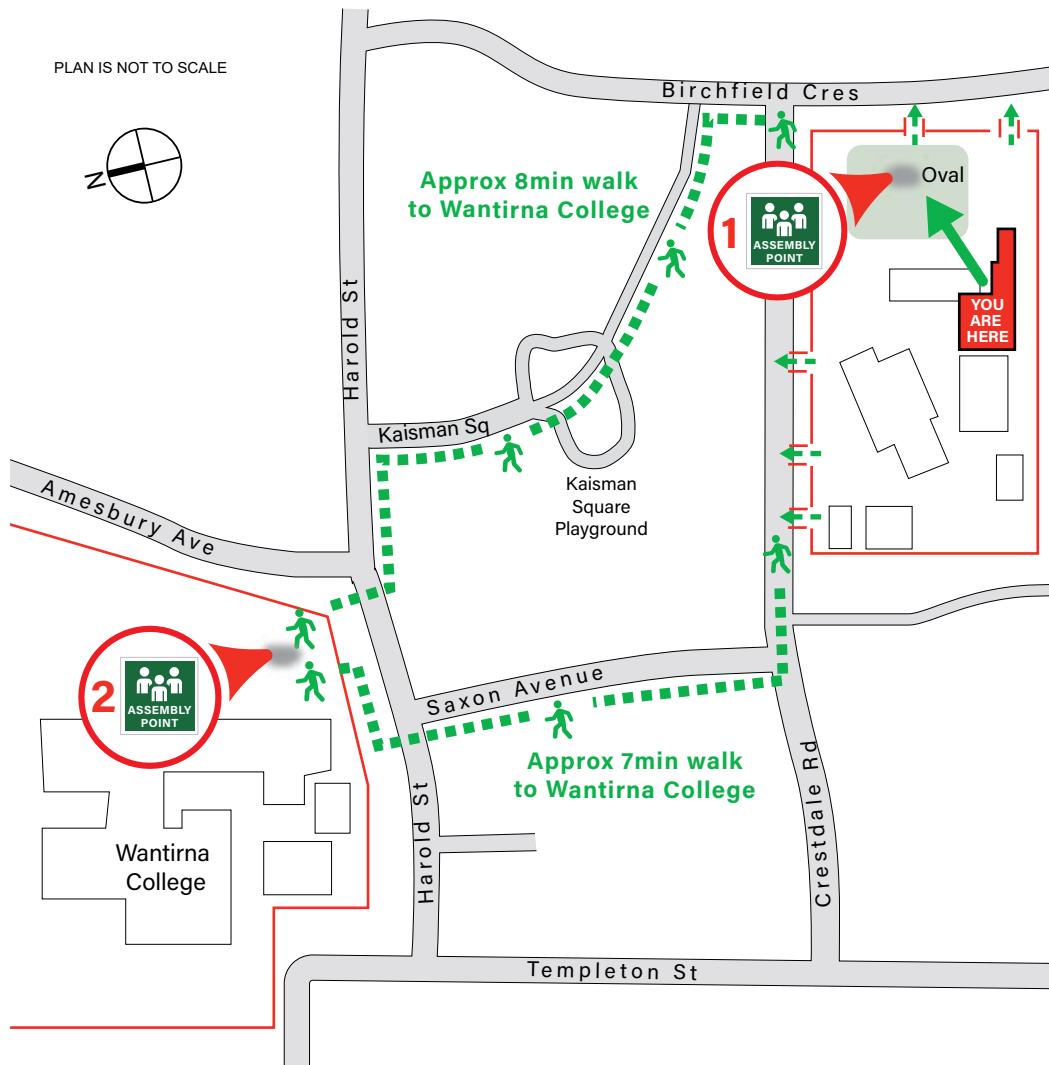
### LEGEND

- Dry Chemical Extinguisher
- Hose reel
- First Aid Kit
- Primary Route
- Alternate Route
- Emergency Exit
- Assembly Area

**FIRE MARSHALL**  
FIRE PROTECTION CONSULTANTS  
(03) 9775 0913  
Date: FEB 2023  
Valid until: FEB 2028

# EVACUATION DIAGRAM

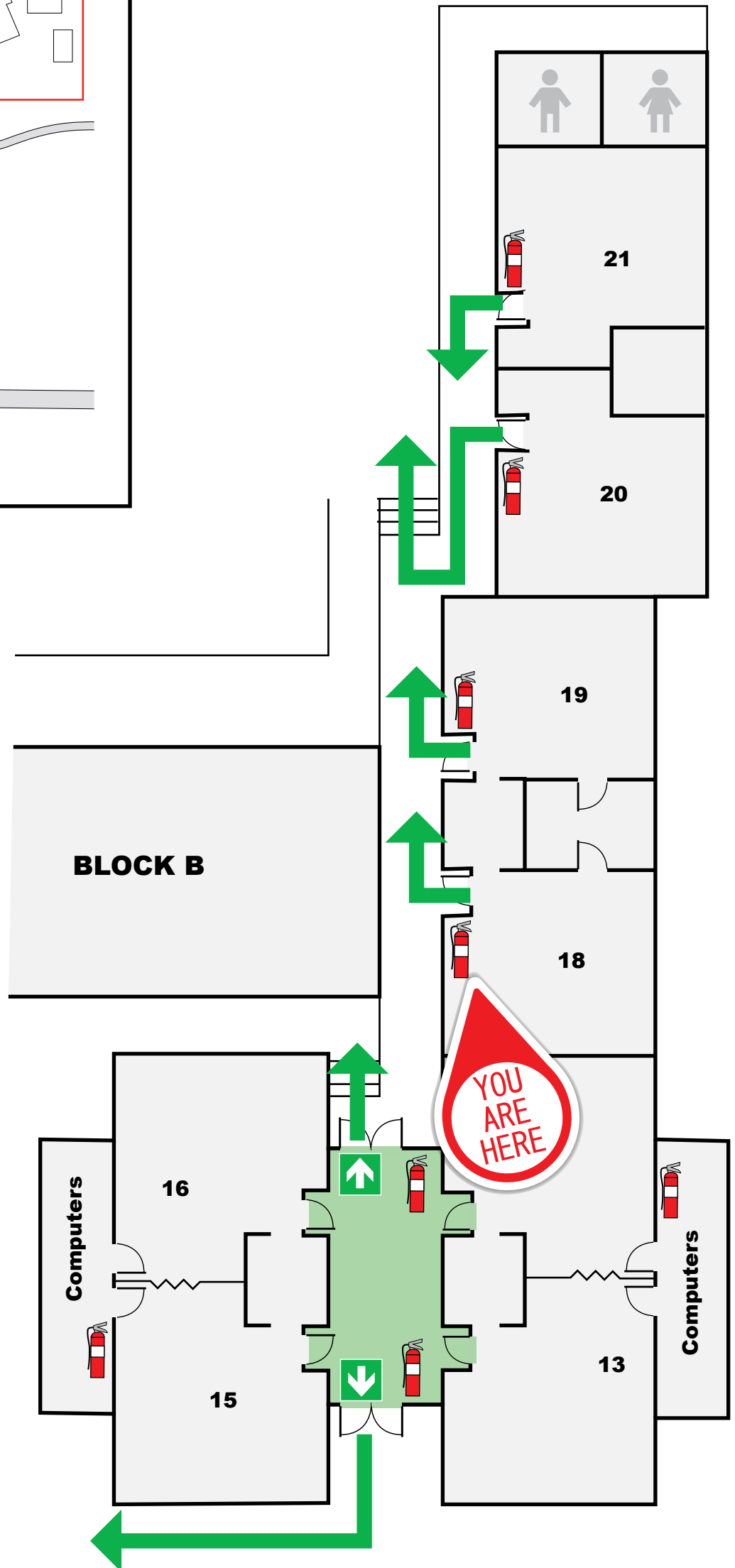
## ASSEMBLY AREAS



**TEMPLETON**  
MELBOURNE, AUSTRALIA

TEMPLETON PRIMARY SCHOOL  
1 CRESTDALE RD, WANTIRNA 3152

## BLOCK E



- 1 PRIMARY ASSEMBLY POINT**  
(On-site) - School Oval
- 2 SECONDARY ASSEMBLY POINT**  
(Off-site) - Wantirna College

## EVACUATION PROCEDURE

1. When the alert to Evacuate sounds, leave immediately by the nearest exit. Assist any person/s in immediate danger (if safe to do so).
2. Proceed in an orderly manner to Assembly Point.
3. Remain at assembly point until all occupants are accounted for. Do not leave until the all-clear is given.

### LEGEND

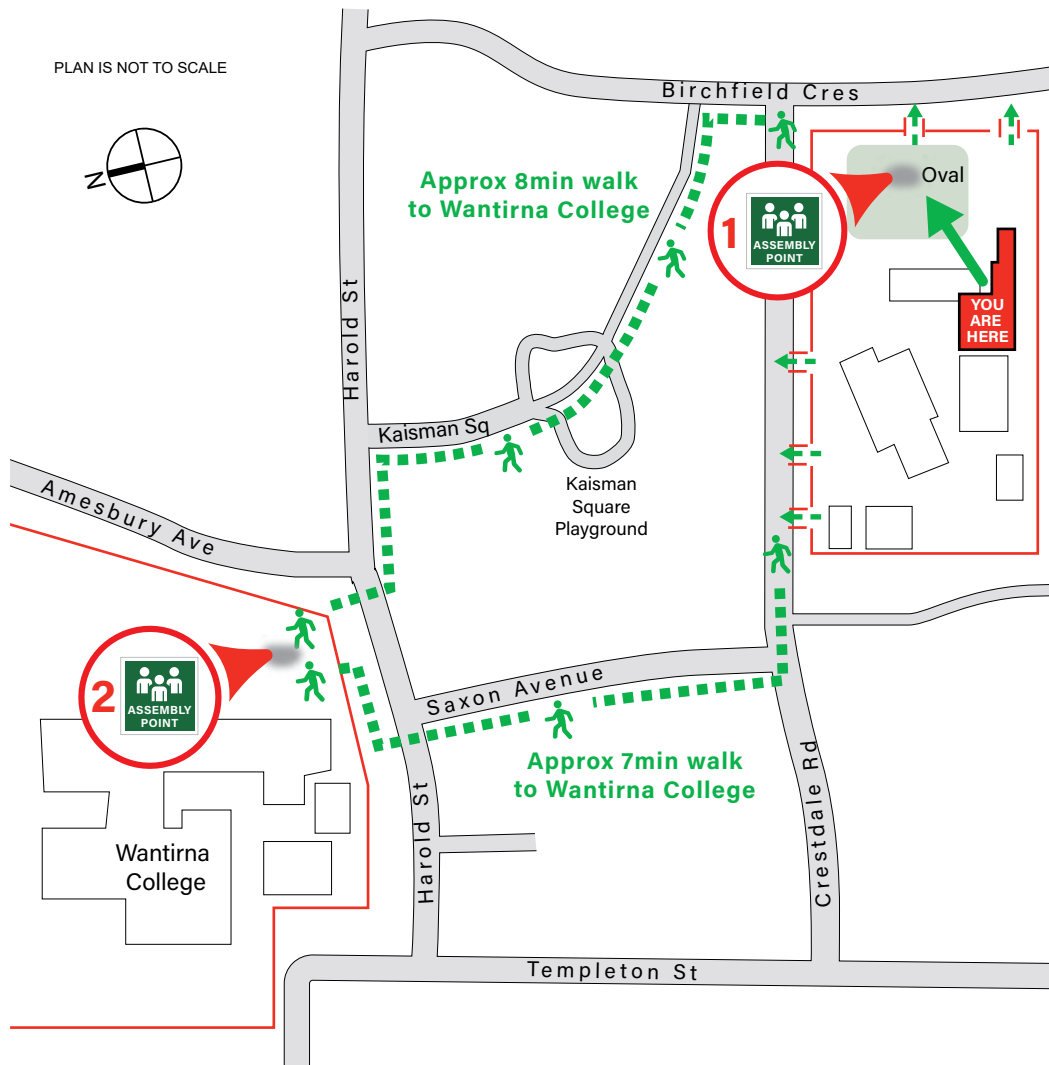
- Dry Chemical Extinguisher
- Hose reel
- First Aid Kit
- Primary Route
- Alternate Route
- Emergency Exit
- Assembly Area

**FIRE MARSHALL**  
FIRE PROTECTION CONSULTANTS  
(03) 9775 0913

Date: FEB 2023  
Valid until: FEB 2028

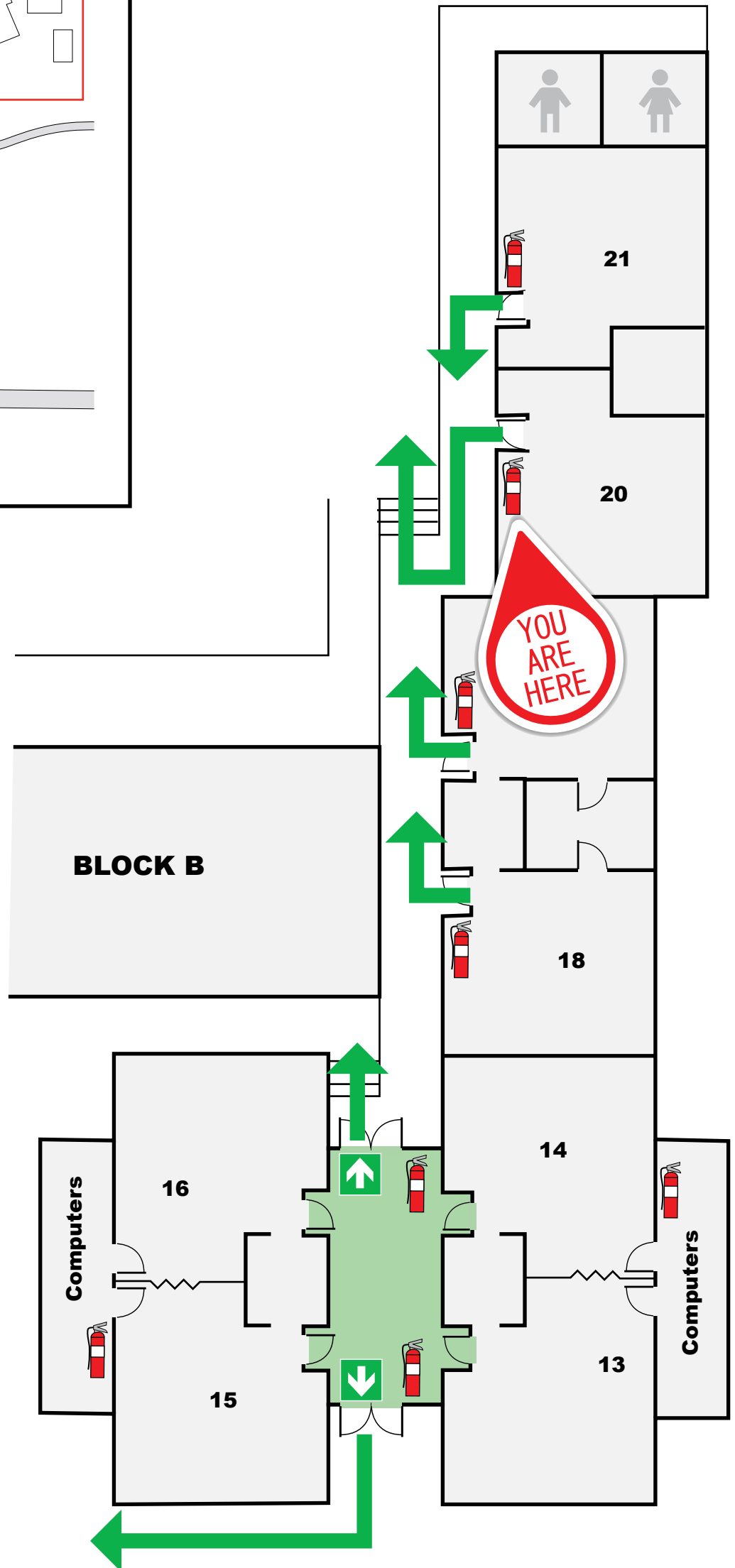
# EVACUATION DIAGRAM

## ASSEMBLY AREAS



TEMPLETON PRIMARY SCHOOL  
1 CRESDALE RD, WANTIRNA 3152

## BLOCK E



- 1 PRIMARY ASSEMBLY POINT**  
(On-site) - School Oval
- 2 SECONDARY ASSEMBLY POINT**  
(Off-site) - Wantirna College

## EVACUATION PROCEDURE

1. When the alert to Evacuate sounds, leave immediately by the nearest exit. Assist any person/s in immediate danger (if safe to do so).
2. Proceed in an orderly manner to Assembly Point.
3. Remain at assembly point until all occupants are accounted for. Do not leave until the all-clear is given.

### LEGEND

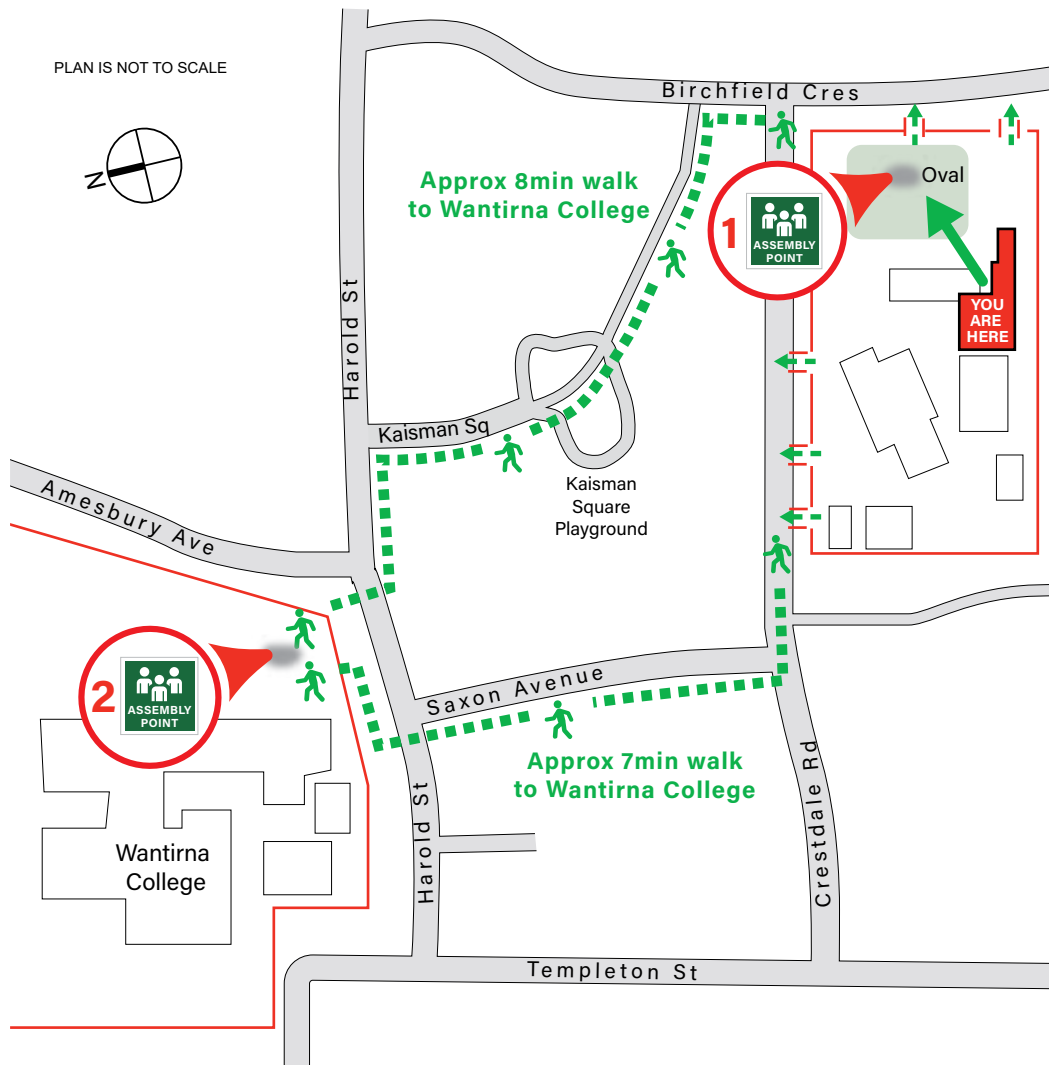
- Dry Chemical Extinguisher
- Hose reel
- First Aid Kit
- Primary Route
- Alternate Route
- Emergency Exit
- Assembly Area



Date: FEB 2023  
Valid until: FEB 2028

# EVACUATION DIAGRAM

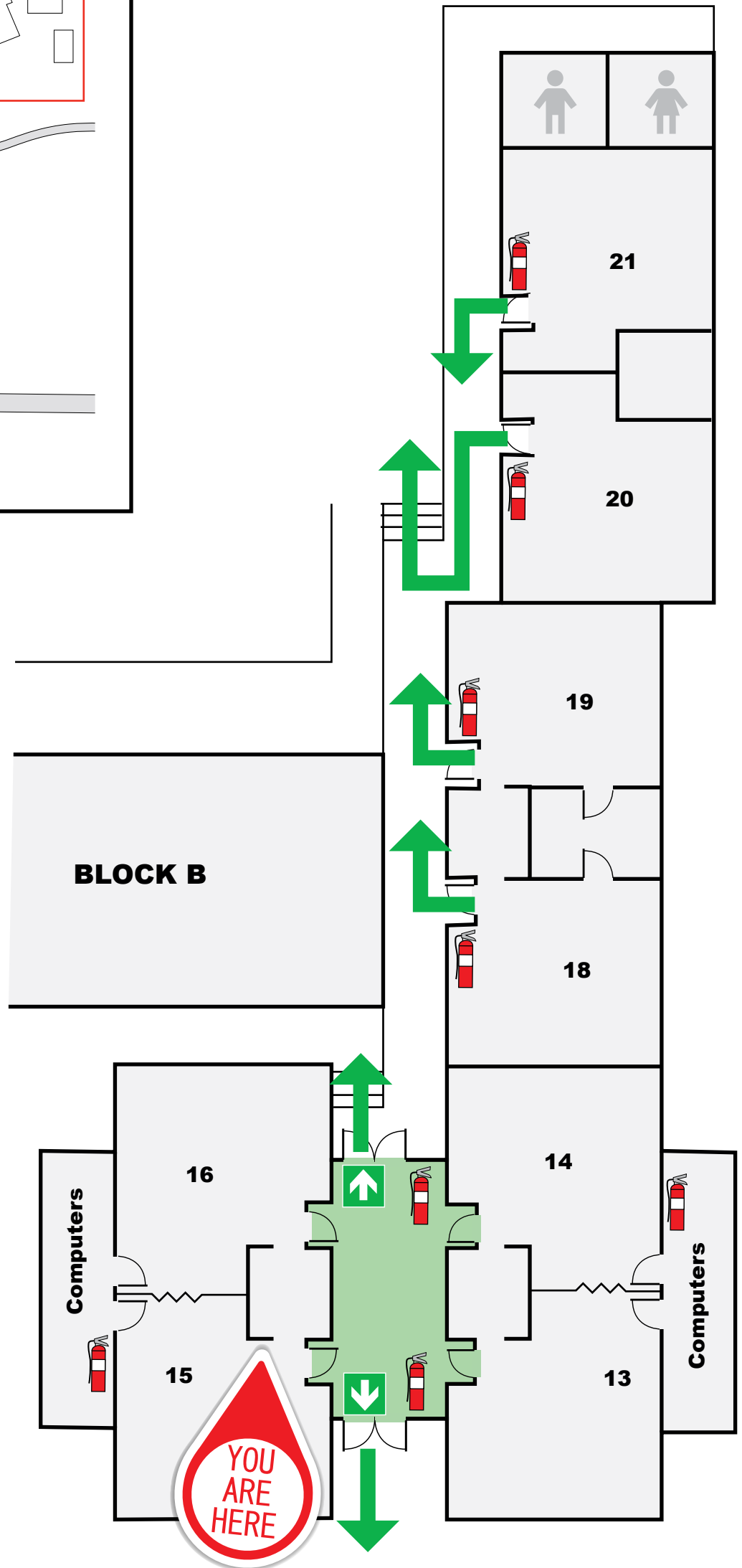
## ASSEMBLY AREAS



**TEMPLETON**  
MELBOURNE, AUSTRALIA

TEMPLETON PRIMARY SCHOOL  
1 CRESTDALE RD, WANTIRNA 3152

## BLOCK E



- 1 PRIMARY ASSEMBLY POINT**  
(On-site) - School Oval
- 2 SECONDARY ASSEMBLY POINT**  
(Off-site) - Wantirna College

## EVACUATION PROCEDURE

1. When the alert to Evacuate sounds, leave immediately by the nearest exit. Assist any person/s in immediate danger *(if safe to do so)*.
2. Proceed in an orderly manner to Assembly Point.
3. Remain at assembly point until all occupants are accounted for. Do not leave until the all-clear is given.

### LEGEND

- Dry Chemical Extinguisher
- Hose reel
- First Aid Kit
- Primary Route
- Alternate Route
- Emergency Exit
- Assembly Area

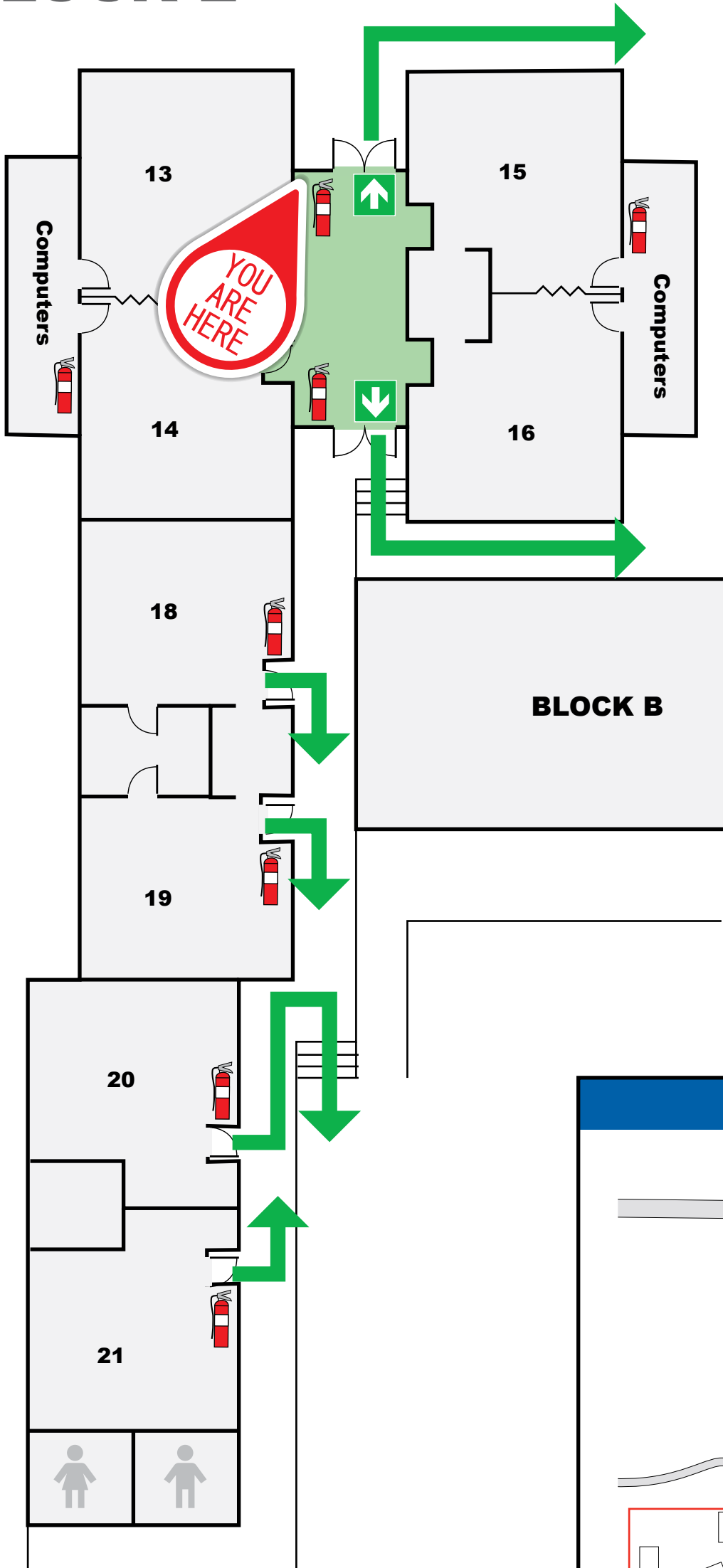


**FIRE MARSHALL**  
FIRE PROTECTION CONSULTANTS  
(03) 9775 0913

Date: FEB 2023  
Valid until: FEB 2028

# EVACUATION DIAGRAM

## BLOCK E



**TEMPLETON**  
MELBOURNE, AUSTRALIA

TEMPLETON PRIMARY SCHOOL  
1 CRESTDALE RD, WANTIRNA 3152

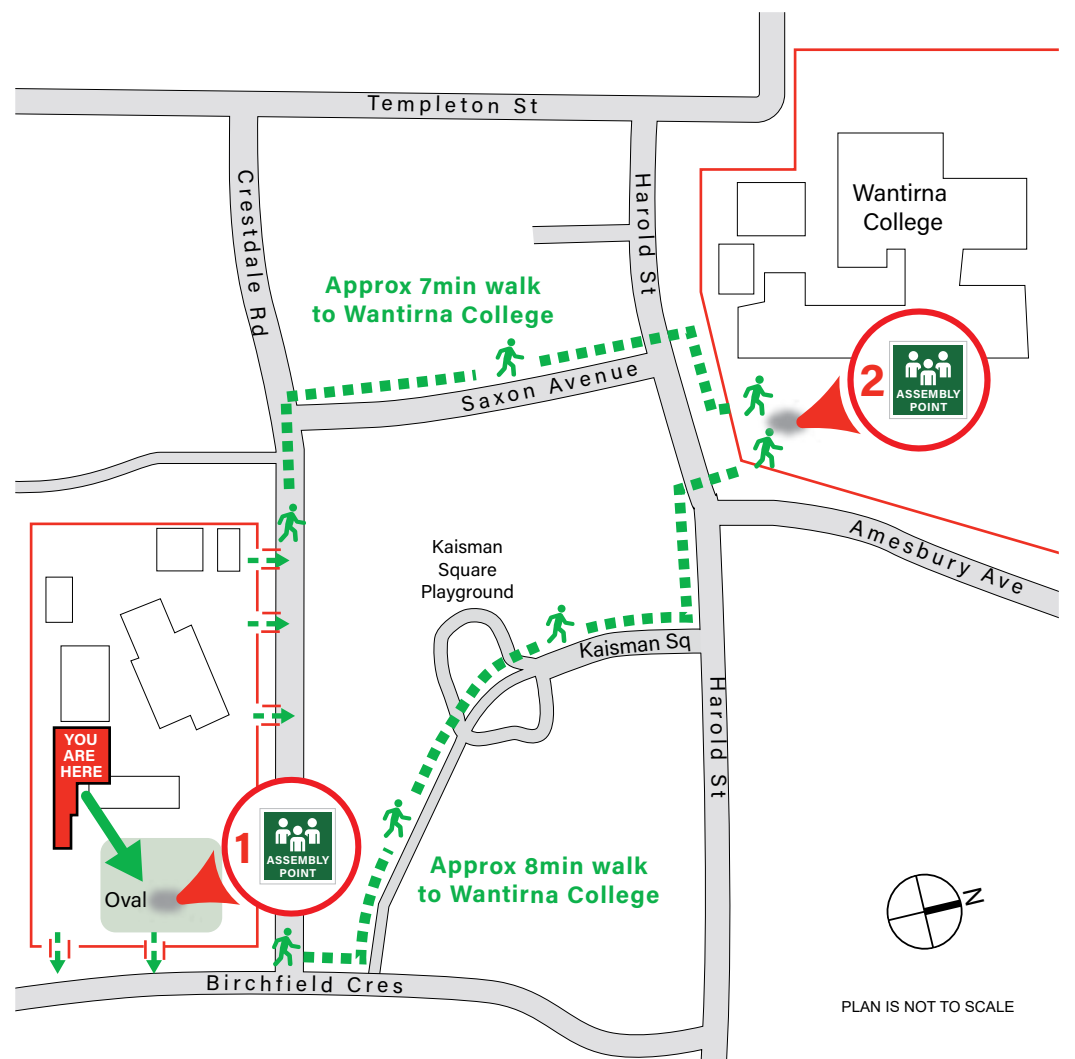


- 1 PRIMARY ASSEMBLY POINT**  
(On-site) - School Oval
- 2 SECONDARY ASSEMBLY POINT**  
(Off-site) - Wantirna College

## EVACUATION PROCEDURES

1. When the alert to Evacuate sounds, leave immediately by the nearest exit. Assist any person/s in immediate danger *(if safe to do so)*.
2. Proceed in an orderly manner to Assembly Point.
3. Remain at assembly point until all occupants are accounted for. Do not leave until the all-clear is given.

## ASSEMBLY AREAS



**FIRE MARSHALL**  
FIRE PROTECTION CONSULTANTS  
(03) 9775 0913

Date: FEB 2023  
Valid until: FEB 2028

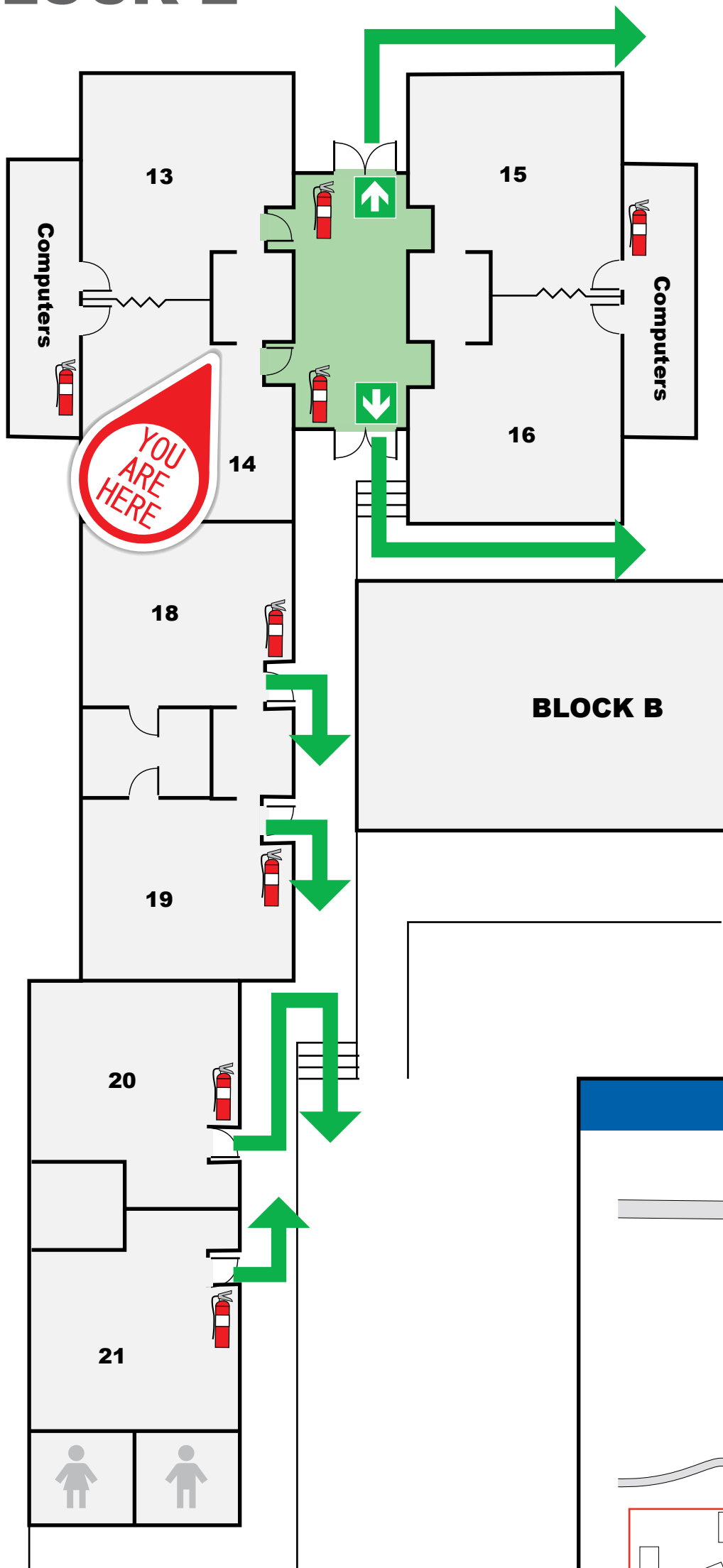
### LEGEND

- |  |                           |  |                 |
|--|---------------------------|--|-----------------|
|  | Dry Chemical Extinguisher |  | Primary Route   |
|  | Hose reel                 |  | Alternate Route |
|  | First Aid Kit             |  | Emergency Exit  |
|  |                           |  | Assembly Area   |

PLAN IS NOT TO SCALE

# EVACUATION DIAGRAM

## BLOCK E



**TEMPLETON**  
MELBOURNE, AUSTRALIA

TEMPLETON PRIMARY SCHOOL  
1 CRESTDALE RD, WANTIRNA 3152

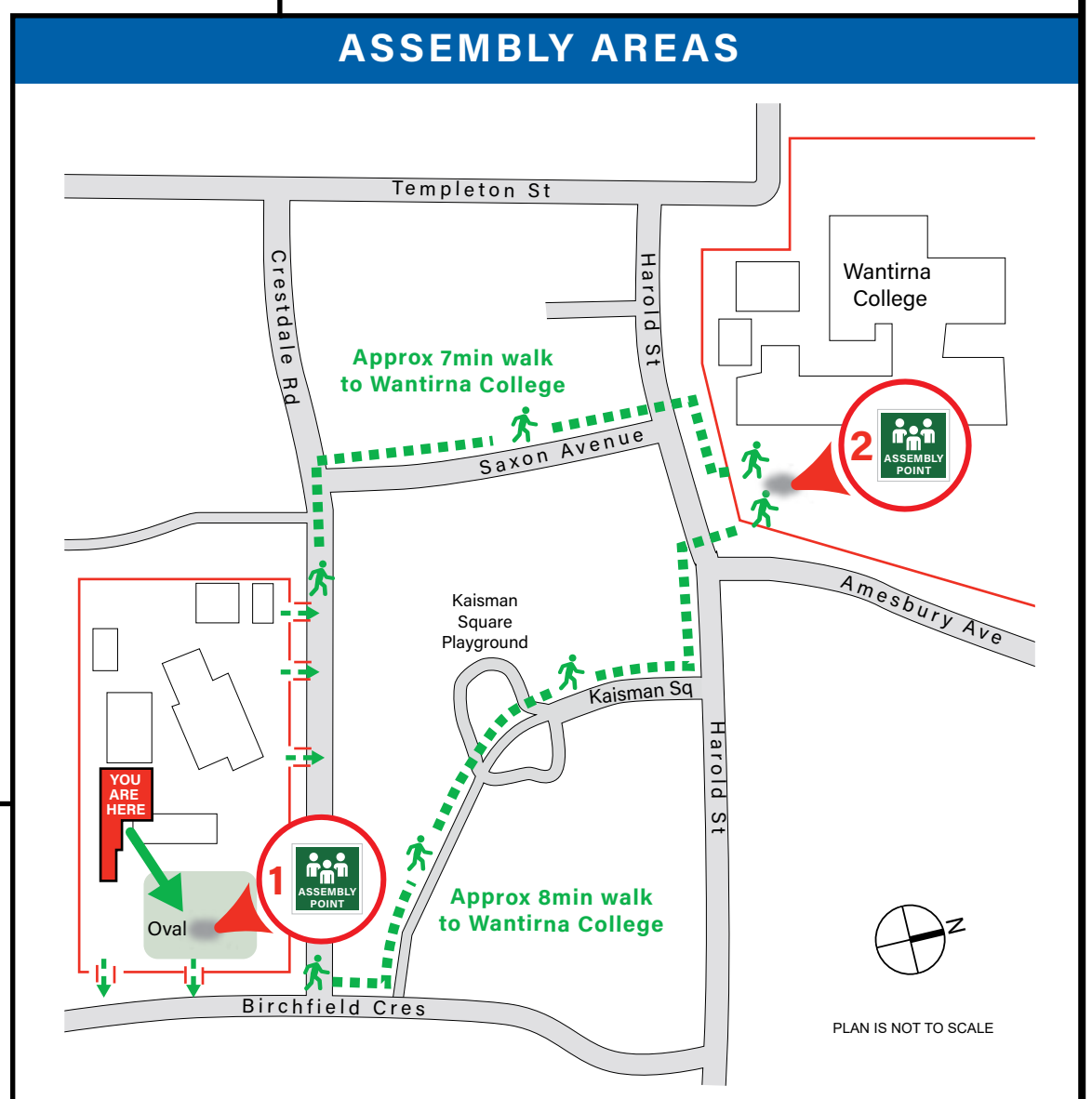


- 1 PRIMARY ASSEMBLY POINT**  
(On-site) - School Oval
- 2 SECONDARY ASSEMBLY POINT**  
(Off-site) - Wantirna College

### EVACUATION PROCEDURES

1. When the alert to Evacuate sounds, leave immediately by the nearest exit. Assist any person/s in immediate danger *(if safe to do so)*.
2. Proceed in an orderly manner to Assembly Point.
3. Remain at assembly point until all occupants are accounted for. Do not leave until the all-clear is given.

### ASSEMBLY AREAS



**FIRE MARSHALL**  
FIRE PROTECTION CONSULTANTS  
(03) 9775 0913

Date: FEB 2023  
Valid until: FEB 2028

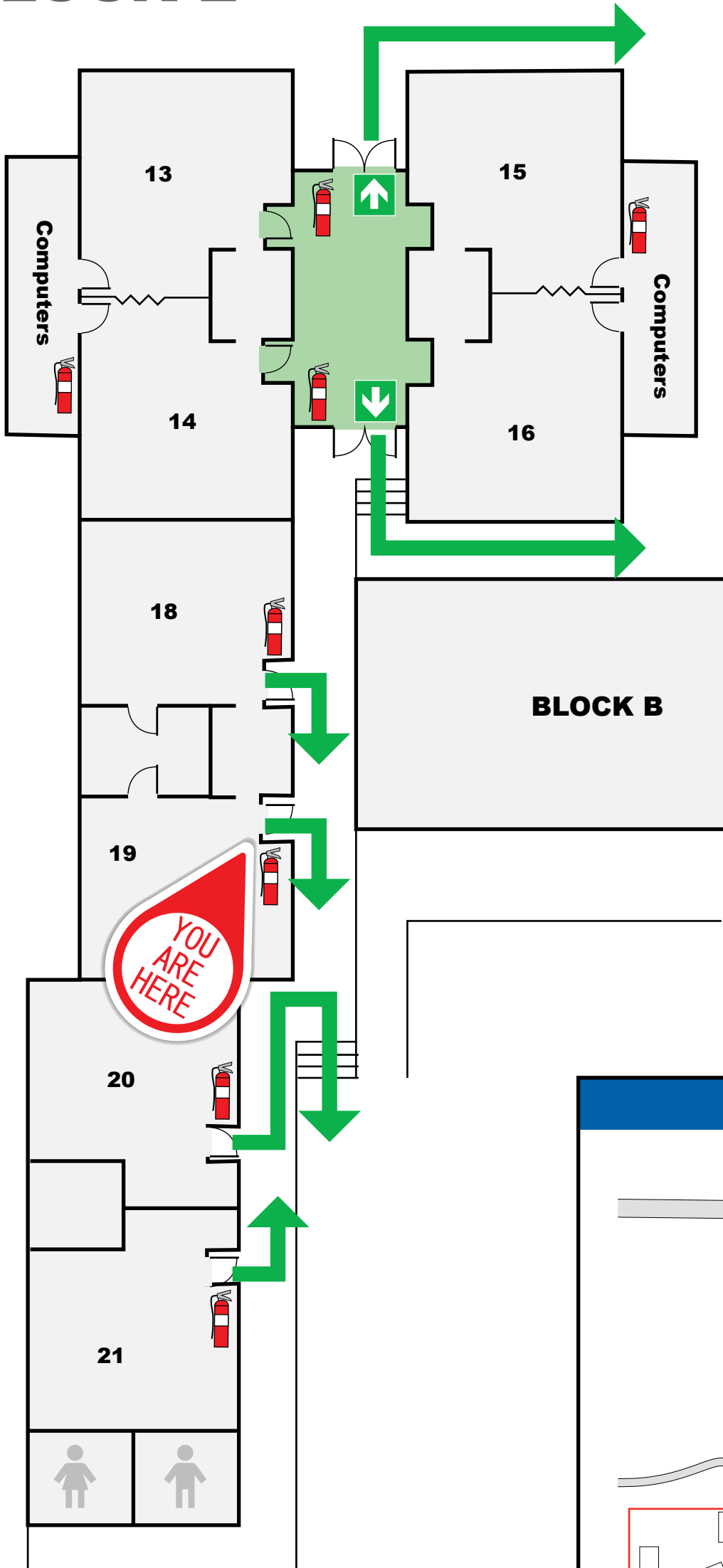
#### LEGEND

- |  |                           |  |                 |
|--|---------------------------|--|-----------------|
|  | Dry Chemical Extinguisher |  | Primary Route   |
|  | Hose reel                 |  | Alternate Route |
|  | First Aid Kit             |  | Emergency Exit  |
|  |                           |  | Assembly Area   |



# EVACUATION DIAGRAM

## BLOCK E



**TEMPLETON**  
MELBOURNE, AUSTRALIA

TEMPLETON PRIMARY SCHOOL  
1 CRESTDALE RD, WANTIRNA 3152

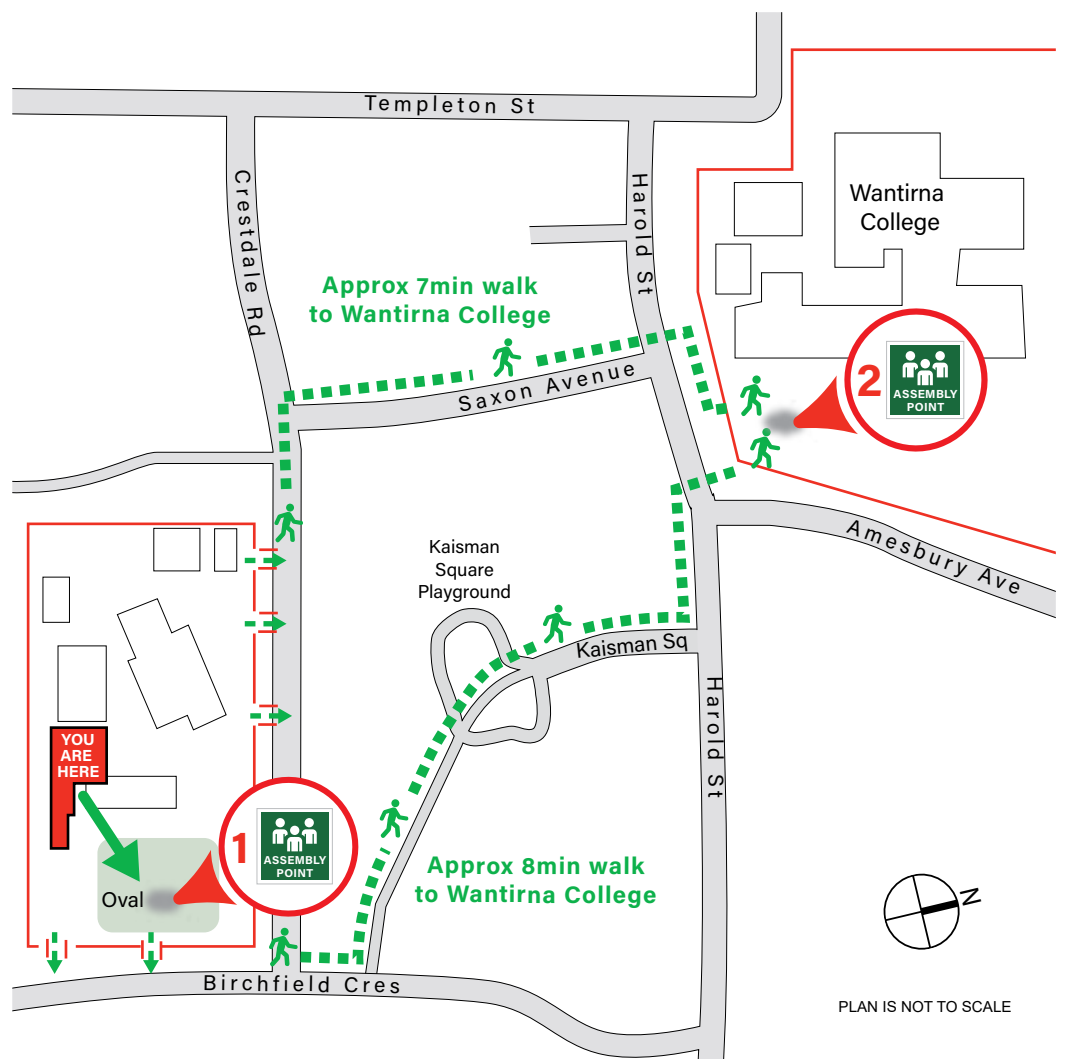


- 1 PRIMARY ASSEMBLY POINT**  
(On-site) - School Oval
- 2 SECONDARY ASSEMBLY POINT**  
(Off-site) - Wantirna College

## EVACUATION PROCEDURES

1. When the alert to Evacuate sounds, leave immediately by the nearest exit. Assist any person/s in immediate danger *(if safe to do so)*.
2. Proceed in an orderly manner to Assembly Point.
3. Remain at assembly point until all occupants are accounted for. Do not leave until the all-clear is given.

## ASSEMBLY AREAS



**FIRE MARSHALL**  
FIRE PROTECTION CONSULTANTS  
(03) 9775 0913

Date: FEB 2023  
Valid until: FEB 2028

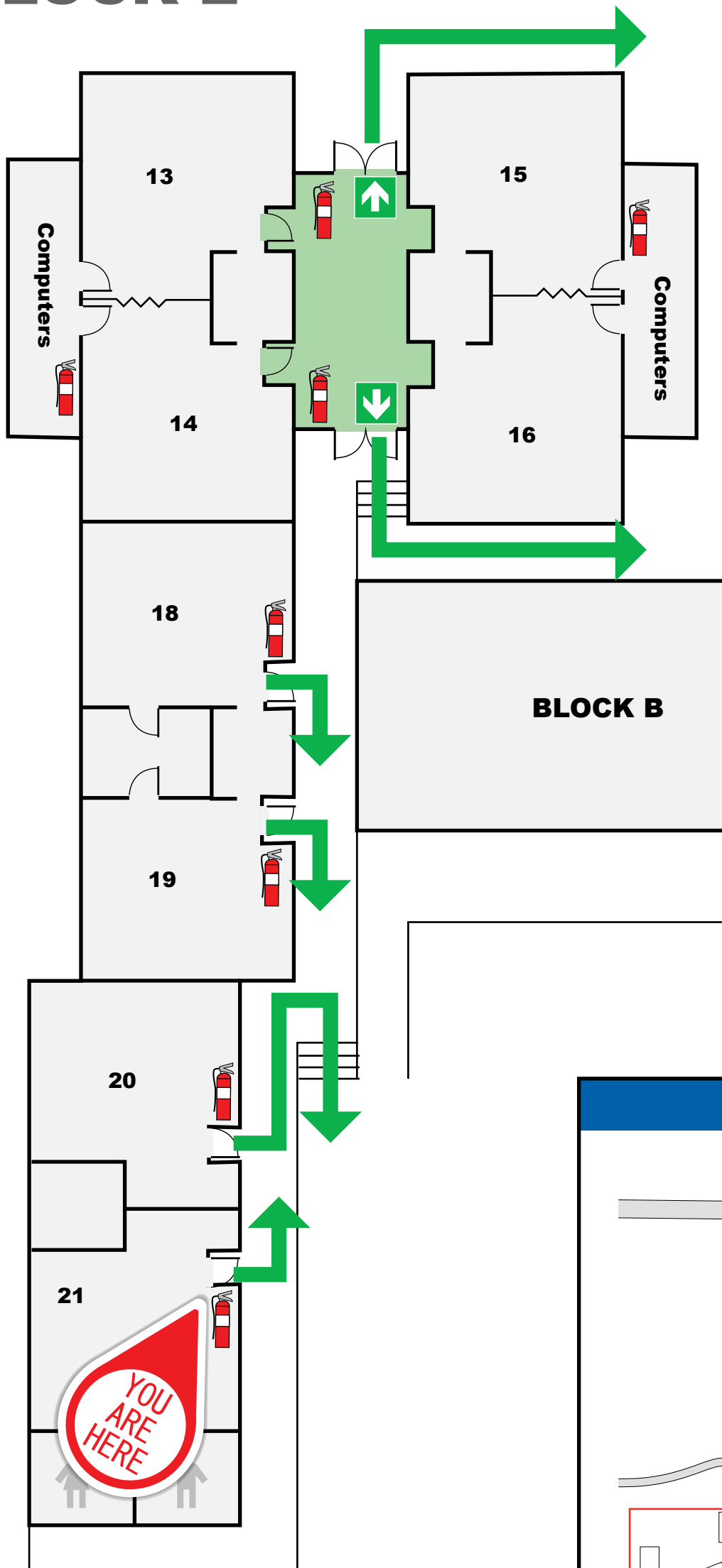
### LEGEND

- |  |                           |
|--|---------------------------|
|  | Primary Route             |
|  | Alternate Route           |
|  | Emergency Exit            |
|  | Assembly Area             |
|  | Dry Chemical Extinguisher |
|  | Hose reel                 |
|  | First Aid Kit             |

PLAN IS NOT TO SCALE

# EVACUATION DIAGRAM

## BLOCK E



**TEMPLETON**  
MELBOURNE, AUSTRALIA

TEMPLETON PRIMARY SCHOOL  
1 CRESTDALE RD, WANTIRNA 3152

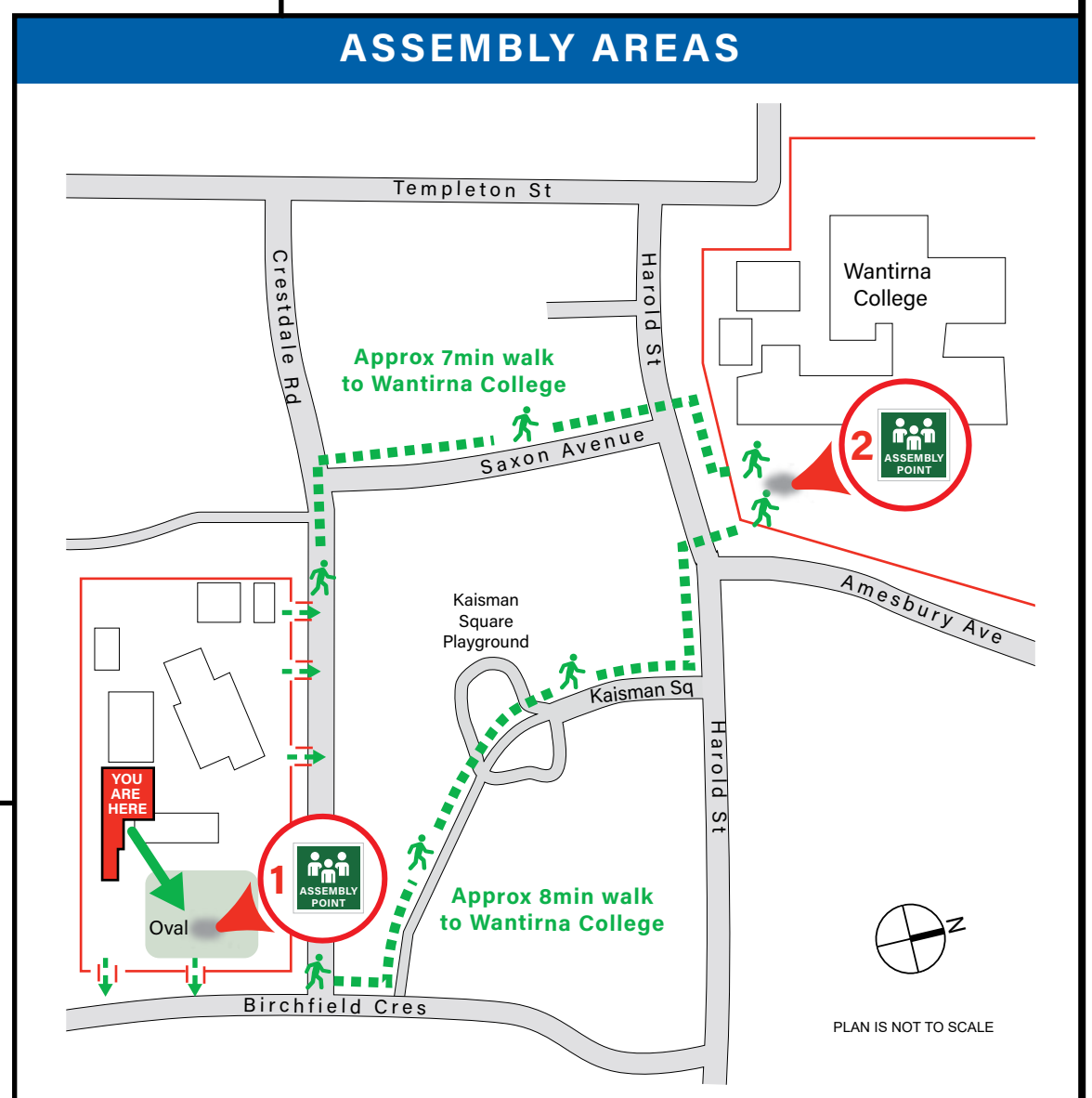


- 1 PRIMARY ASSEMBLY POINT**  
(On-site) - School Oval
- 2 SECONDARY ASSEMBLY POINT**  
(Off-site) - Wantirna College

## EVACUATION PROCEDURES

- When the alert to Evacuate sounds, leave immediately by the nearest exit. Assist any person/s in immediate danger *(if safe to do so)*.
- Proceed in an orderly manner to Assembly Point.
- Remain at assembly point until all occupants are accounted for. Do not leave until the all-clear is given.

## ASSEMBLY AREAS



**FIRE MARSHALL**  
FIRE PROTECTION CONSULTANTS  
(03) 9775 0913

Date: FEB 2023  
Valid until: FEB 2028

### LEGEND

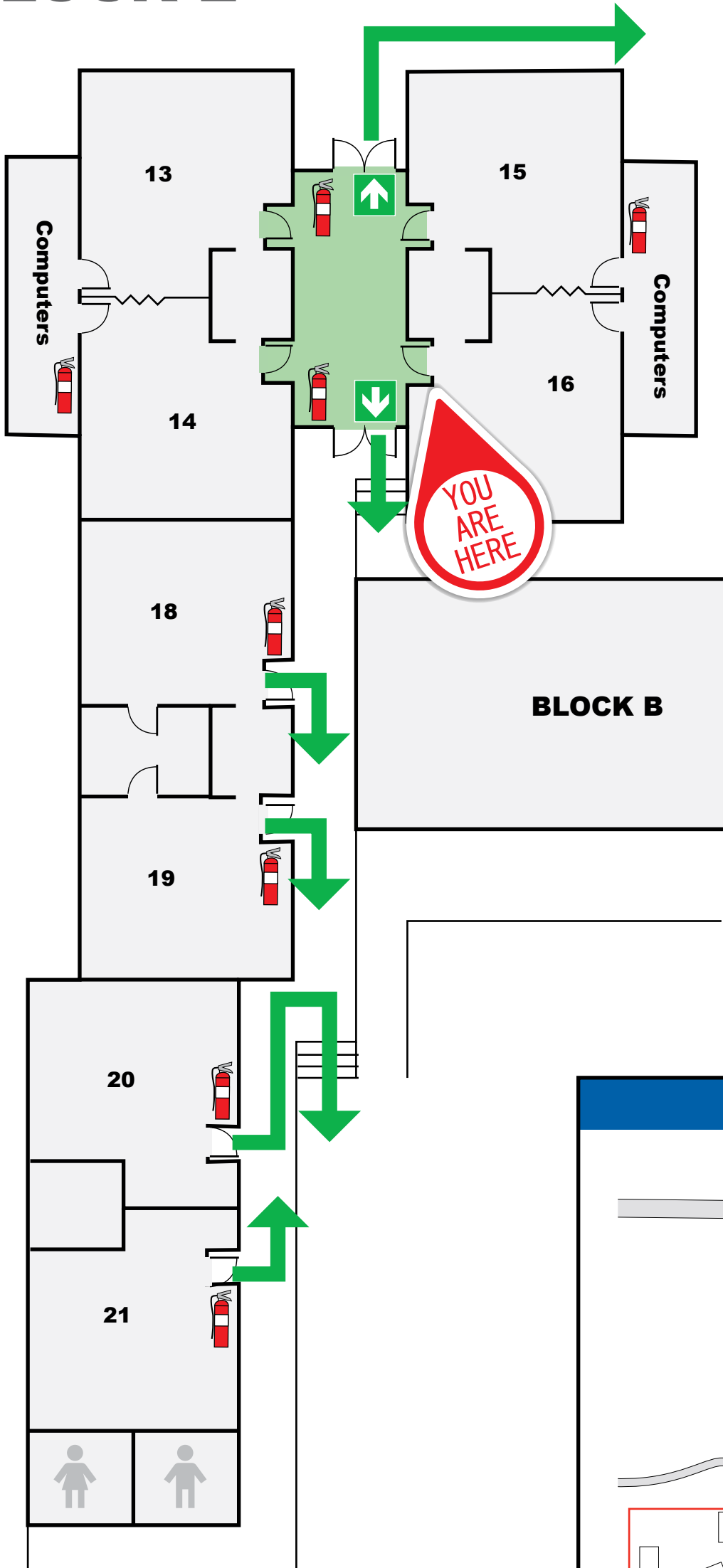
- |  |                           |  |                 |
|--|---------------------------|--|-----------------|
|  | Dry Chemical Extinguisher |  | Primary Route   |
|  | Hose reel                 |  | Alternate Route |
|  | First Aid Kit             |  | Emergency Exit  |
|  |                           |  | Assembly Area   |

PLAN IS NOT TO SCALE



# EVACUATION DIAGRAM

## BLOCK E



**TEMPLETON**  
MELBOURNE, AUSTRALIA

TEMPLETON PRIMARY SCHOOL  
1 CRESTDALE RD, WANTIRNA 3152

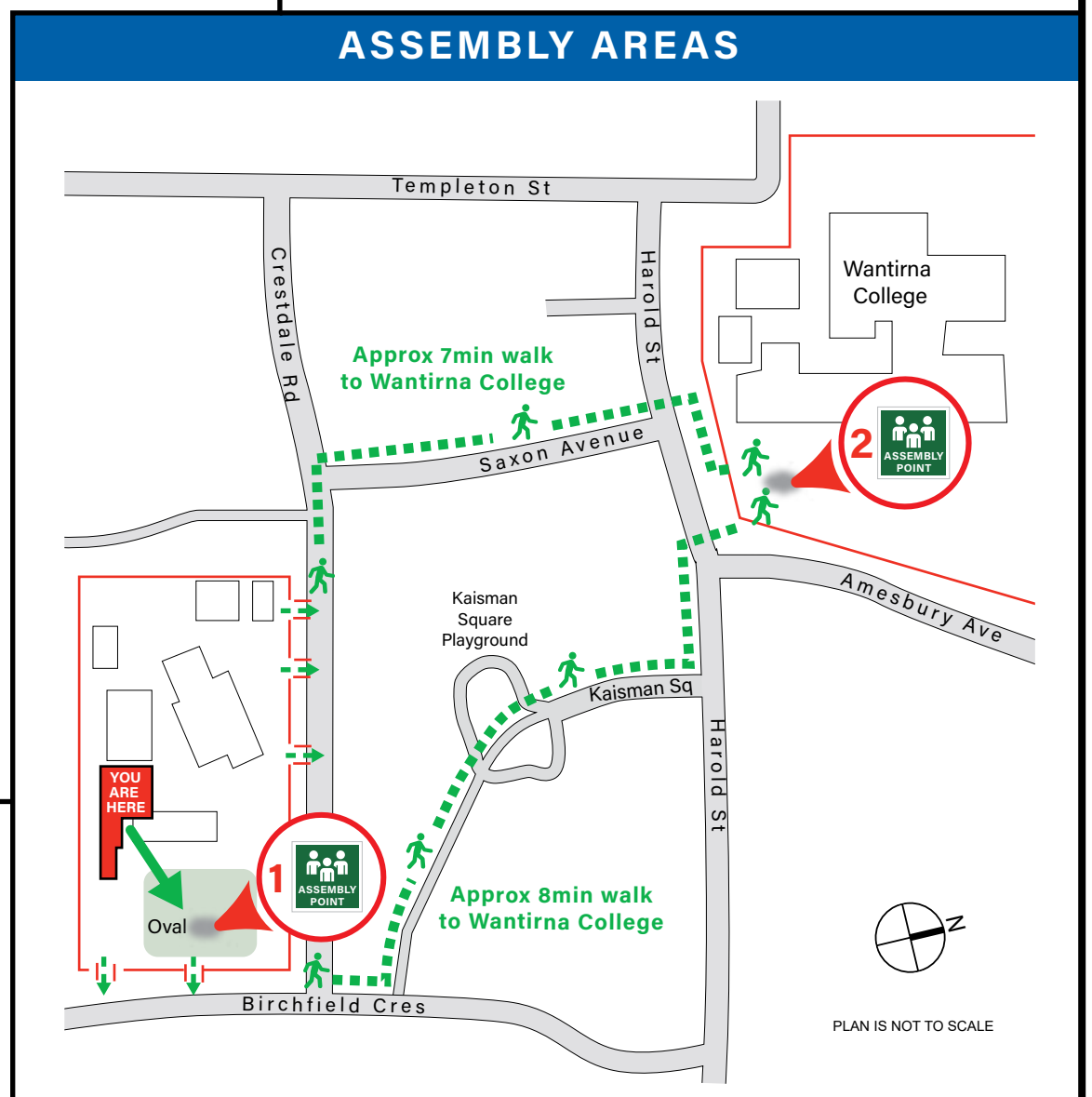


- 1 PRIMARY ASSEMBLY POINT**  
(On-site) - School Oval
- 2 SECONDARY ASSEMBLY POINT**  
(Off-site) - Wantirna College

## EVACUATION PROCEDURES

1. When the alert to Evacuate sounds, leave immediately by the nearest exit. Assist any person/s in immediate danger *(if safe to do so)*.
2. Proceed in an orderly manner to Assembly Point.
3. Remain at assembly point until all occupants are accounted for. Do not leave until the all-clear is given.

## ASSEMBLY AREAS



**FIRE MARSHALL**  
FIRE PROTECTION CONSULTANTS  
(03) 9775 0913

Date: FEB 2023  
Valid until: FEB 2028

### LEGEND

- |  |                           |
|--|---------------------------|
|  | Primary Route             |
|  | Alternate Route           |
|  | Emergency Exit            |
|  | Assembly Area             |
|  | Dry Chemical Extinguisher |
|  | Hose reel                 |
|  | First Aid Kit             |

PLAN IS NOT TO SCALE