

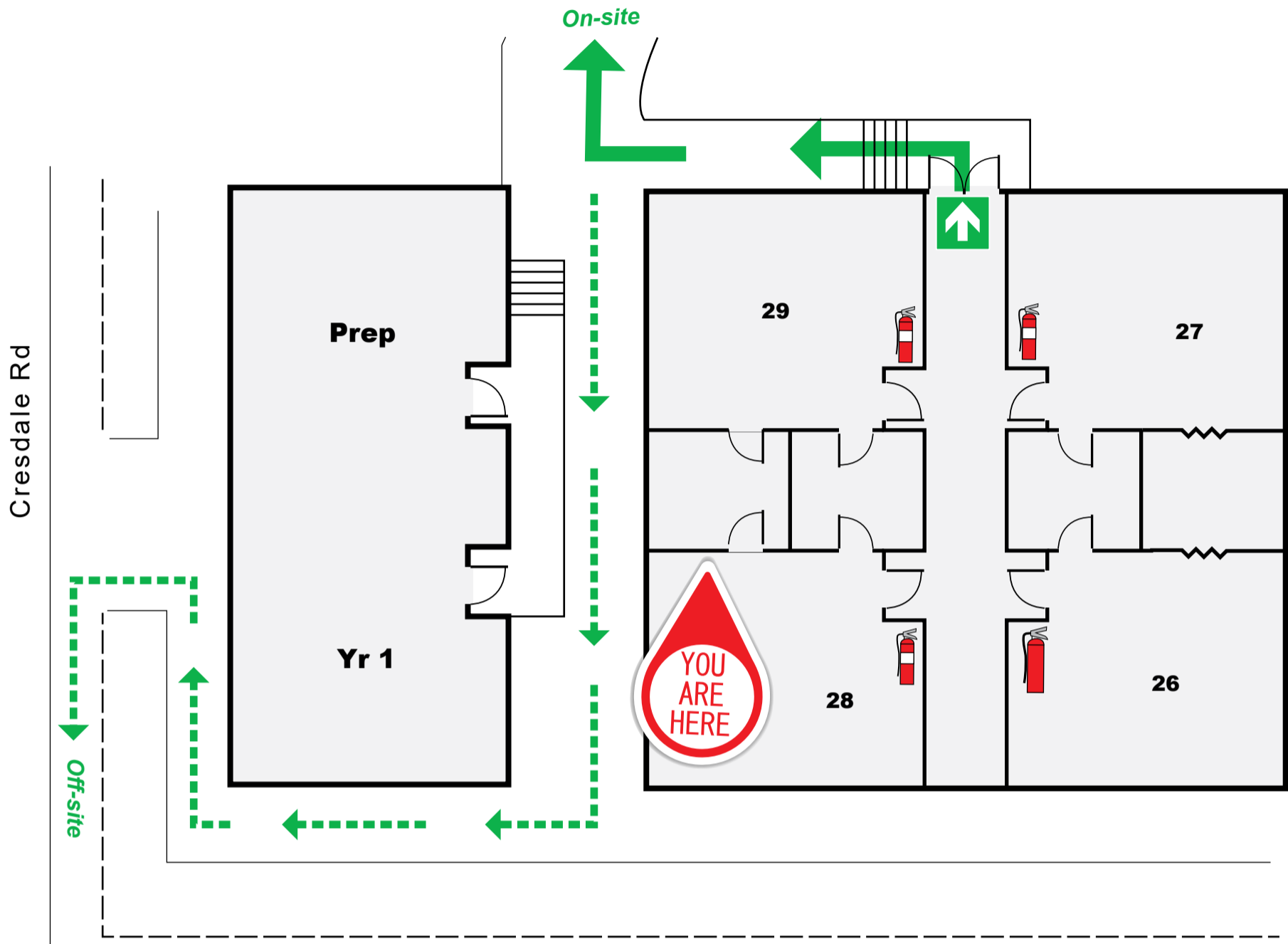
EVACUATION DIAGRAM

BLOCK D



TEMPLETON
MELBOURNE, AUSTRALIA

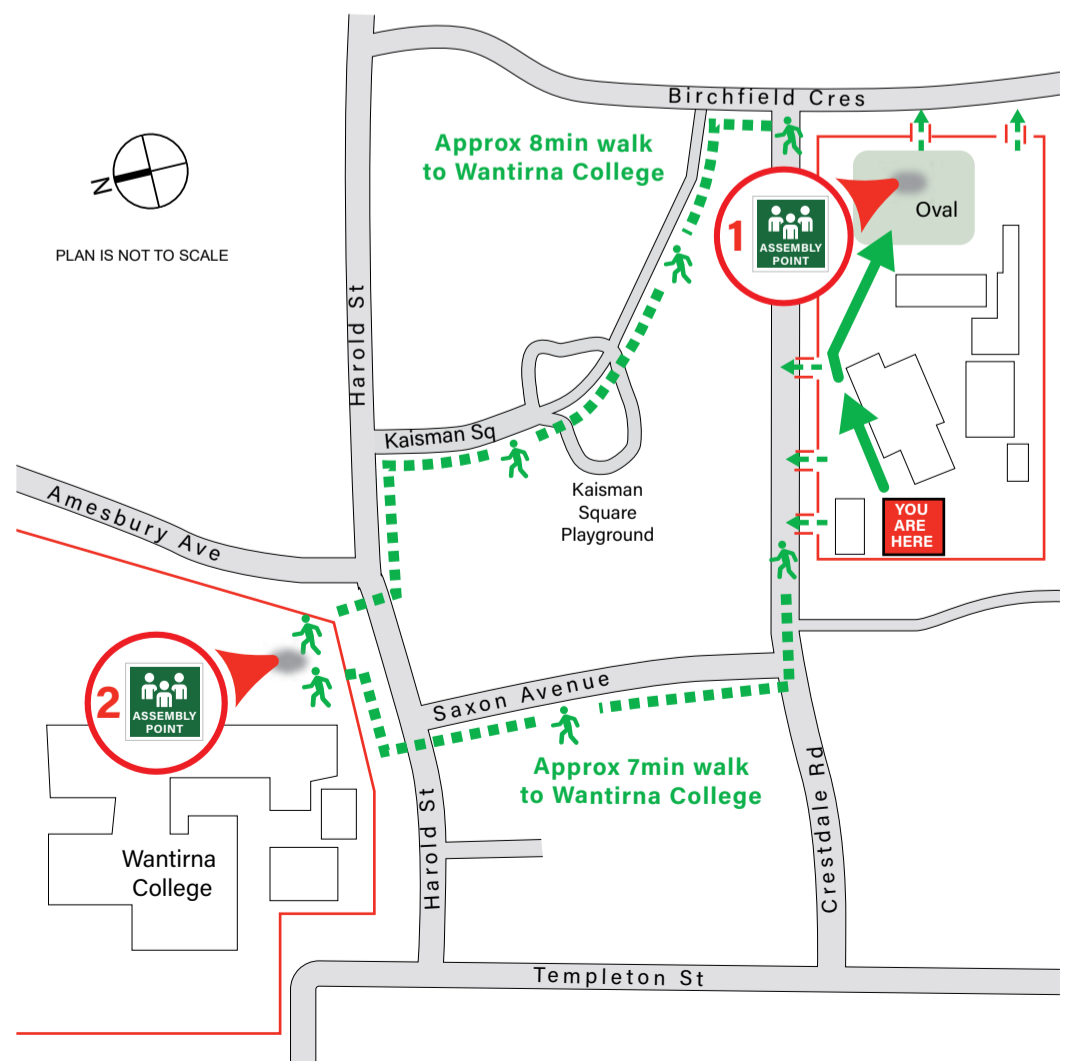
TEMPLETON PRIMARY SCHOOL
1 CRESDALE RD, WANTIRNA 3152



EVACUATION PROCEDURE

1. When the alert to Evacuate sounds, leave immediately by the nearest exit. Assist any person/s in immediate danger (if safe to do so).
2. Proceed in an orderly manner to Assembly Point.
3. Remain at assembly point until all occupants are accounted for. Do not leave until the all-clear is given.

ASSEMBLY AREAS



1 PRIMARY ASSEMBLY POINT
(On-site) - School Oval

2 SECONDARY ASSEMBLY POINT
(Off-site) - Wantirna College

FIRE MARSHALL
FIRE PROTECTION CONSULTANTS
(03) 9775 0913
Date: FEB 2023
Valid until: FEB 2028

LEGEND

- | | |
|--|---------------------------|
| | First Aid Kit |
| | Dry Chemical Extinguisher |
| | Water Extinguisher |
| | Hose reel |
| | Primary Route |
| | Alternate Route |
| | Emergency Exit |
| | Assembly Area |

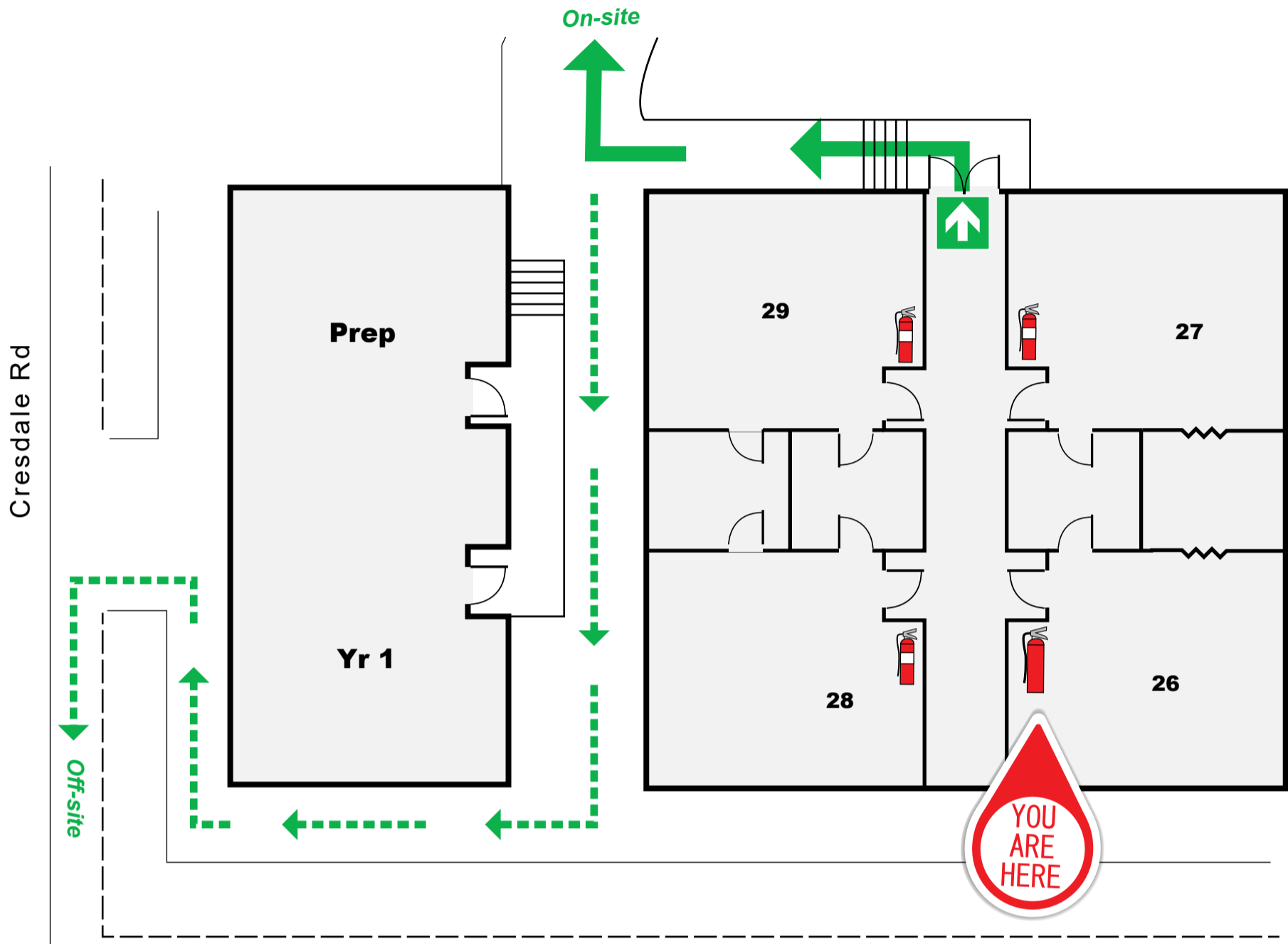
EVACUATION DIAGRAM

BLOCK D



TEMPLETON
MELBOURNE, AUSTRALIA

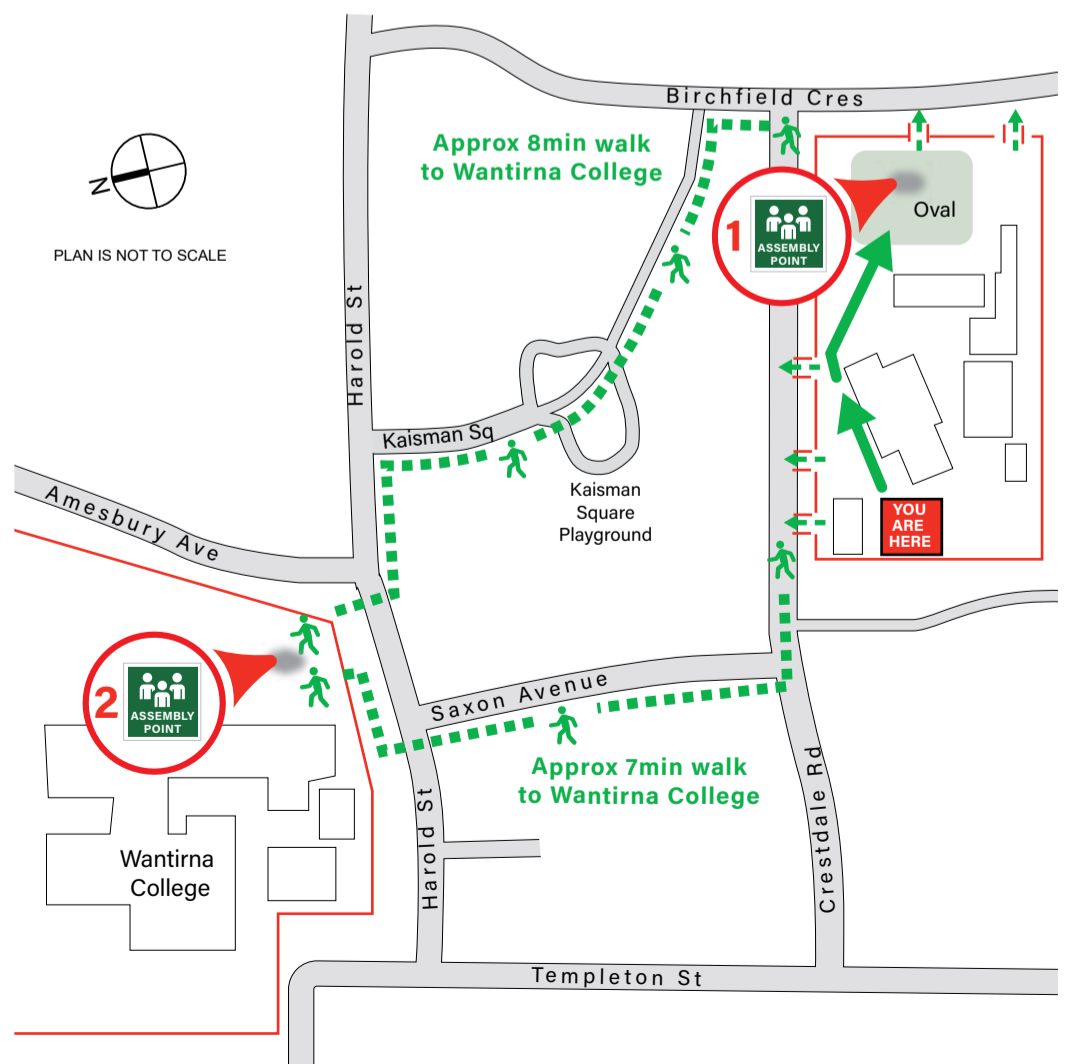
TEMPLETON PRIMARY SCHOOL
1 CRESDALE RD, WANTIRNA 3152



EVACUATION PROCEDURE

1. When the alert to Evacuate sounds, leave immediately by the nearest exit. Assist any person/s in immediate danger (if safe to do so).
2. Proceed in an orderly manner to Assembly Point.
3. Remain at assembly point until all occupants are accounted for. Do not leave until the all-clear is given.

ASSEMBLY AREAS



1 PRIMARY ASSEMBLY POINT
(On-site) - School Oval

2 SECONDARY ASSEMBLY POINT
(Off-site) - Wantirna College

FIRE MARSHALL
FIRE PROTECTION CONSULTANTS
(03) 9775 0913
Date: FEB 2023
Valid until: FEB 2028

LEGEND

- First Aid Kit
- Dry Chemical Extinguisher
- Water Extinguisher
- Hose reel
- Primary Route
- Alternate Route
- Emergency Exit
- Assembly Area

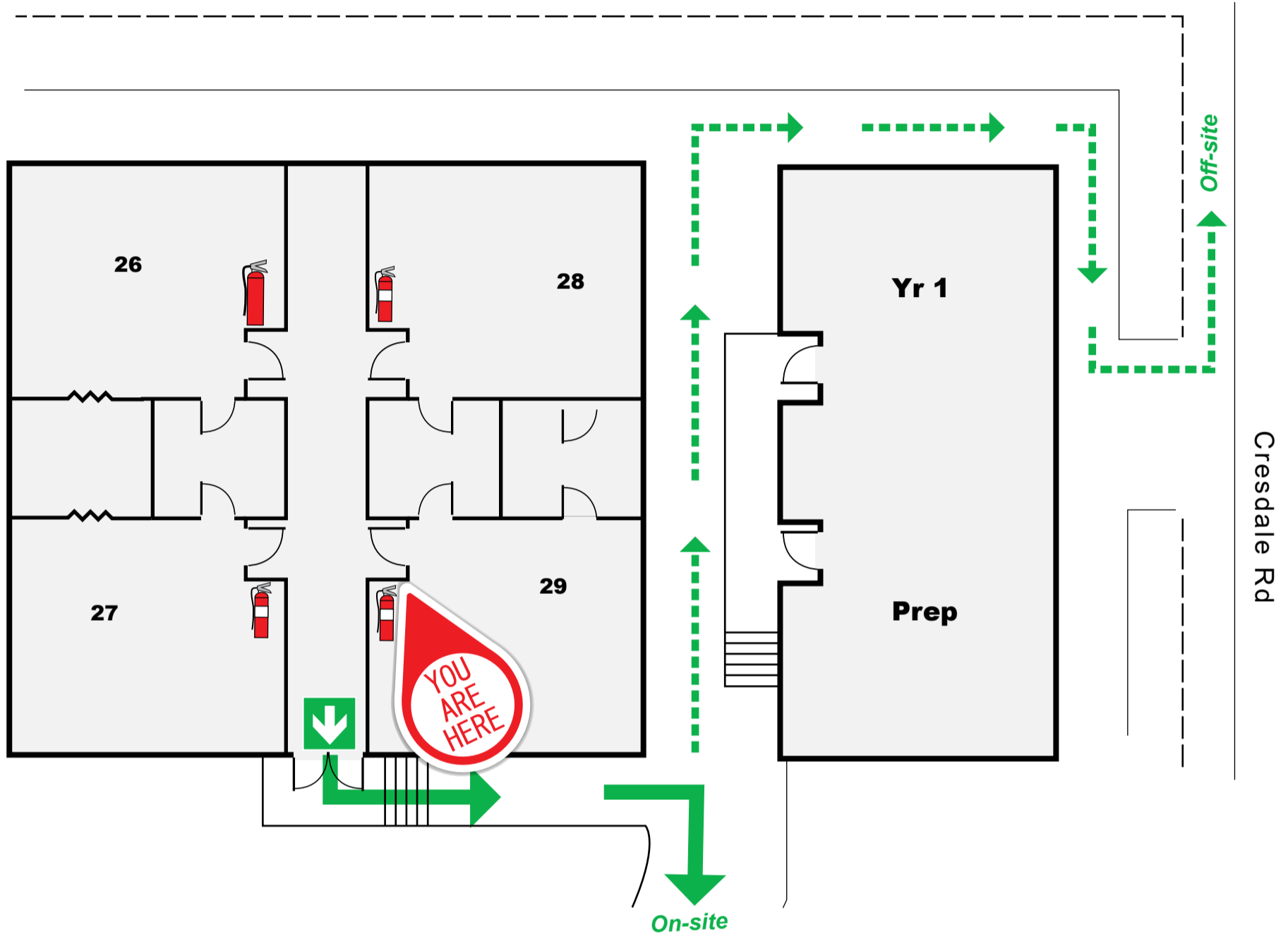
EVACUATION DIAGRAM

BLOCK D



TEMPLETON
MELBOURNE, AUSTRALIA

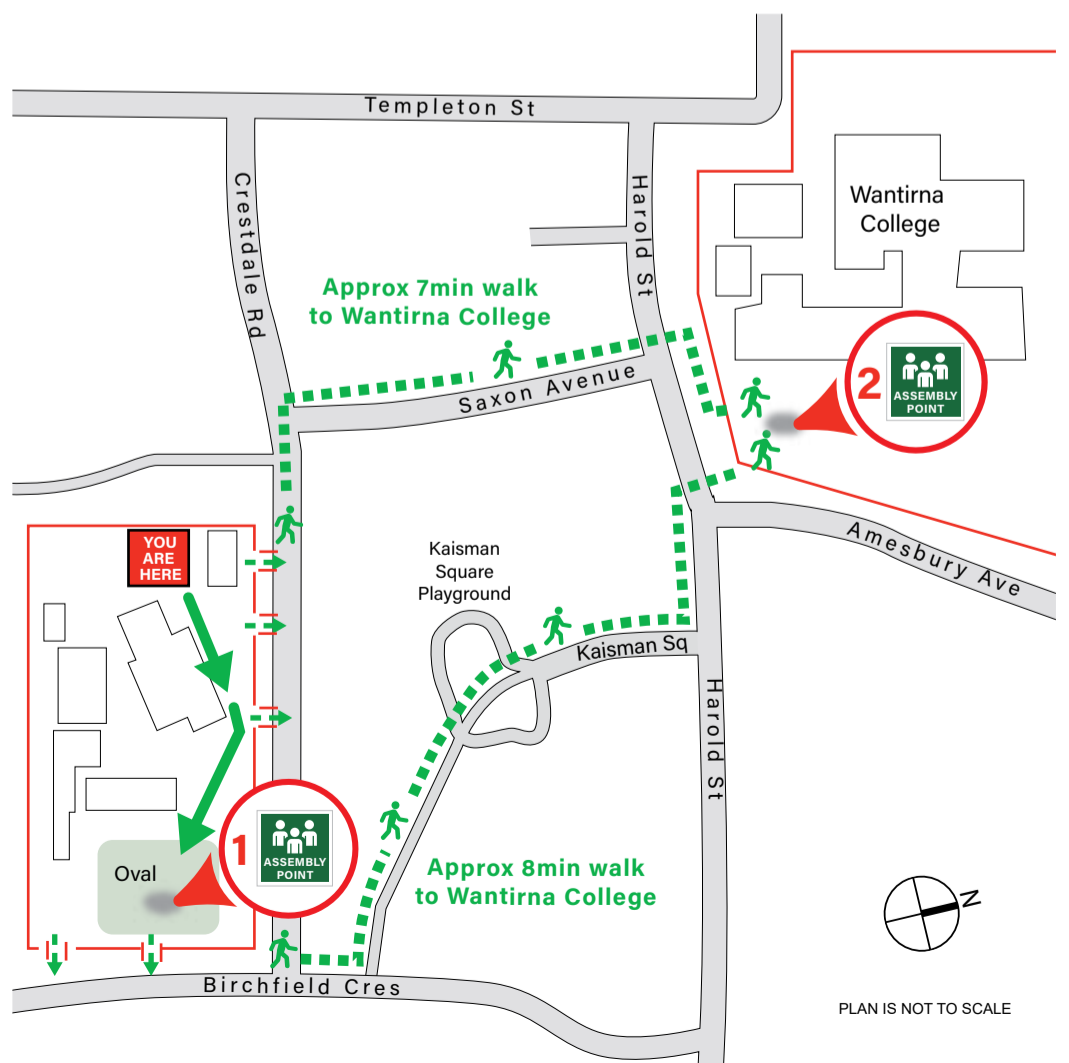
TEMPLETON PRIMARY SCHOOL
1 CRESDALE RD, WANTIRNA 3152



EVACUATION PROCEDURE

1. When the alert to Evacuate sounds, leave immediately by the nearest exit. Assist any person/s in immediate danger (if safe to do so).
2. Proceed in an orderly manner to Assembly Point.
3. Remain at assembly point until all occupants are accounted for. Do not leave until the all-clear is given.

ASSEMBLY AREAS



1 PRIMARY ASSEMBLY POINT
(On-site) - School Oval

2 SECONDARY ASSEMBLY POINT
(Off-site) - Wantirna College

FIRE MARSHALL
FIRE PROTECTION CONSULTANTS
(03) 9775 0913
Date: FEB 2023
Valid until: FEB 2028

LEGEND

- Dry Chemical Extinguisher
- Water Extinguisher
- Hose reel
- First Aid Kit
- Primary Route
- Alternate Route
- Emergency Exit
- Assembly Area



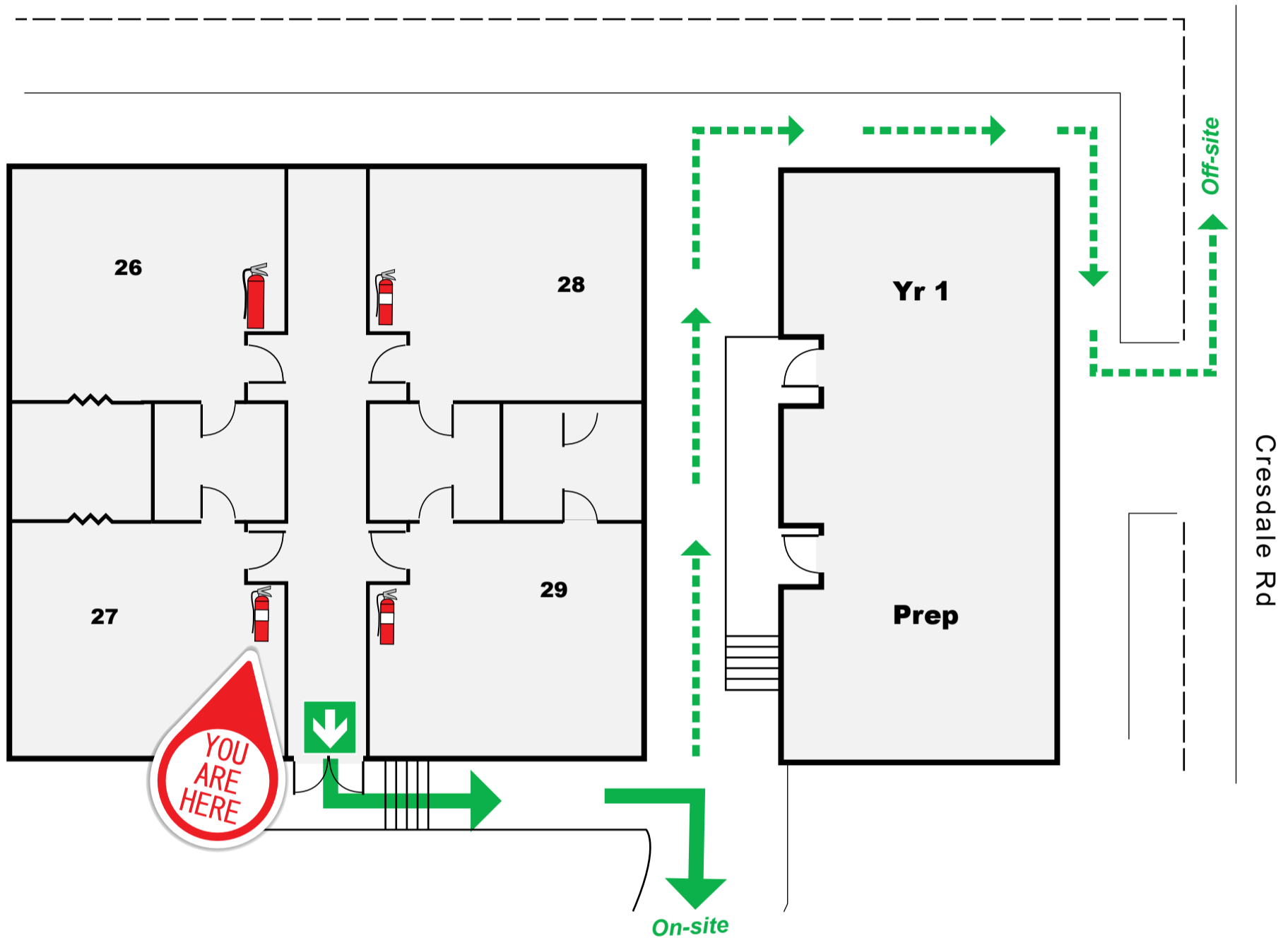
EVACUATION DIAGRAM

BLOCK D



TEMPLETON
MELBOURNE, AUSTRALIA

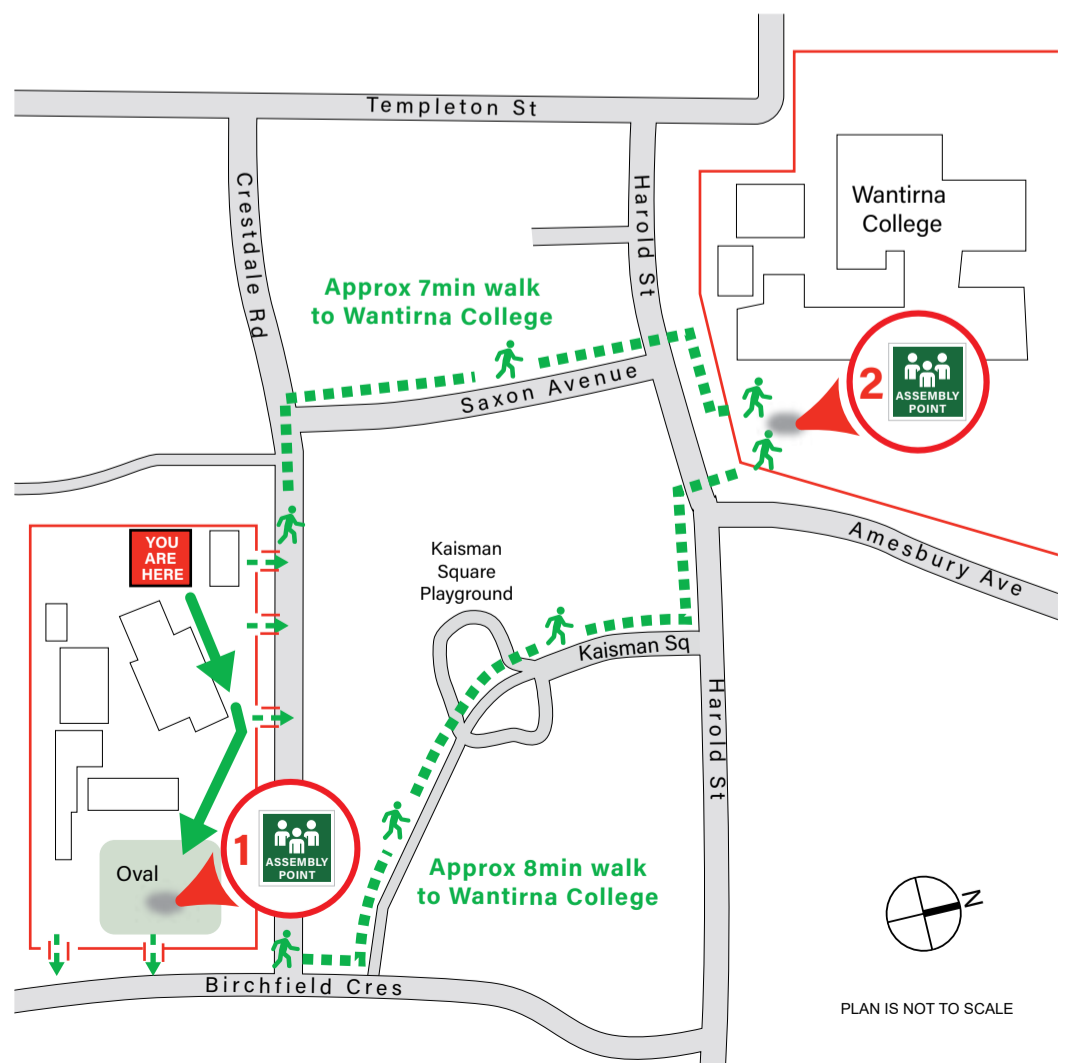
TEMPLETON PRIMARY SCHOOL
1 CRESDALE RD, WANTIRNA 3152



EVACUATION PROCEDURE

1. When the alert to Evacuate sounds, leave immediately by the nearest exit. Assist any person/s in immediate danger (if safe to do so).
2. Proceed in an orderly manner to Assembly Point.
3. Remain at assembly point until all occupants are accounted for. Do not leave until the all-clear is given.

ASSEMBLY AREAS



1 PRIMARY ASSEMBLY POINT
(On-site) - School Oval

2 SECONDARY ASSEMBLY POINT
(Off-site) - Wantirna College



FIRE MARSHALL
FIRE PROTECTION CONSULTANTS
(03) 9775 0913

Date: FEB 2023
Valid until: FEB 2028

LEGEND

- Dry Chemical Extinguisher
- Water Extinguisher
- Hose reel
- First Aid Kit
- Primary Route
- Alternate Route
- Emergency Exit
- Assembly Area

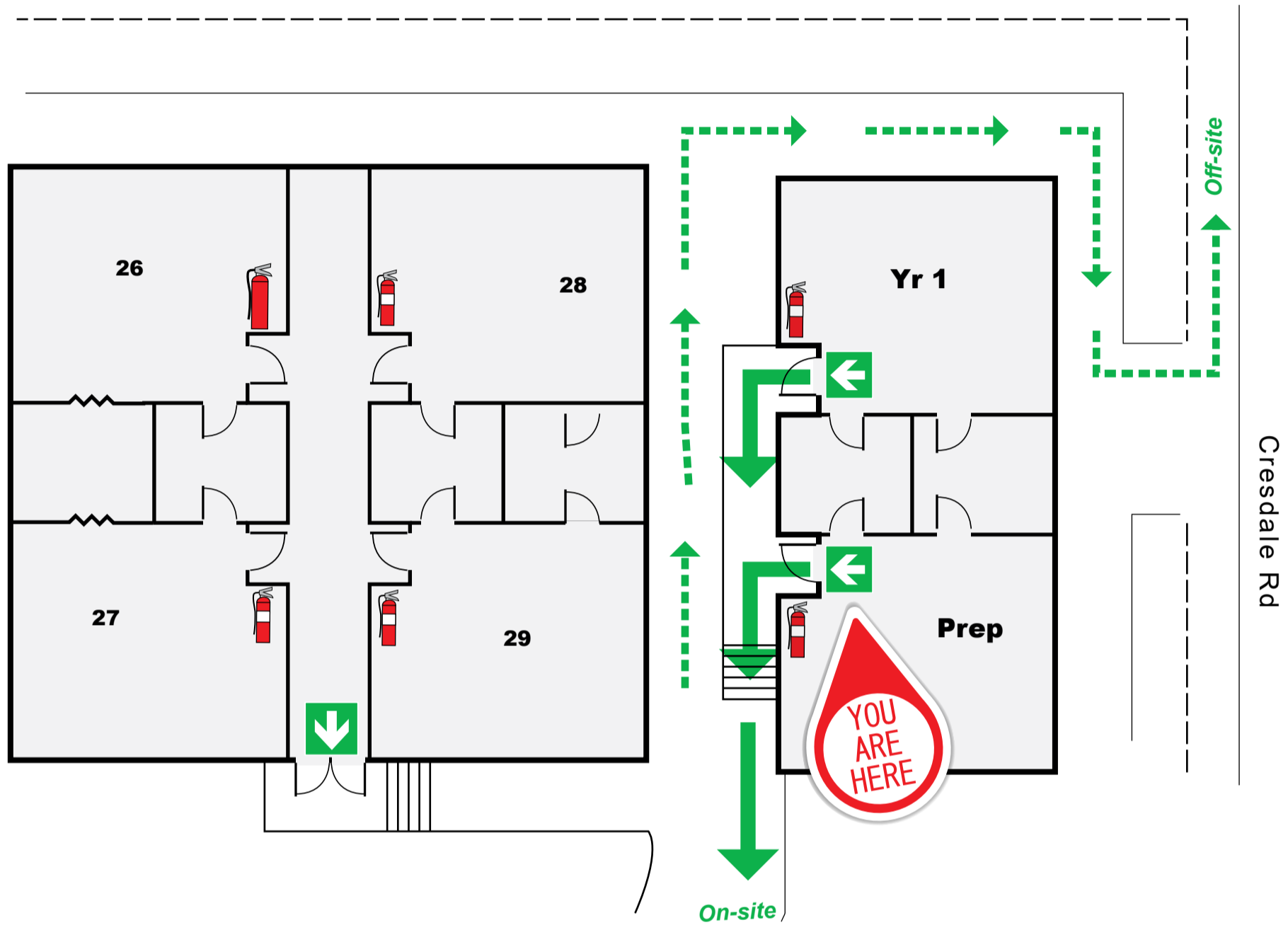
EVACUATION DIAGRAM

BLOCK D



TEMPLETON
MELBOURNE, AUSTRALIA

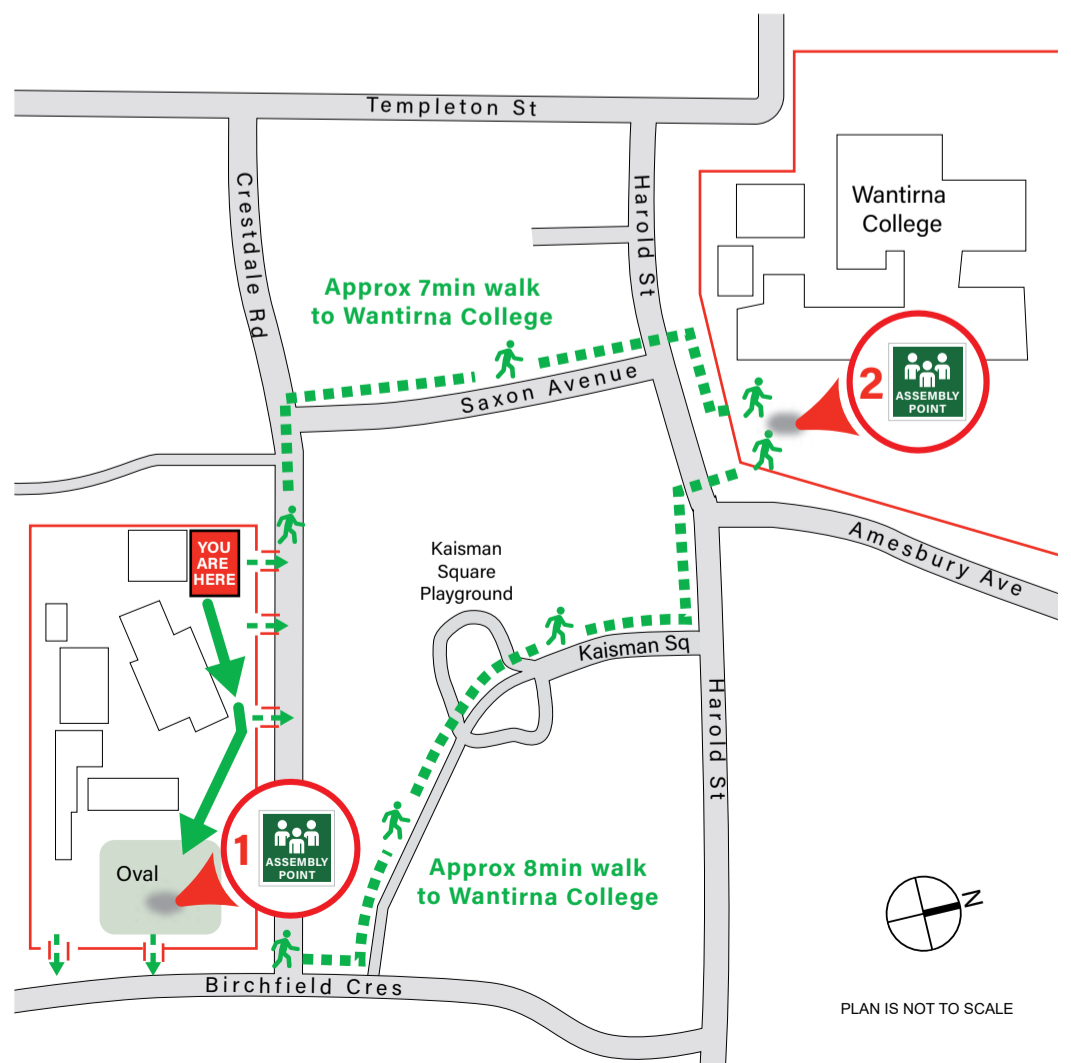
TEMPLETON PRIMARY SCHOOL
1 CRESTDALE RD, WANTIRNA 3152



EVACUATION PROCEDURE

1. When the alert to Evacuate sounds, leave immediately by the nearest exit. Assist any person/s in immediate danger (if safe to do so).
2. Proceed in an orderly manner to Assembly Point.
3. Remain at assembly point until all occupants are accounted for. Do not leave until the all-clear is given.

ASSEMBLY AREAS



1 PRIMARY ASSEMBLY POINT
(On-site) - School Oval

2 SECONDARY ASSEMBLY POINT
(Off-site) - Wantirna College



FIRE MARSHALL
FIRE PROTECTION CONSULTANTS
(03) 9775 0913

Date: FEB 2023
Valid until: FEB 2028

LEGEND

- | | | | |
|--|---------------------------|--|-----------------|
| | Dry Chemical Extinguisher | | First Aid Kit |
| | Water Extinguisher | | Primary Route |
| | Hose reel | | Alternate Route |
| | Assembly Area | | Emergency Exit |



PLAN IS NOT TO SCALE