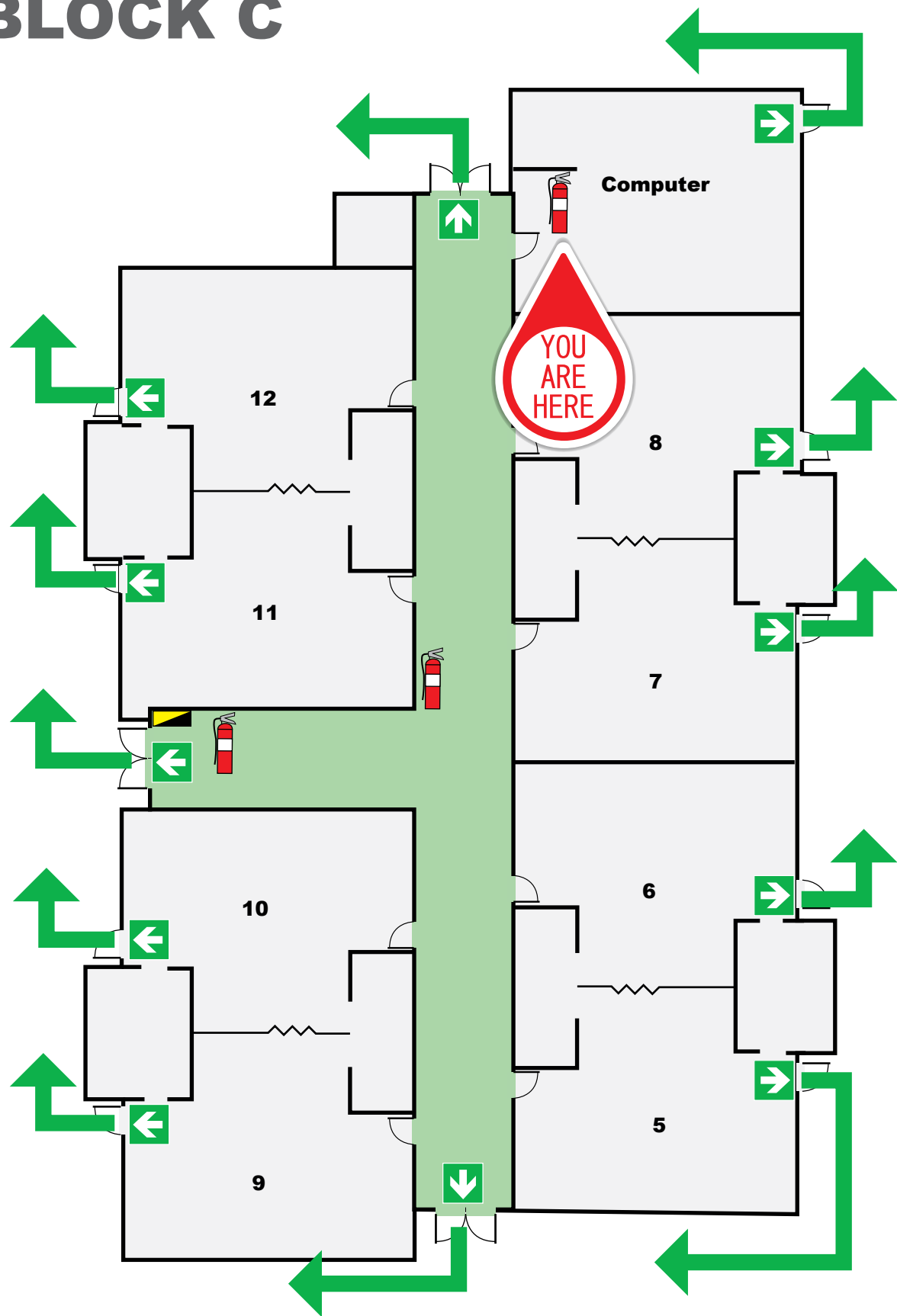


EVACUATION DIAGRAM

BLOCK C



TEMPLETON

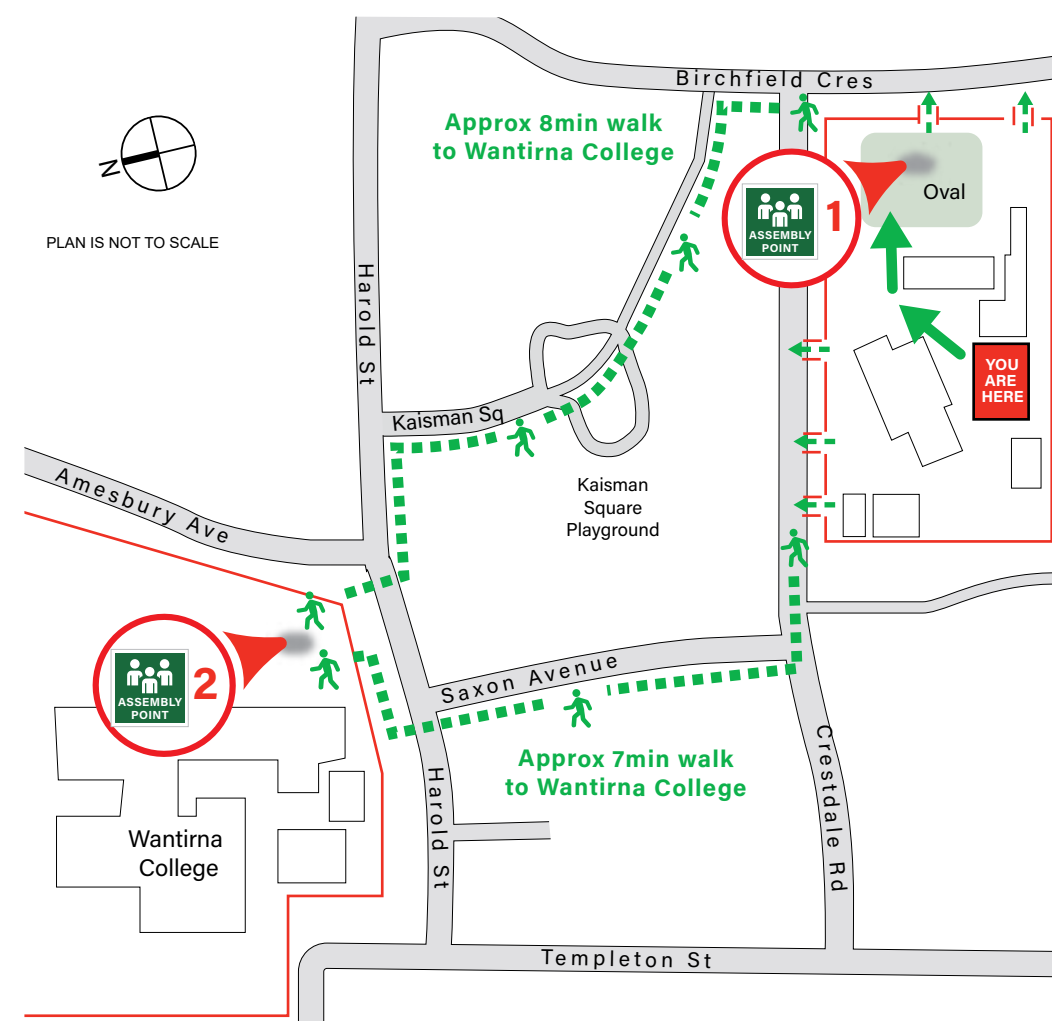
MELBOURNE, AUSTRALIA

TEMPLETON PRIMARY SCHOOL
1 CRESTDALE RD, WANTIRNA 3152

1 PRIMARY ASSEMBLY POINT
(On-site) - School Oval

2 SECONDARY ASSEMBLY POINT
(Off-site) - Wantirna College

ASSEMBLY AREAS



LEGEND

- Hose reel
- Dry Chemical Extinguisher
- First Aid Kit
- Emergency Exit
- Primary Route
- Alternate Route
- Assembly Area

FIRE MARSHALL
FIRE PROTECTION CONSULTANTS
(03) 9775 0913
Date: FEB 2023
Valid until: FEB 2028

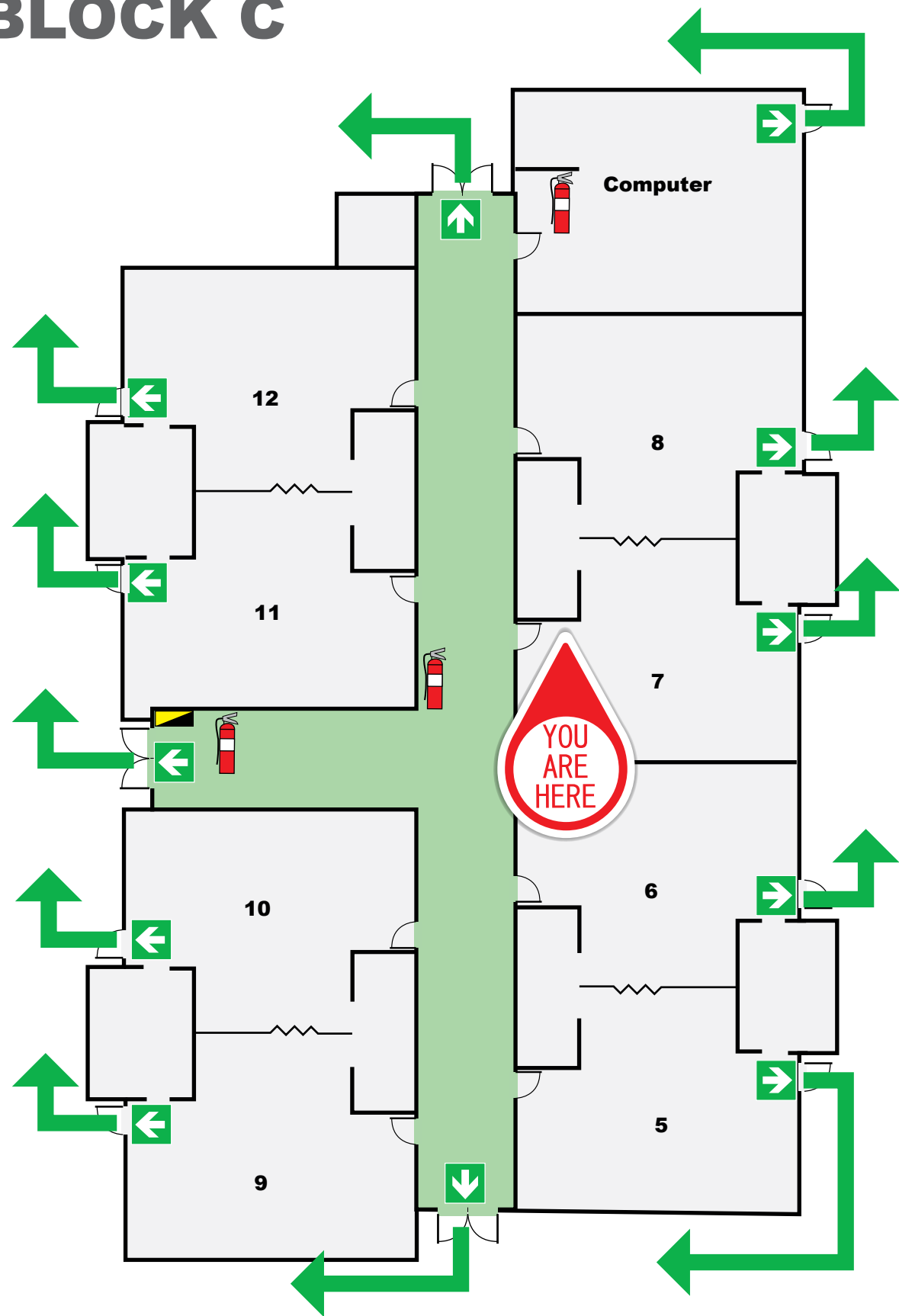
EVACUATION PROCEDURES



1. When the alert to Evacuate sounds, leave immediately by the nearest exit. Assist any person/s in immediate danger (if safe to do so).
2. Proceed in an orderly manner to Assembly Point.
3. Remain at assembly point until all occupants are accounted for. Do not leave until the all-clear is given.

EVACUATION DIAGRAM

BLOCK C



TEMPLETON

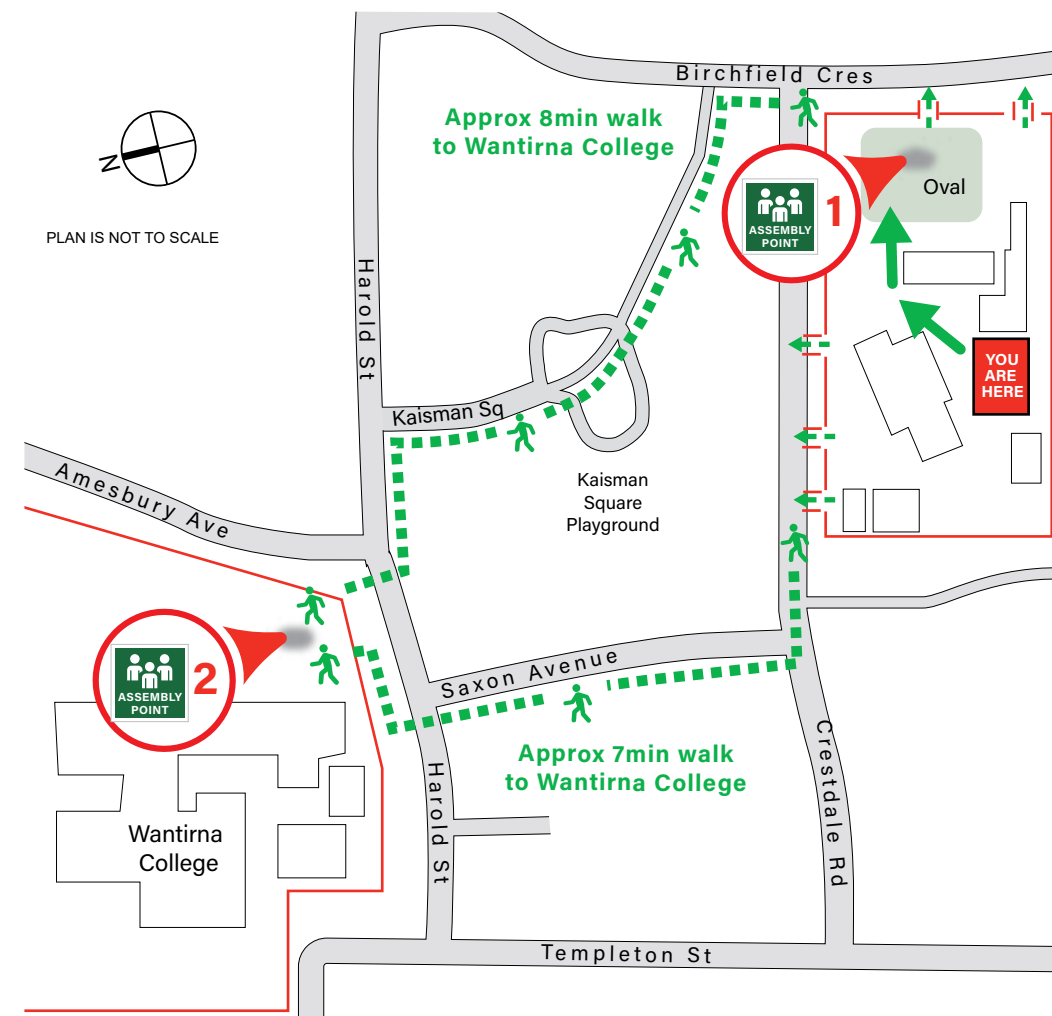
MELBOURNE, AUSTRALIA

TEMPLETON PRIMARY SCHOOL
1 CRESTDALE RD, WANTIRNA 3152

1 PRIMARY ASSEMBLY POINT
(On-site) - School Oval

2 SECONDARY ASSEMBLY POINT
(Off-site) - Wantirna College

ASSEMBLY AREAS



LEGEND

- Hose reel
- Dry Chemical Extinguisher
- First Aid Kit
- Emergency Exit
- Primary Route
- Alternate Route
- Assembly Area

FIRE MARSHALL
FIRE PROTECTION CONSULTANTS
(03) 9775 0913
Date: FEB 2023
Valid until: FEB 2028

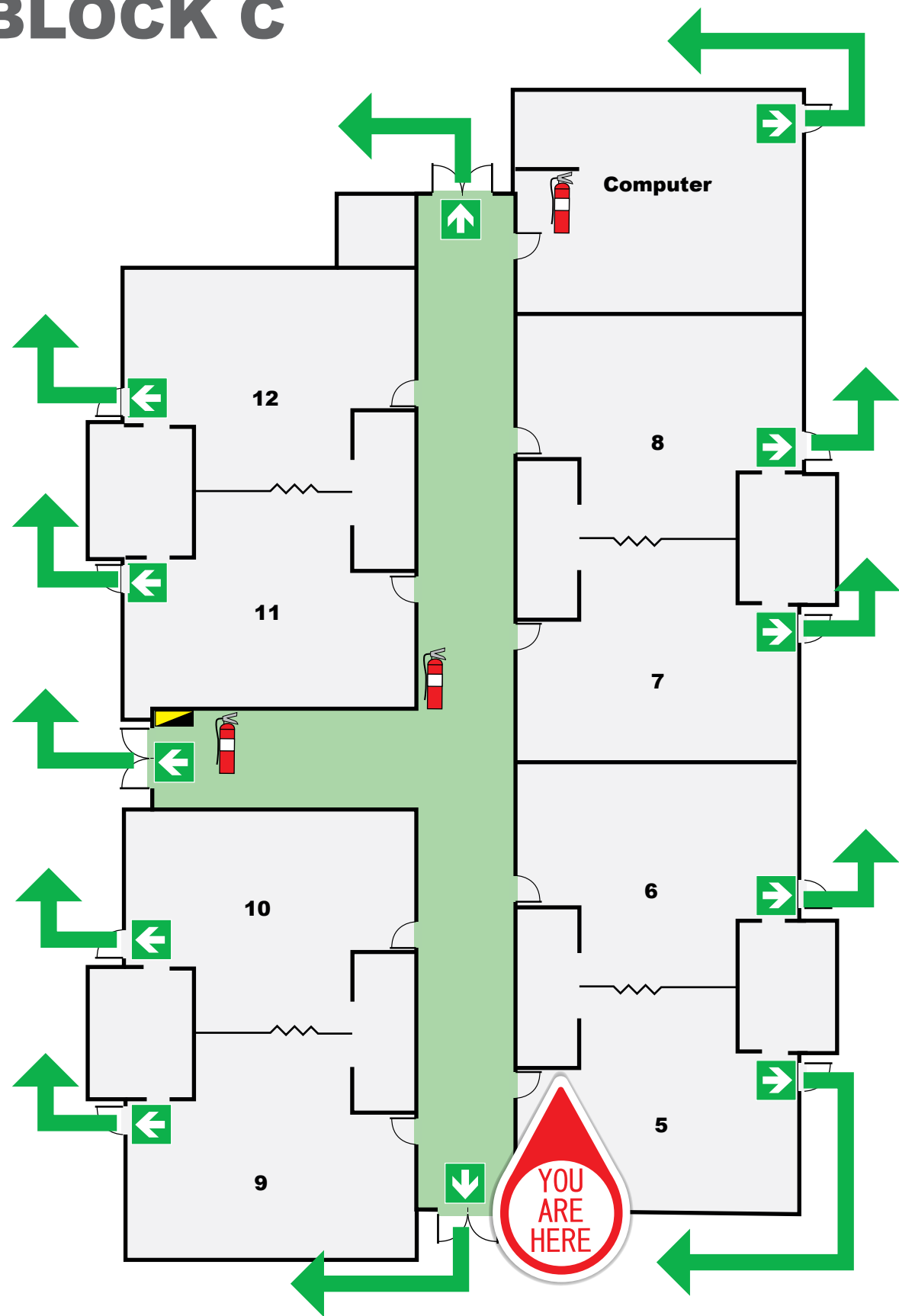
EVACUATION PROCEDURES



1. When the alert to Evacuate sounds, leave immediately by the nearest exit. Assist any person/s in immediate danger (if safe to do so).
2. Proceed in an orderly manner to Assembly Point.
3. Remain at assembly point until all occupants are accounted for. Do not leave until the all-clear is given.

EVACUATION DIAGRAM

BLOCK C



TEMPLETON

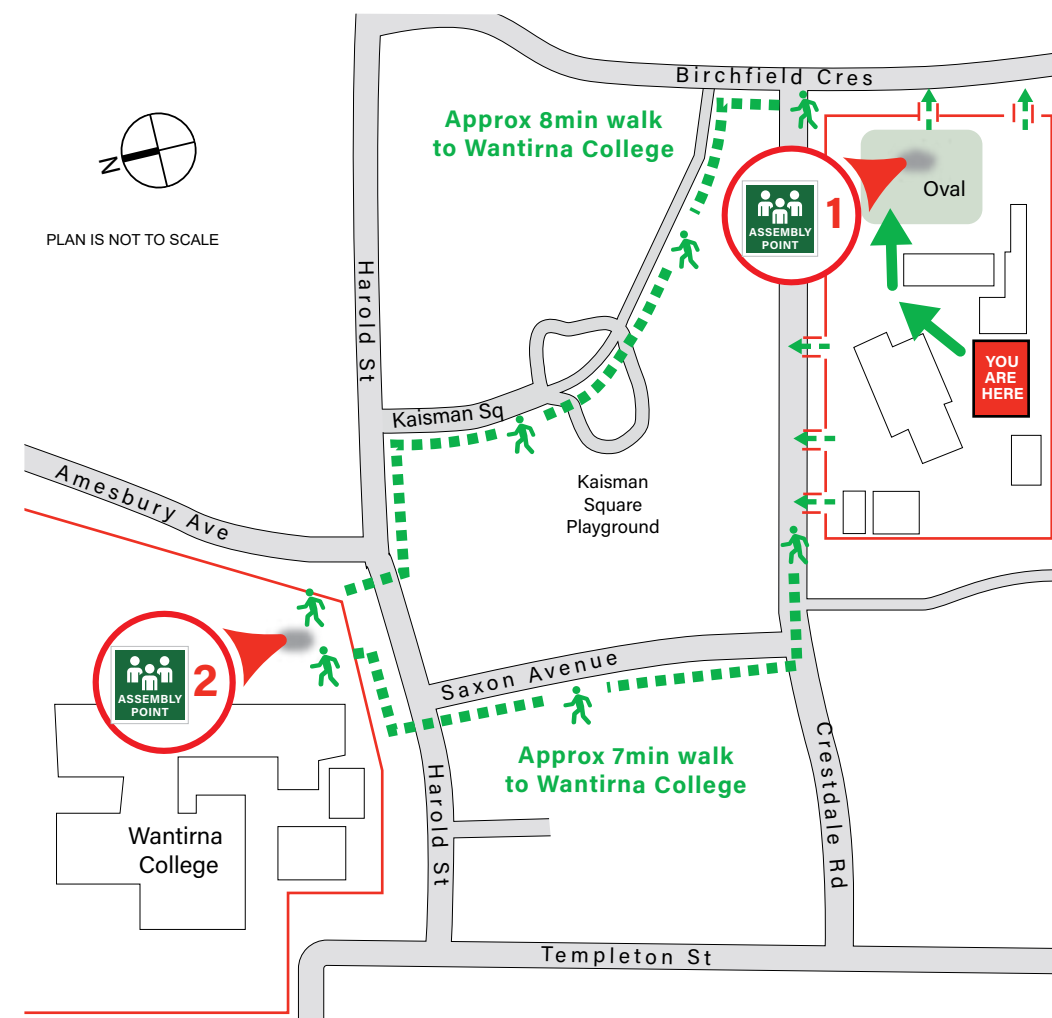
MELBOURNE, AUSTRALIA

TEMPLETON PRIMARY SCHOOL
1 CRESTDALE RD, WANTIRNA 3152

1 PRIMARY ASSEMBLY POINT
(On-site) - School Oval

2 SECONDARY ASSEMBLY POINT
(Off-site) - Wantirna College

ASSEMBLY AREAS



LEGEND

- Hose reel
- Dry Chemical Extinguisher
- First Aid Kit
- Emergency Exit
- Primary Route
- Alternate Route
- Assembly Area

FIRE MARSHALL
FIRE PROTECTION CONSULTANTS
(03) 9775 0913
Date: FEB 2023
Valid until: FEB 2028

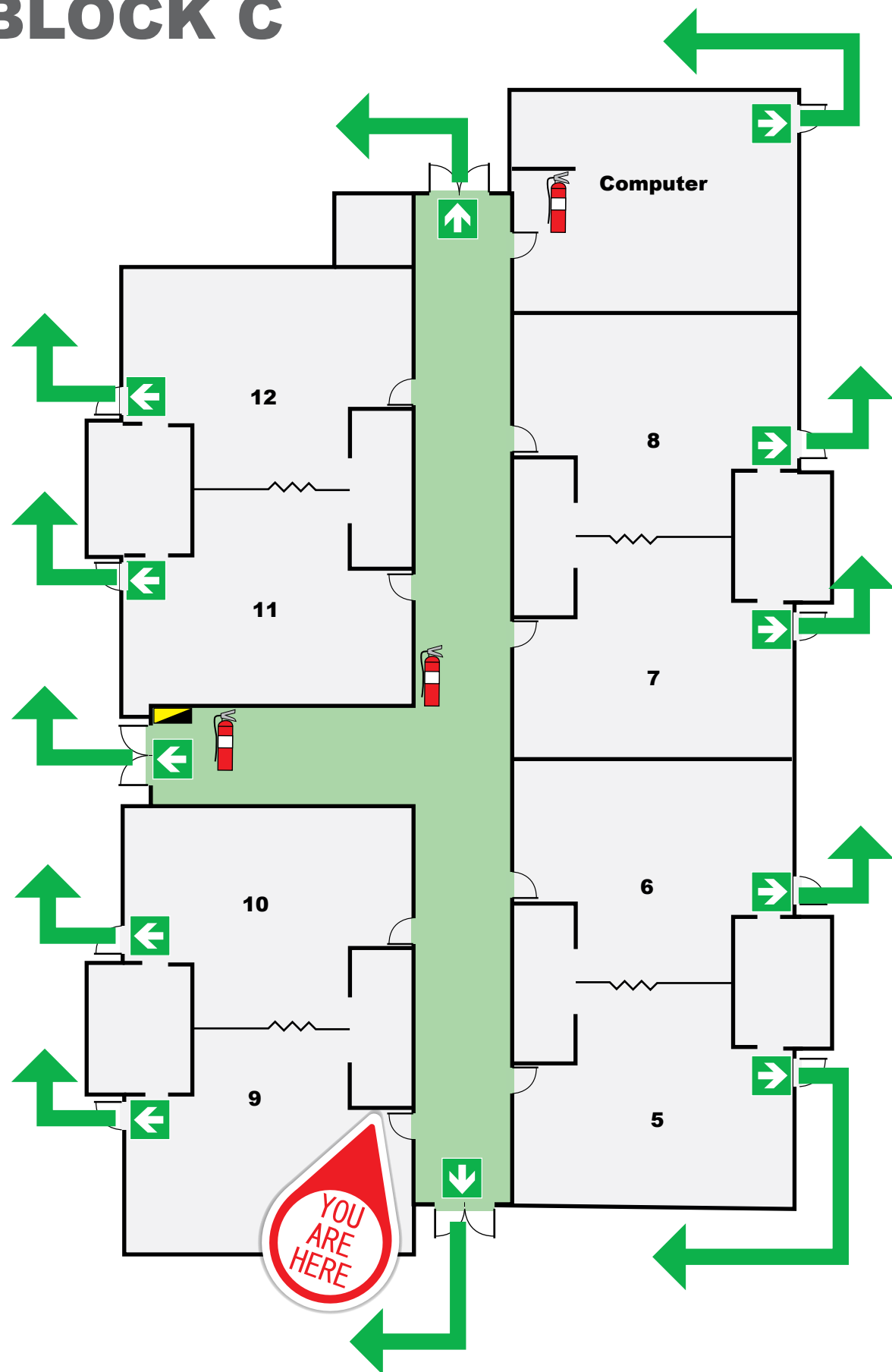
EVACUATION PROCEDURES



1. When the alert to Evacuate sounds, leave immediately by the nearest exit. Assist any person/s in immediate danger (if safe to do so).
2. Proceed in an orderly manner to Assembly Point.
3. Remain at assembly point until all occupants are accounted for. Do not leave until the all-clear is given.

EVACUATION DIAGRAM

BLOCK C



TEMPLETON

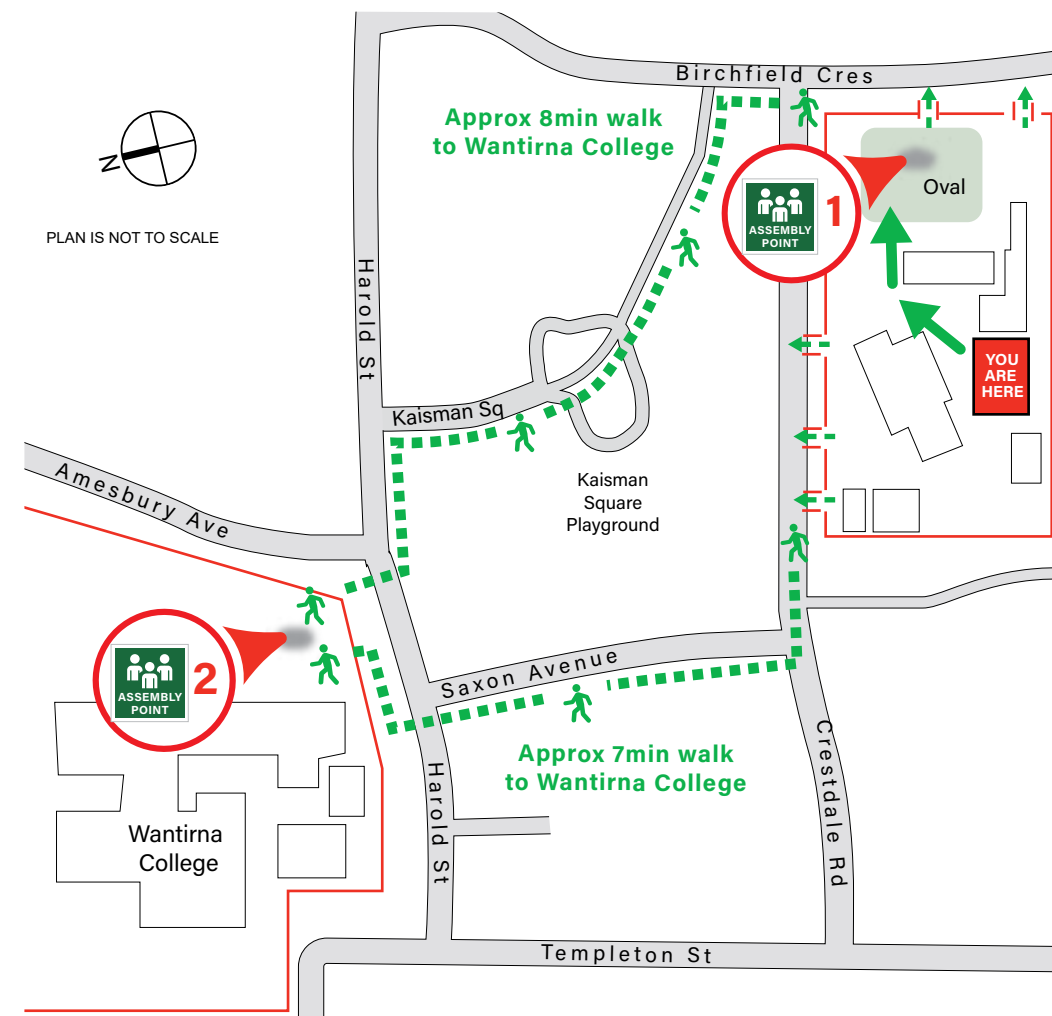
MELBOURNE, AUSTRALIA

TEMPLETON PRIMARY SCHOOL
1 CRESTDALE RD, WANTIRNA 3152

1 PRIMARY ASSEMBLY POINT
(On-site) - School Oval

2 SECONDARY ASSEMBLY POINT
(Off-site) - Wantirna College

ASSEMBLY AREAS



LEGEND

- Hose reel
- Dry Chemical Extinguisher
- First Aid Kit
- Emergency Exit
- Primary Route
- Alternate Route
- Assembly Area

FIRE MARSHALL
FIRE PROTECTION CONSULTANTS
(03) 9775 0913
Date: FEB 2023
Valid until: FEB 2028

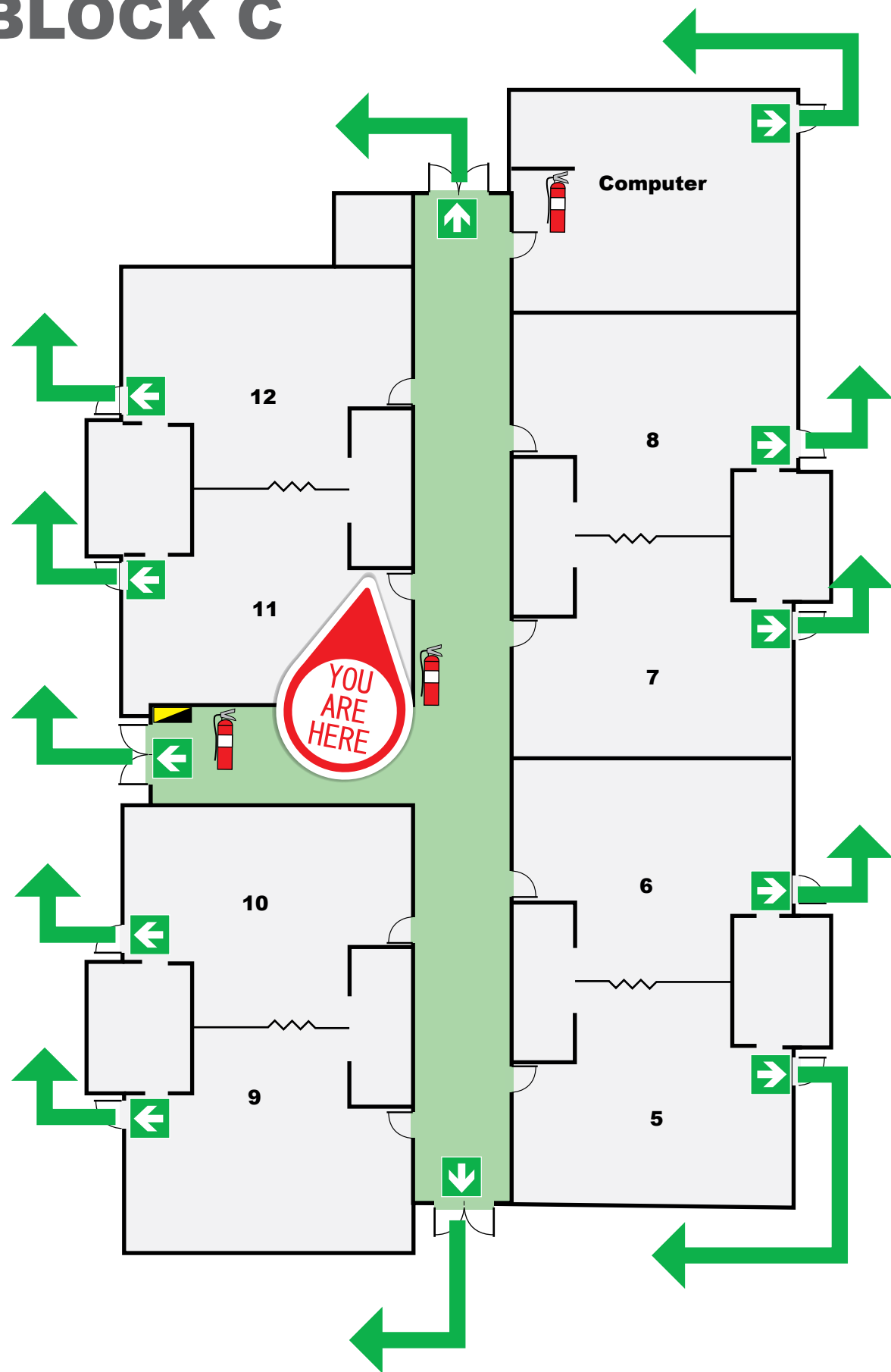
EVACUATION PROCEDURES



1. When the alert to Evacuate sounds, leave immediately by the nearest exit. Assist any person/s in immediate danger (if safe to do so).
2. Proceed in an orderly manner to Assembly Point.
3. Remain at assembly point until all occupants are accounted for. Do not leave until the all-clear is given.

EVACUATION DIAGRAM

BLOCK C



TEMPLETON

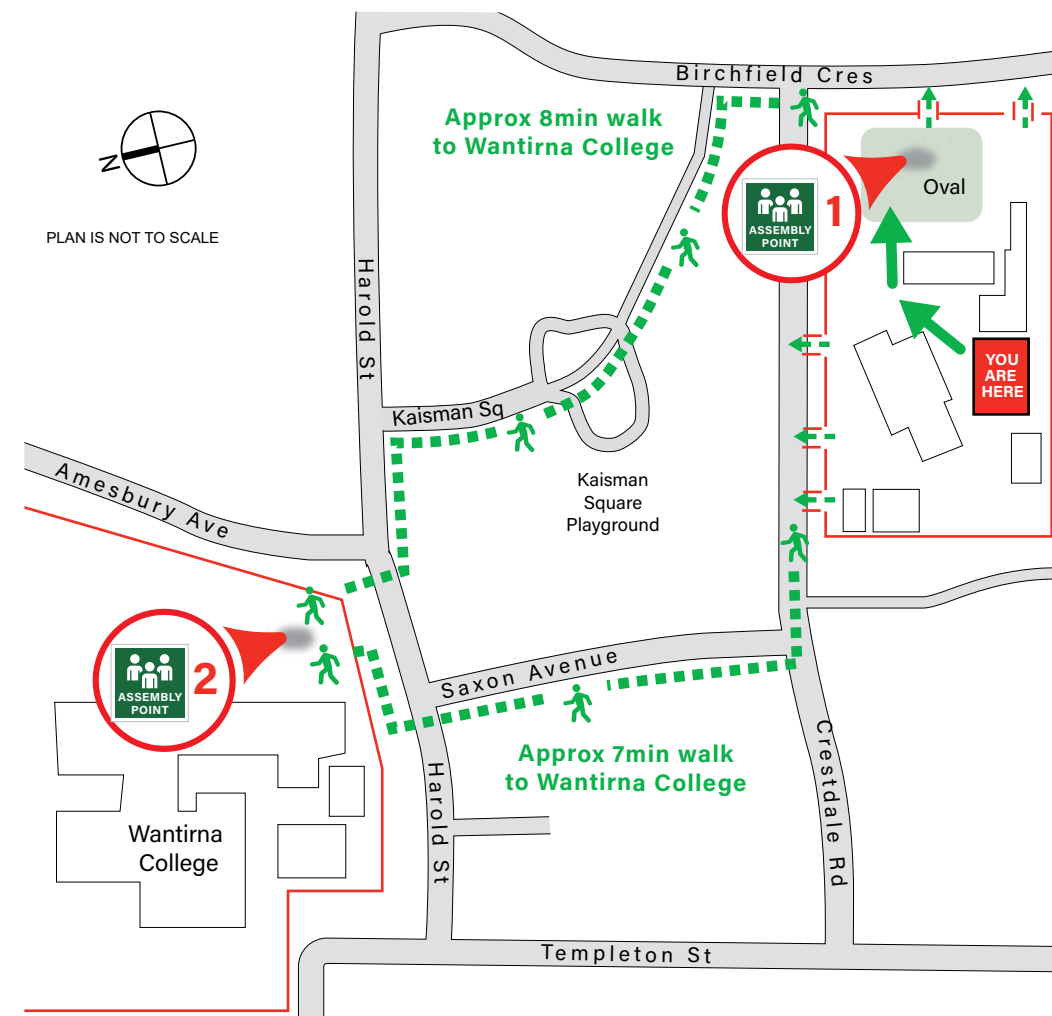
MELBOURNE, AUSTRALIA

TEMPLETON PRIMARY SCHOOL
1 CRESTDALE RD, WANTIRNA 3152

1 PRIMARY ASSEMBLY POINT
(On-site) - School Oval

2 SECONDARY ASSEMBLY POINT
(Off-site) - Wantirna College

ASSEMBLY AREAS



LEGEND

- Hose reel
- Dry Chemical Extinguisher
- First Aid Kit
- Emergency Exit
- Primary Route
- Alternate Route
- Assembly Area

FIRE MARSHALL
FIRE PROTECTION CONSULTANTS
(03) 9775 0913
Date: FEB 2023
Valid until: FEB 2028

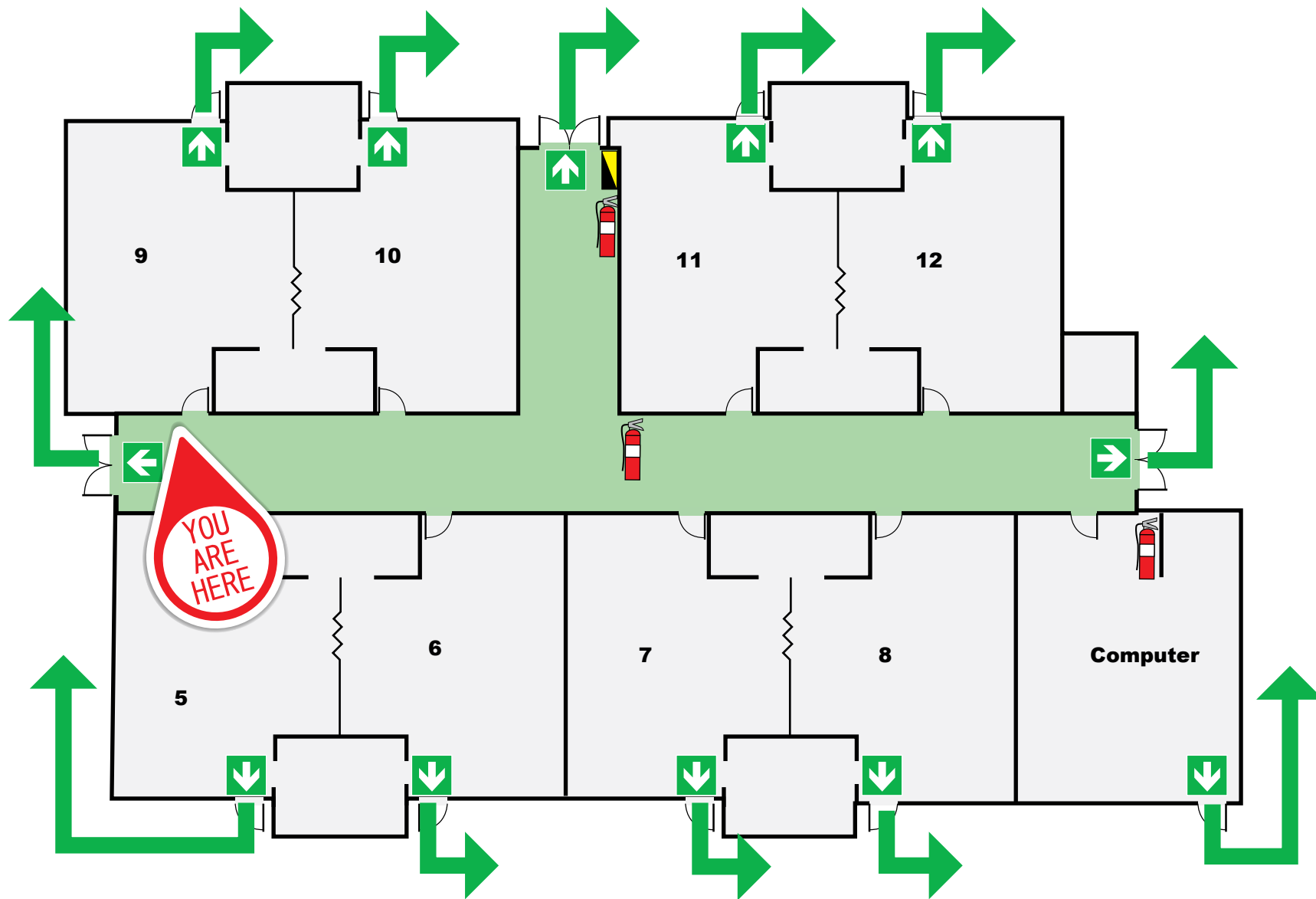
EVACUATION PROCEDURES



1. When the alert to Evacuate sounds, leave immediately by the nearest exit. Assist any person/s in immediate danger (if safe to do so).
2. Proceed in an orderly manner to Assembly Point.
3. Remain at assembly point until all occupants are accounted for. Do not leave until the all-clear is given.

EVACUATION DIAGRAM

BLOCK C

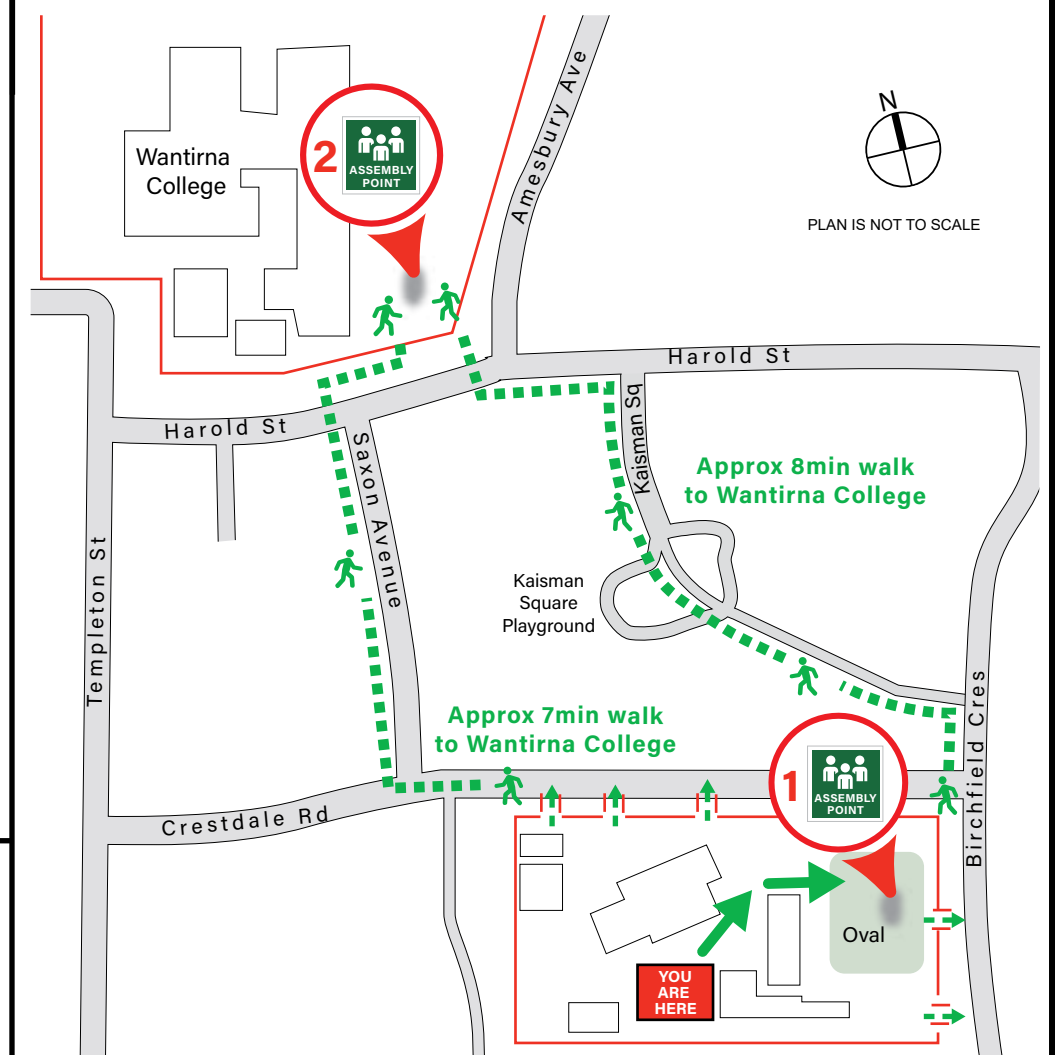


TEMPLETON
MELBOURNE, AUSTRALIA

TEMPLETON PRIMARY SCHOOL
1 CRESTDALE RD, WANTIRNA 3152

- 1 PRIMARY ASSEMBLY POINT** (On-site) - School Oval
- 2 SECONDARY ASSEMBLY POINT** (Off-site) - Wantirna College

ASSEMBLY AREAS



EVACUATION PROCEDURES



1. When the alert to Evacuate sounds, leave immediately by the nearest exit.
Assist any person/s in immediate danger (if safe to do so).
2. Proceed in an orderly manner to Assembly Point.
3. Remain at assembly point until all occupants are accounted for.
Do not leave until the all-clear is given.



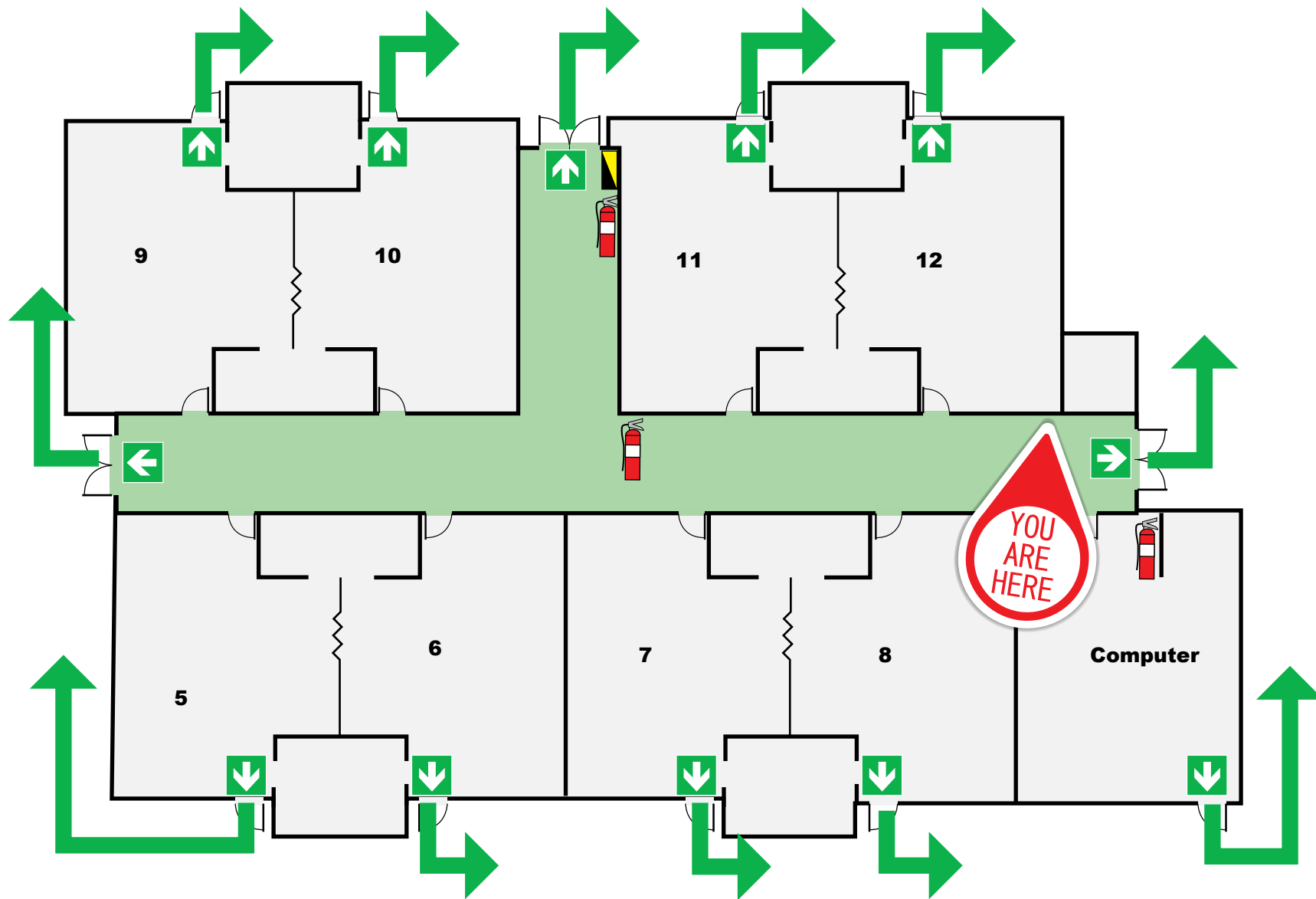
FIRE MARSHALL
FIRE PROTECTION CONSULTANTS
(03) 9775 0913
Date: FEB 2023
Valid until: FEB 2028

LEGEND

- Hose reel
- Dry Chemical Extinguisher
- First Aid Kit
- Emergency Exit
- Primary Route
- Alternate Route
- Assembly Area

EVACUATION DIAGRAM

BLOCK C

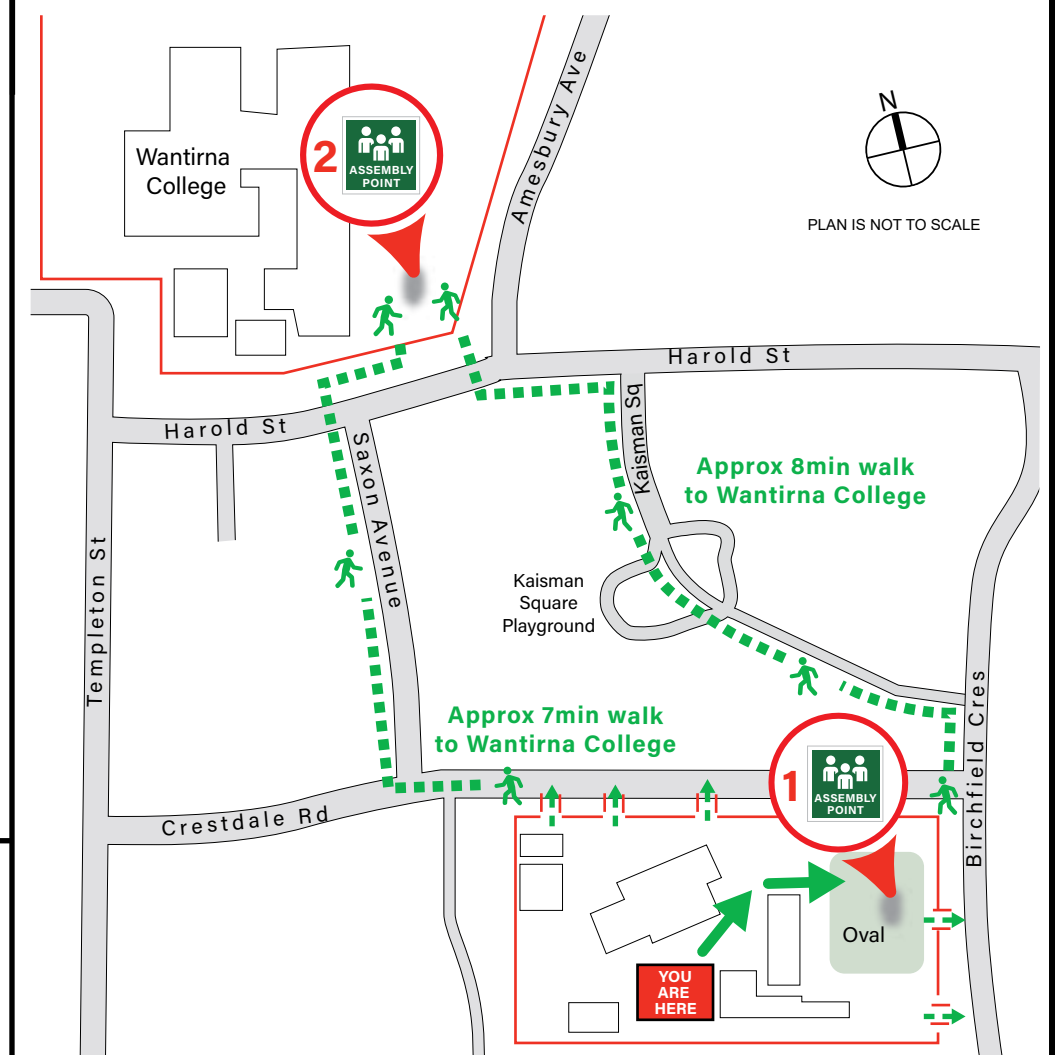


TEMPLETON
MELBOURNE, AUSTRALIA

TEMPLETON PRIMARY SCHOOL
1 CRESTDALE RD, WANTIRNA 3152

- 1 PRIMARY ASSEMBLY POINT** (On-site) - School Oval
- 2 SECONDARY ASSEMBLY POINT** (Off-site) - Wantirna College

ASSEMBLY AREAS



EVACUATION PROCEDURES



1. When the alert to Evacuate sounds, leave immediately by the nearest exit.
Assist any person/s in immediate danger (if safe to do so).
2. Proceed in an orderly manner to Assembly Point.
3. Remain at assembly point until all occupants are accounted for.
Do not leave until the all-clear is given.



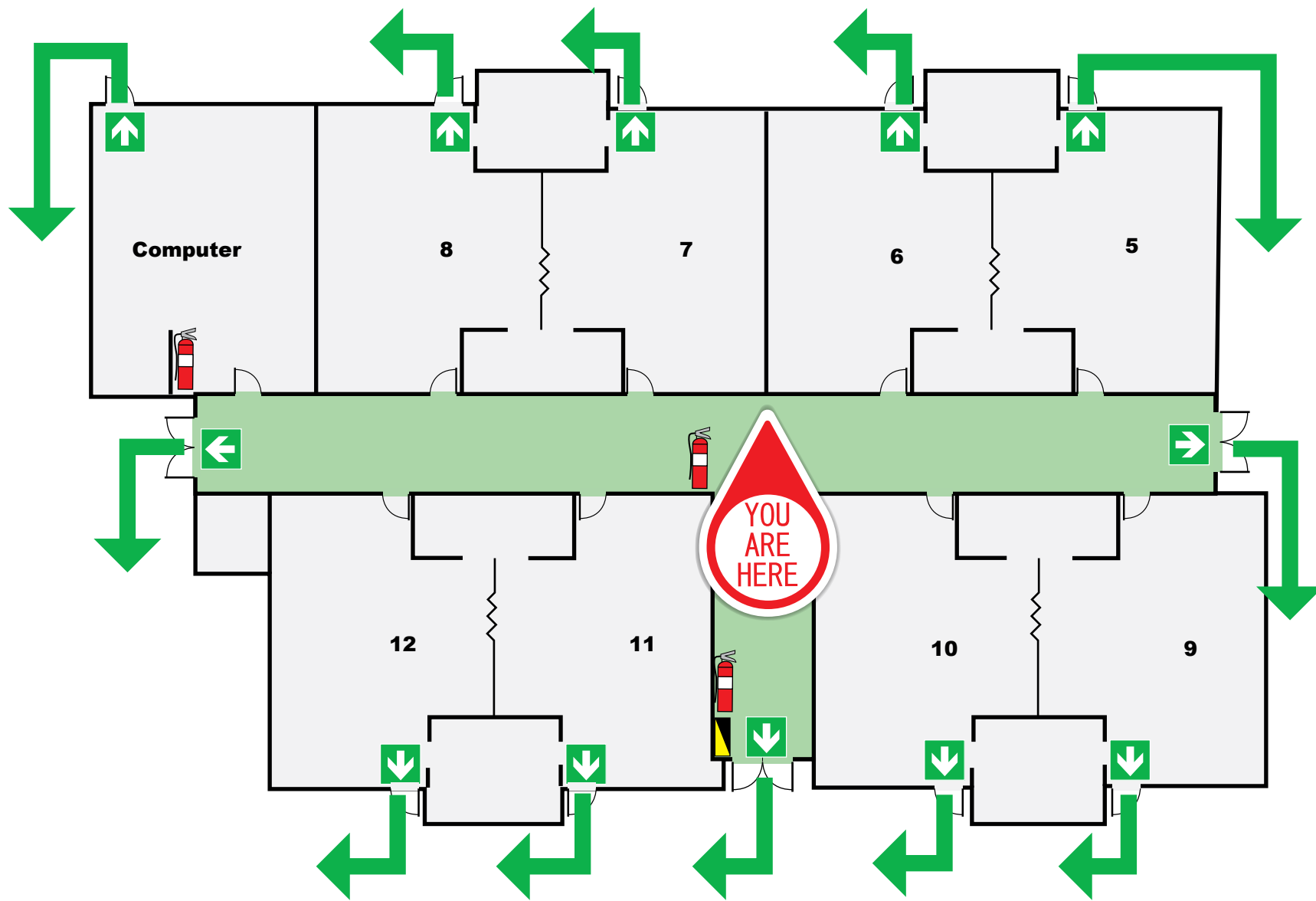
FIRE MARSHALL
FIRE PROTECTION CONSULTANTS
(03) 9775 0913
Date: FEB 2023
Valid until: FEB 2028

LEGEND

- Hose reel
- Dry Chemical Extinguisher
- First Aid Kit
- Emergency Exit
- Primary Route
- Alternate Route
- Assembly Area

EVACUATION DIAGRAM

BLOCK C

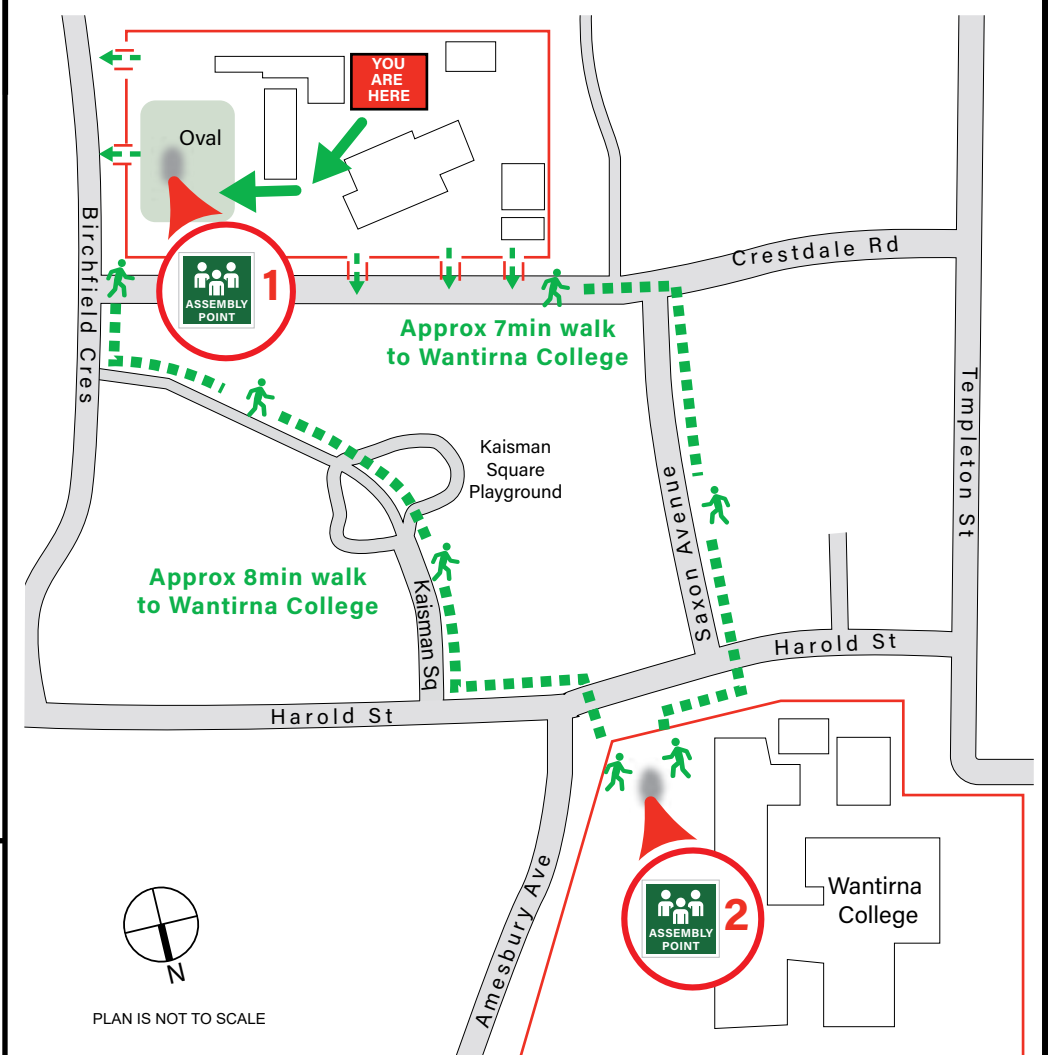


TEMPLETON
MELBOURNE, AUSTRALIA

TEMPLETON PRIMARY SCHOOL
1 CRESTDALE RD, WANTIRNA 3152

- 1** PRIMARY ASSEMBLY POINT (On-site) - School Oval
- 2** SECONDARY ASSEMBLY POINT (Off-site) - Wantirna College

ASSEMBLY AREAS



EVACUATION PROCEDURES



1. When the alert to Evacuate sounds, leave immediately by the nearest exit.
Assist any person/s in immediate danger (if safe to do so).
2. Proceed in an orderly manner to Assembly Point.
3. Remain at assembly point until all occupants are accounted for.
Do not leave until the all-clear is given.



FIRE MARSHALL
FIRE PROTECTION CONSULTANTS
(03) 9775 0913
Date: FEB 2023
Valid until: FEB 2028



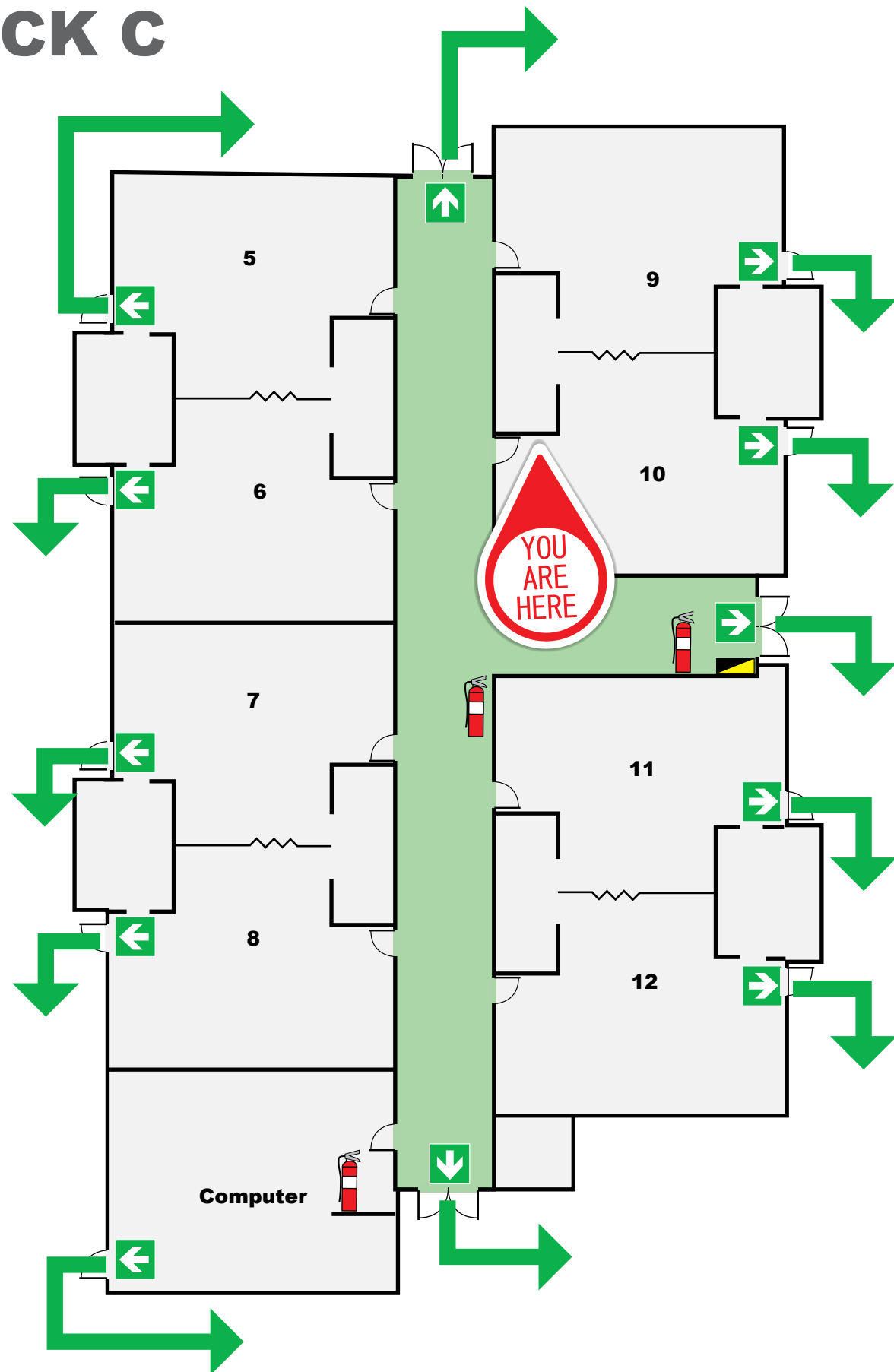
PLAN IS NOT TO SCALE

LEGEND

- Hose reel
- Dry Chemical Extinguisher
- First Aid Kit
- Emergency Exit
- Primary Route
- Alternate Route
- Assembly Area

EVACUATION DIAGRAM

BLOCK C



TEMPLETON

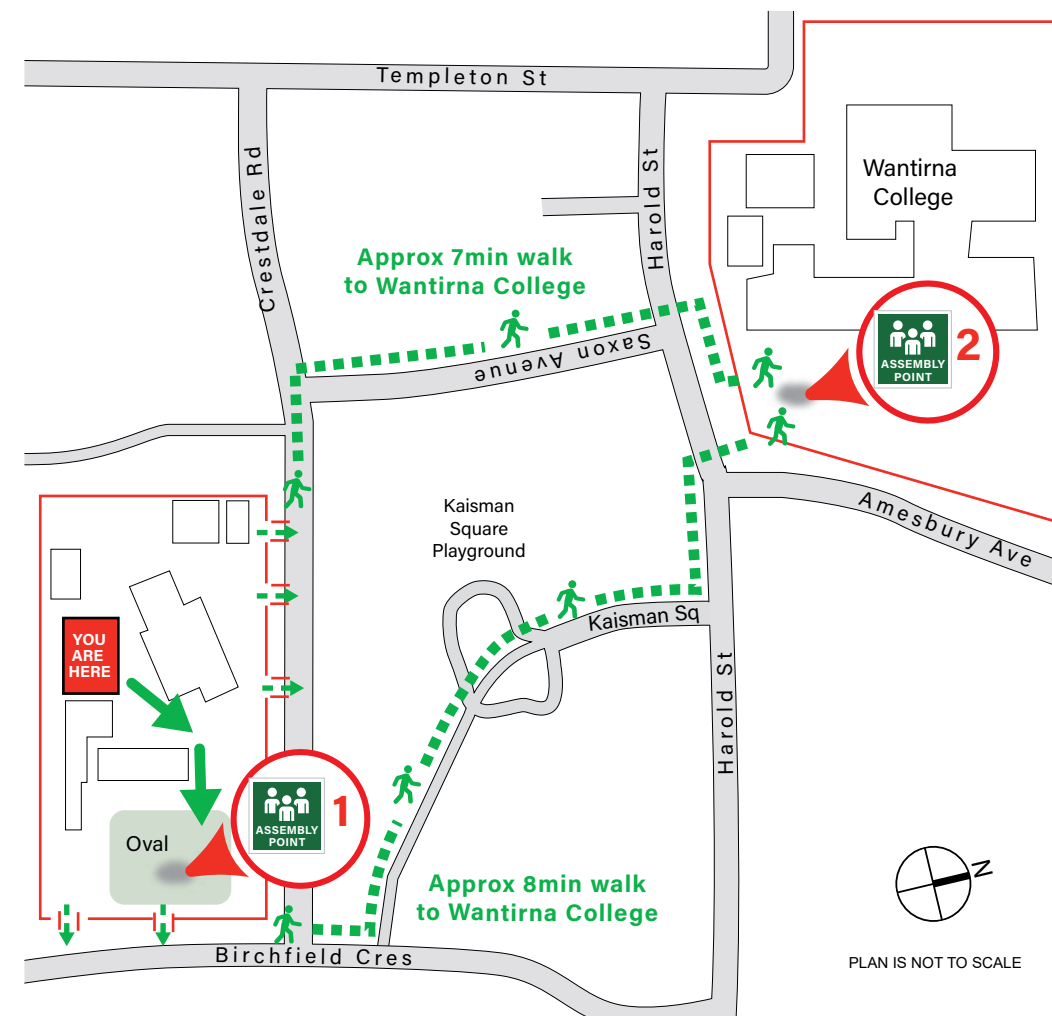
MELBOURNE, AUSTRALIA

TEMPLETON PRIMARY SCHOOL
1 CRESTDALE RD, WANTIRNA 3152

1 PRIMARY ASSEMBLY POINT
(On-site) - School Oval

2 SECONDARY ASSEMBLY POINT
(Off-site) - Wantirna College

ASSEMBLY AREAS



LEGEND

- Hose reel
- Dry Chemical Extinguisher
- First Aid Kit
- Emergency Exit
- Primary Route
- Alternate Route
- Assembly Area

FIRE MARSHALL
FIRE PROTECTION CONSULTANTS
(03) 9775 0913
Date: FEB 2023
Valid until: FEB 2028

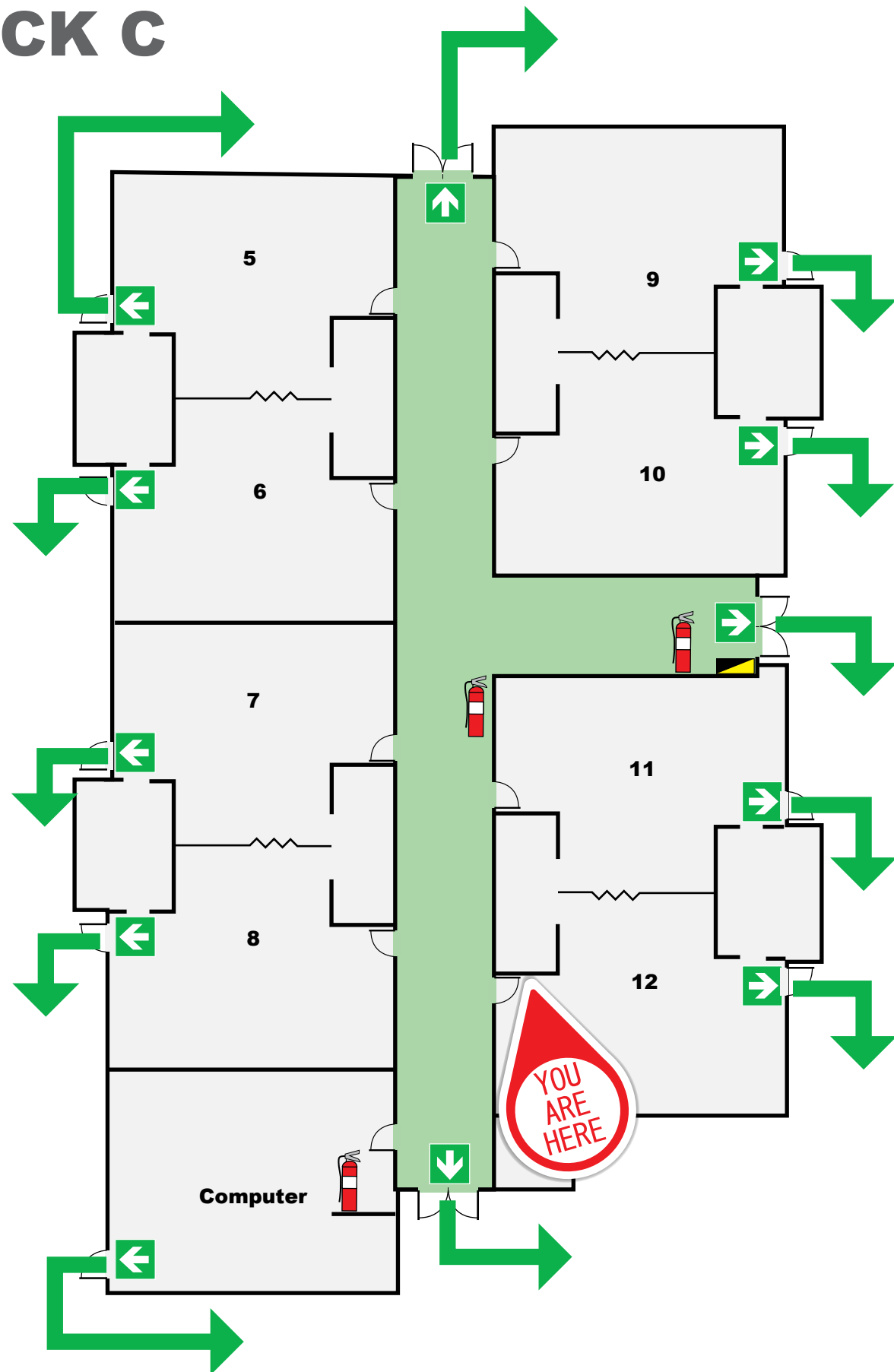
EVACUATION PROCEDURES



1. When the alert to Evacuate sounds, leave immediately by the nearest exit. Assist any person/s in immediate danger (if safe to do so).
2. Proceed in an orderly manner to Assembly Point.
3. Remain at assembly point until all occupants are accounted for. Do not leave until the all-clear is given.

EVACUATION DIAGRAM

BLOCK C



TEMPLETON

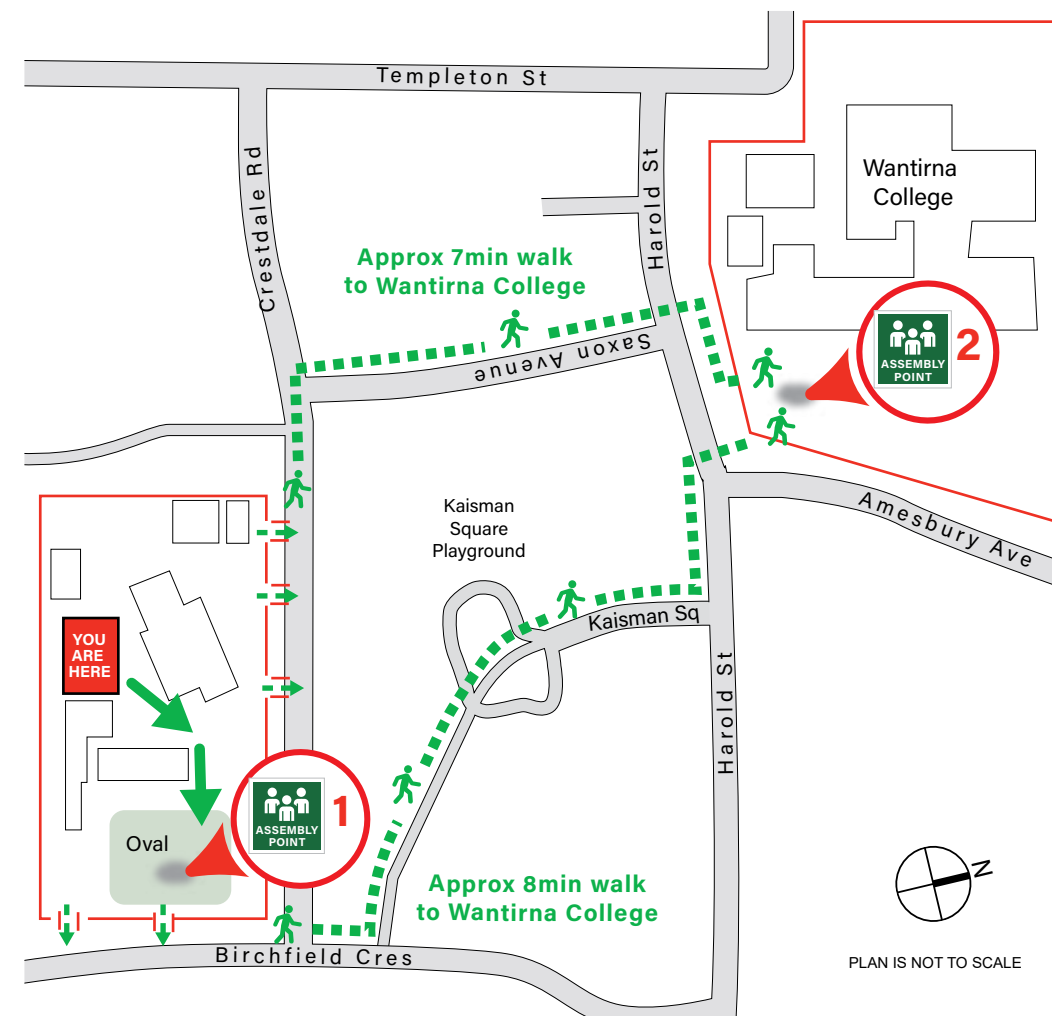
MELBOURNE, AUSTRALIA

TEMPLETON PRIMARY SCHOOL
1 CRESTDALE RD, WANTIRNA 3152

1 PRIMARY ASSEMBLY POINT
(On-site) - School Oval

2 SECONDARY ASSEMBLY POINT
(Off-site) - Wantirna College

ASSEMBLY AREAS



LEGEND

- Hose reel
- Dry Chemical Extinguisher
- First Aid Kit
- Emergency Exit
- Primary Route
- Alternate Route
- Assembly Area

FIRE MARSHALL
FIRE PROTECTION CONSULTANTS
(03) 9775 0913
Date: FEB 2023
Valid until: FEB 2028

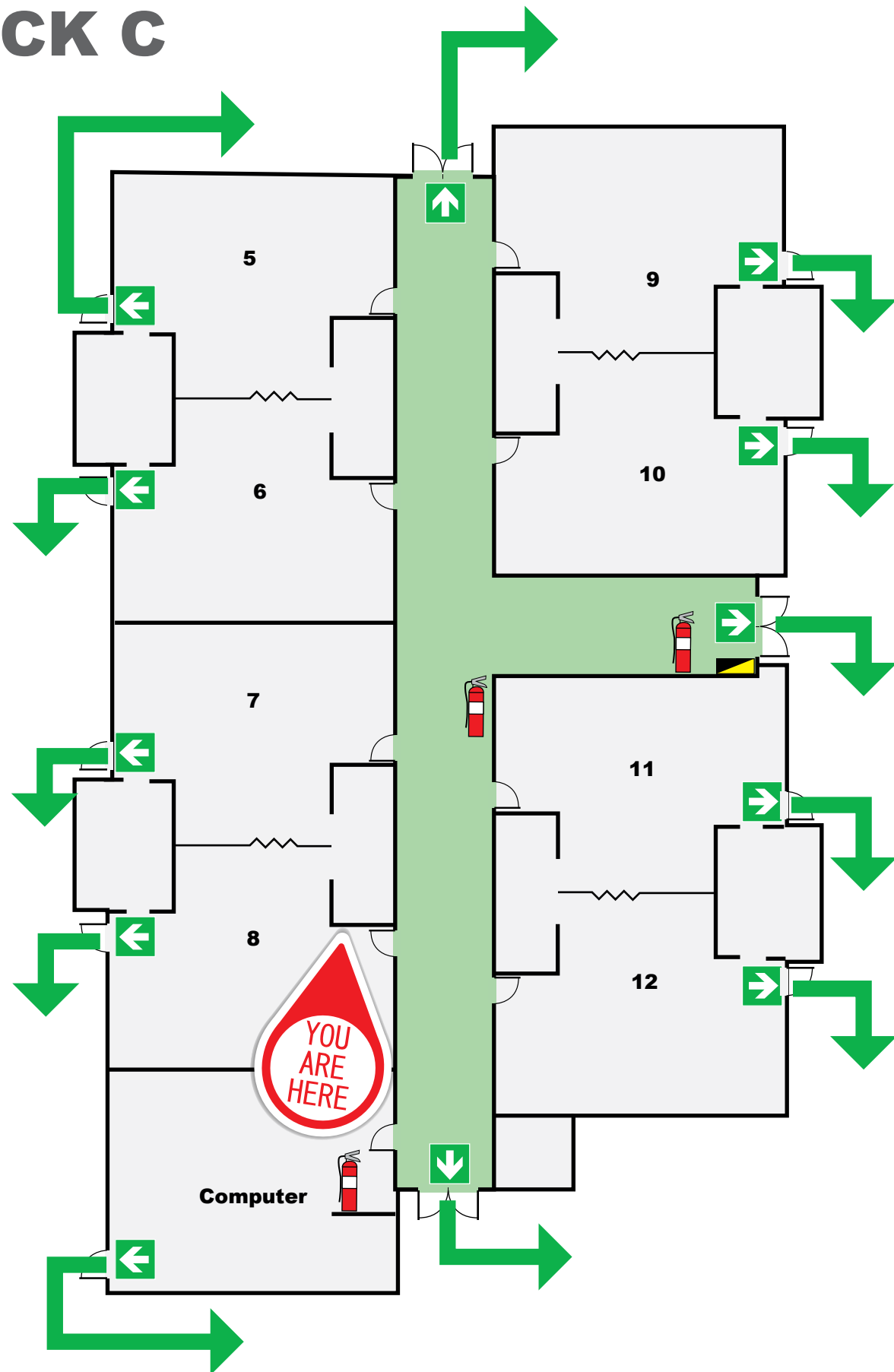
EVACUATION PROCEDURES



1. When the alert to Evacuate sounds, leave immediately by the nearest exit. Assist any person/s in immediate danger (if safe to do so).
2. Proceed in an orderly manner to Assembly Point.
3. Remain at assembly point until all occupants are accounted for. Do not leave until the all-clear is given.

EVACUATION DIAGRAM

BLOCK C



TEMPLETON

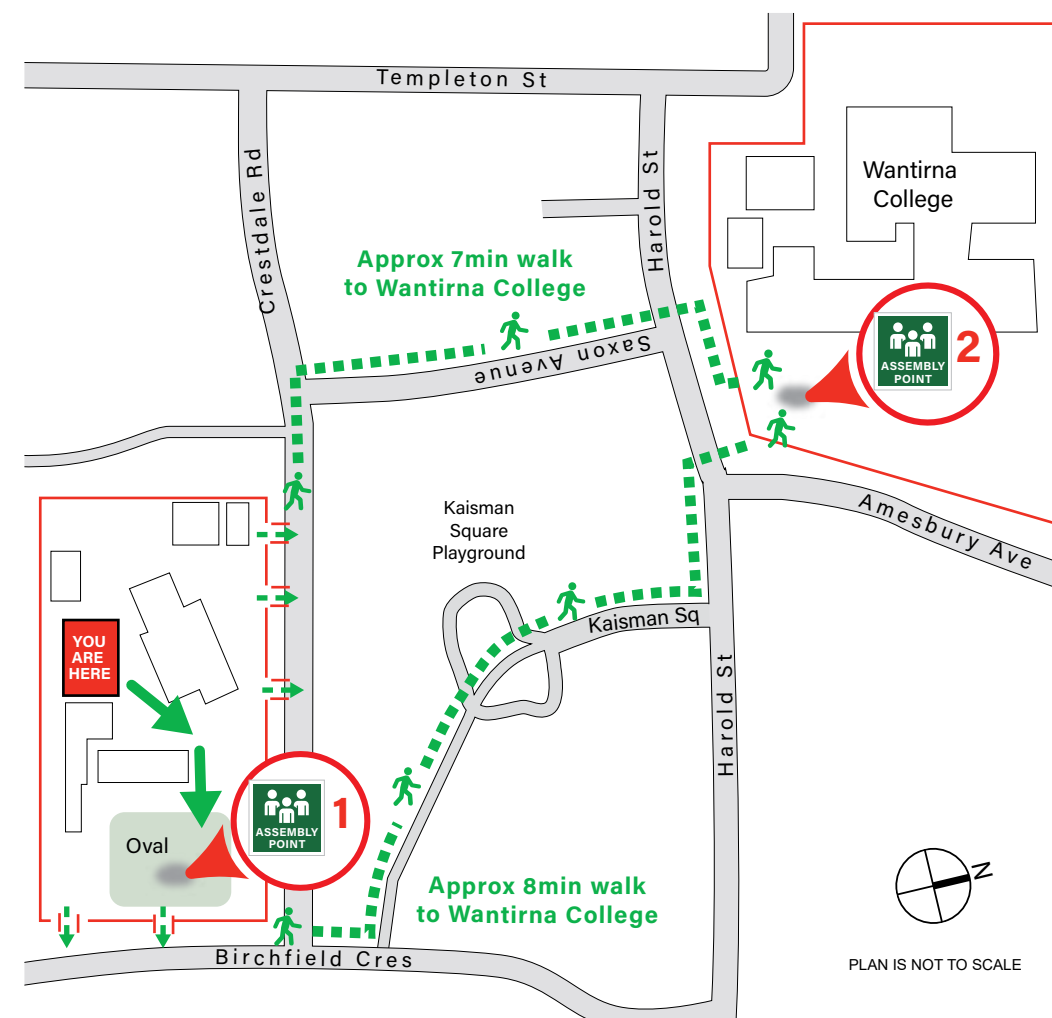
MELBOURNE, AUSTRALIA

TEMPLETON PRIMARY SCHOOL
1 CRESDALE RD, WANTIRNA 3152

1 PRIMARY ASSEMBLY POINT
(On-site) - School Oval

2 SECONDARY ASSEMBLY POINT
(Off-site) - Wantirna College

ASSEMBLY AREAS



LEGEND

- Hose reel
- Dry Chemical Extinguisher
- First Aid Kit
- Emergency Exit
- Primary Route
- Alternate Route
- Assembly Area

FIRE MARSHALL
FIRE PROTECTION CONSULTANTS
(03) 9775 0913
Date: FEB 2023
Valid until: FEB 2028

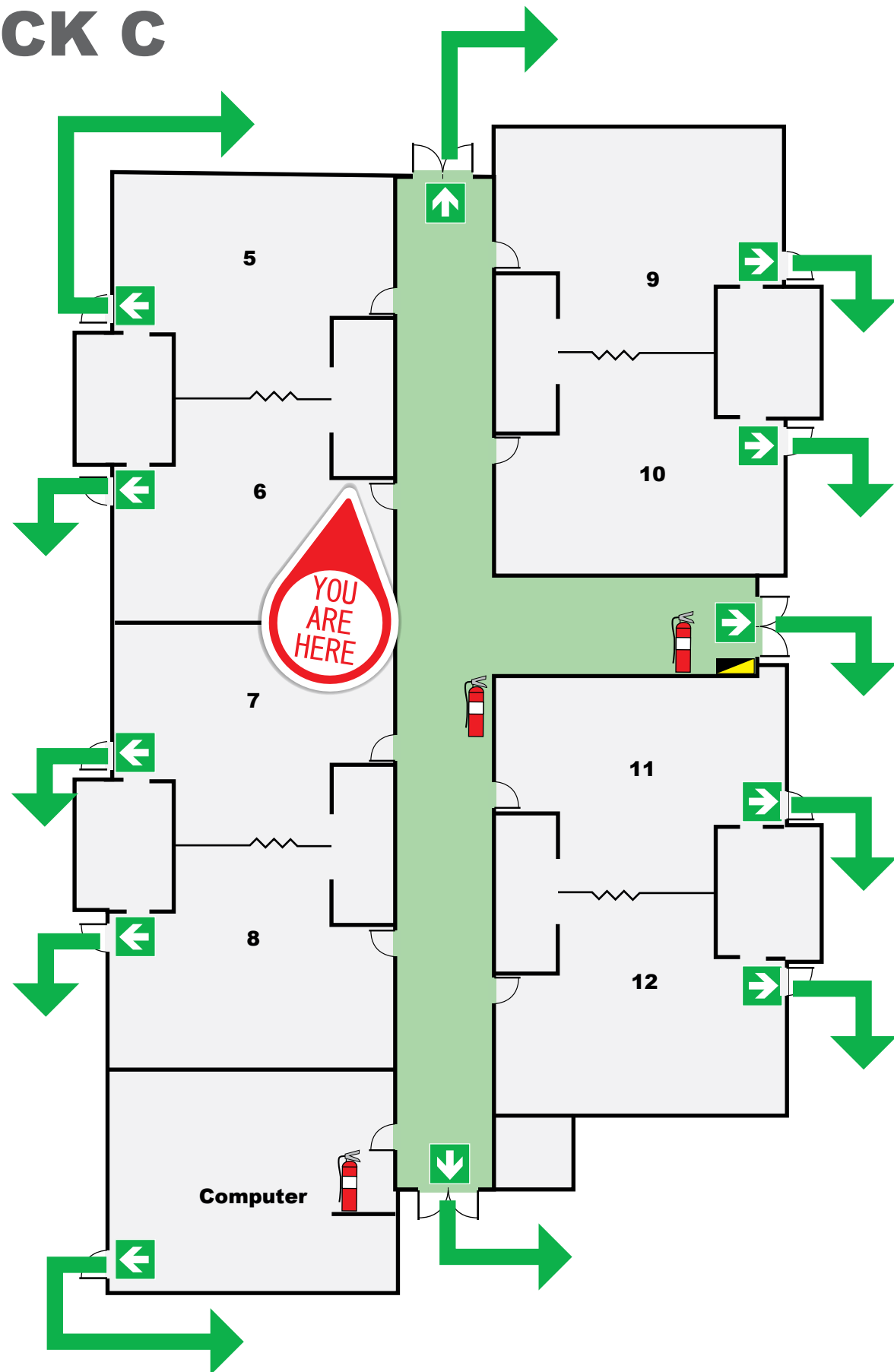
EVACUATION PROCEDURES



1. When the alert to Evacuate sounds, leave immediately by the nearest exit. Assist any person/s in immediate danger (if safe to do so).
2. Proceed in an orderly manner to Assembly Point.
3. Remain at assembly point until all occupants are accounted for. Do not leave until the all-clear is given.

EVACUATION DIAGRAM

BLOCK C



TEMPLETON

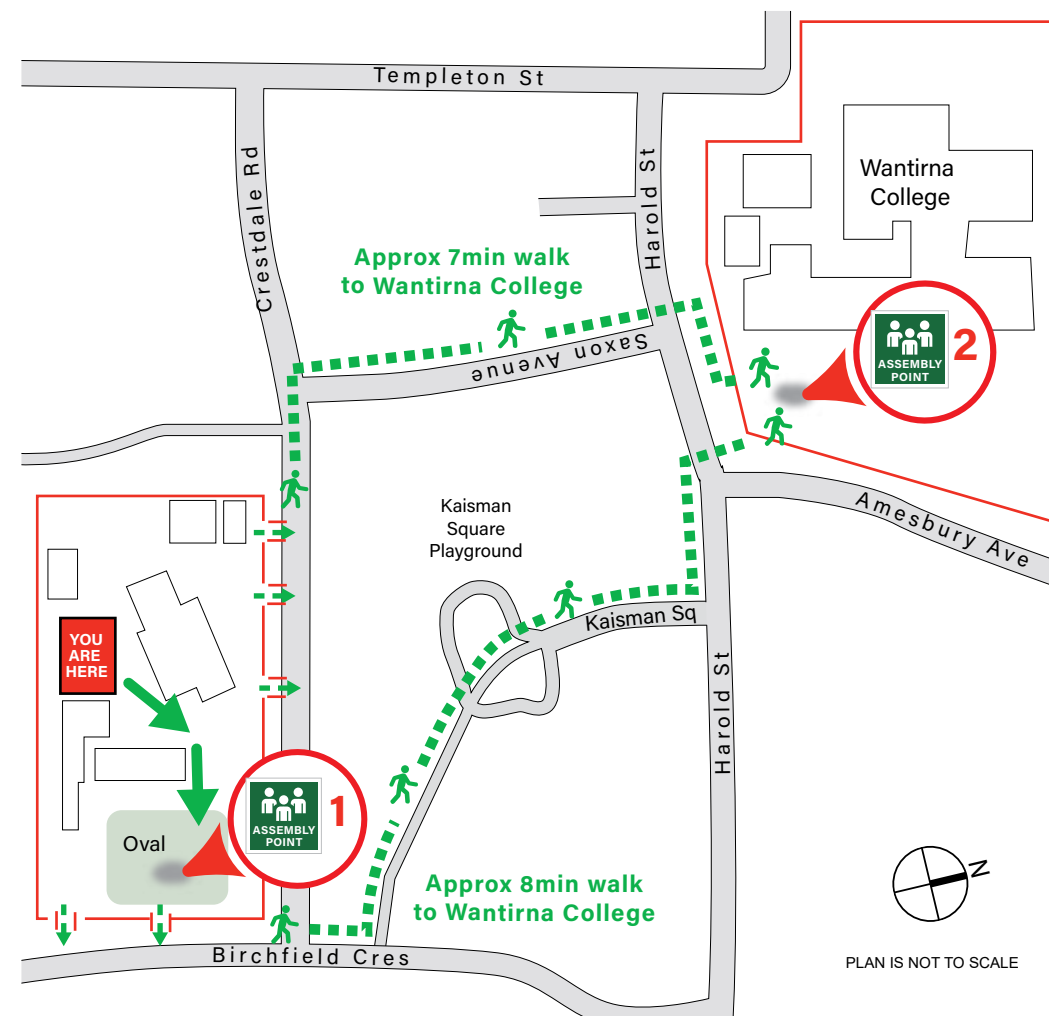
MELBOURNE, AUSTRALIA

TEMPLETON PRIMARY SCHOOL
1 CRESTDALE RD, WANTIRNA 3152

1 PRIMARY ASSEMBLY POINT
(On-site) - School Oval

2 SECONDARY ASSEMBLY POINT
(Off-site) - Wantirna College

ASSEMBLY AREAS



LEGEND

- Hose reel
- Dry Chemical Extinguisher
- First Aid Kit
- Emergency Exit
- Primary Route
- Alternate Route
- Assembly Area

FIRE MARSHALL
FIRE PROTECTION CONSULTANTS
(03) 9775 0913
Date: FEB 2023
Valid until: FEB 2028

EVACUATION PROCEDURES



1. When the alert to Evacuate sounds, leave immediately by the nearest exit. Assist any person/s in immediate danger (if safe to do so).
2. Proceed in an orderly manner to Assembly Point.
3. Remain at assembly point until all occupants are accounted for. Do not leave until the all-clear is given.